

Release Notes v3.0.0

New Features

General

- *Sametime Chat Simulation Sensor*: A new End-to-End Sensor has been added which allows simulating an entire Sametime chat between two Users. This sensor measures:
 - the time during login
 - the retrieval time of the buddylist
 - the IM transfer time

This sensor can be used for an on-prem Sametime Environment [and/or for IBM Connections Cloud](#)

Enabled ☒

[Show Scheduler](#)

Settings

Targets

Actions

Schedule

First User

Username *

Password *

☐ Get Contact List

Second User

Username *

Password *

	Key	Value
★	greenlight.sametime.community.message.send.time	130
★	greenlight.sametime.community.server.login.time	294
★	greenlight.sametime.community.server.logout.time	1

- *Sametime Meeting Simulation Sensor*: A new End-to-End Sensor has been added which allows simulating an entire Sametime Meeting between two Users. This sensor measures:
 - Login time of both Users
 - Room create, join , leave and delete time
 - Upload time of a document (incl. adding and conversion time)
 - Sharing time of the uploaded document to the second use

Enabled ☒
[Show Schedu](#)

Settings

Targets

Actions

Schedule

Protocol

https ▼

Port

9446

File Size *

1 MB ▼

First User

Username *

User1 Meeting

Password *

Second User

Username *

User2 Meeting

Password *

★	Key	Value
★	greenlight.sametime.meeting.doc.share.time	207
★	greenlight.sametime.meeting.doc.upload.1mb.added	29
★	greenlight.sametime.meeting.doc.upload.1mb.conver	30.380
★	greenlight.sametime.meeting.doc.upload.1mb.time	30.492
★	greenlight.sametime.meeting.doc.upload.delete.time	364
★	greenlight.sametime.meeting.room.create.time	29
★	greenlight.sametime.meeting.room.delete.time	33
★	greenlight.sametime.meeting.room.join.time	7
★	greenlight.sametime.meeting.room.leave.time	42
★	greenlight.sametime.meeting.server.access.time	56
★	greenlight.sametime.meeting.server.login.time	50
★	greenlight.sametime.meeting.server.logout.time	4

- *Sametime MultiSite Simulation Sensor*: A new End-to-End Sensor has been added which allows simulating an entire Sametime Meeting between multiple Users across different geographical locations. This very unique sensor delivers vital information about Meeting performance for users which are sitting in a decentral location where network connectivity plays an important role of a Sametime Meeting.

Settings

Targets

Actions

Schedule

Basic Settings

Room Name

Multi-Room

Protocol

https

Port

9446

File Size *

1 MB

First User

Username *

User1@panagenda.com

Password *

Alias *

Germany

Master

☒

Participants Settings

Settings

Targets

Actions

Schedule

Basic Settings

Participants Settings

Username	Alias
User2@panagenda.com	Boston
User3@panagenda.com	Austria

Double-click to remove entry

Add participant

Username *

Alias

< add participant

- Windows Services Sensor:** A new Sensor has been added which monitors Windows Services on the Operating System Level. If a monitored Service is not running, GreenLight can trigger a restart action too. Please check out the requirements before you can use this Sensor. [Requirements](#)

Basic ConfigurationServicesPerformance Counter

Services last refreshed on: 07.03.2016 16:32

load services ...

Available Items

Filter ...

Service Name	Shortname
Base Filtering Engine	BFE
CNG Key Isolation	KeyIso
COM+ Event System	EventSystem
COM+ System Application	COMSysApp
Certificate Propagation	CertPropSvc
Claims to Windows Token Ser	c2wts
Computer Browser	Browser
Credential Manager	VaultSvc
Cryptographic Services	CryptSvc

Selected Items

Filter ...

Service Name	
DHCP Client	DI
Netlogon	Ni
Windows Firewall	Mf

- Performance Counter Sensor:** A new Sensor has been added which allows you to monitor any of the available performance counters of a Windows System. One can select an entire Counter Set or individual Counters.
Please check out the requirements before you can use this Sensor [Requirements](#)

Basic ConfigurationServicesPerformance Counter

Performance Counter list last refreshed on: 07.03.2016 16:33

load Counter ...

Available Items

Filter ...

Counter Set	Path
► .NET CLR Data	.NET CLR Data
► .NET CLR Exceptions	.NET CLR Exceptions
► .NET CLR Interop	.NET CLR Interop

28 items selected

Filter ...

Counter Set	
► Process	Process

- Exchange Connectivity Sensor:** A new Sensor has been added to perform individual connectivity tests against Microsoft Exchange 2010/2013. This Sensor actively tests specific *Exchange* functionalities using build-in *Exchange* cmdlets via remote PowerShell.
Please check out the requirements before you can use this Sensor [Requirements](#)

The following connectivity Tests are performed

Mapi-, ReplicationHealth-, Pop-, Imap-, Owa-, ActiveSync- and OutlookConnectivity

Key	Value
greenlight.mxsconnectivity.failed_count	1
greenlight.mxsconnectivity.failed_tests	OWA
greenlight.mxsconnectivity.successful_count	6
greenlight.mxsconnectivity.successful_tests	POP,Replication Health,MAPI,I
greenlight.mxsconnectivity.total_count	7
greenlight.mxsconnectivity.type.as.latency	353
greenlight.mxsconnectivity.type.as.scenario.first_sync.connection_type	Plaintext
greenlight.mxsconnectivity.type.as.scenario.first_sync.error_msg	
greenlight.mxsconnectivity.type.as.scenario.first_sync.latency	46
greenlight.mxsconnectivity.type.as.scenario.first_sync.port	0

- **Exchange Health Sensor:** A new Sensor has been added to perform individual Role checks against Microsoft Exchange 2010/2013. This sensor checks based on the Role a Exchange Server has (e.g. CAS Role...) if the underlying Services are up and running. Please check out the requirements before you can use this Sensor [Requirements](#)

Key	Value
greenlight.mxshealth.role.hub_transport_server_role.services_total_count	8
greenlight.mxshealth.role.mailbox_server_role.required_services_running	1
greenlight.mxshealth.role.mailbox_server_role.services_not_running	
greenlight.mxshealth.role.mailbox_server_role.services_not_running_count	0
greenlight.mxshealth.role.mailbox_server_role.services_running	IISAdmin,MS
greenlight.mxshealth.role.mailbox_server_role.services_running_count	14
greenlight.mxshealth.role.mailbox_server_role.services_total_count	14
greenlight.mxshealth.role.unified_messaging_server_role.required_services_running	1
greenlight.mxshealth.role.unified_messaging_server_role.services_not_running	
greenlight.mxshealth.role.unified_messaging_server_role.services_not_running_count	0
greenlight.mxshealth.role.unified_messaging_server_role.services_running	IISAdmin,MS
greenlight.mxshealth.role.unified_messaging_server_role.services_running_count	6

- **Actions:** Individual Action Labels can now be assigned to any type of Action. In addition to that the Action UI was redesigned to make it more user friendly.

Sensor Action Settings

SMTP Mail [result.status >= 400]
Step 1 of 3: Alert Condition

Name

Conditions Advanced Options Timeframe Options

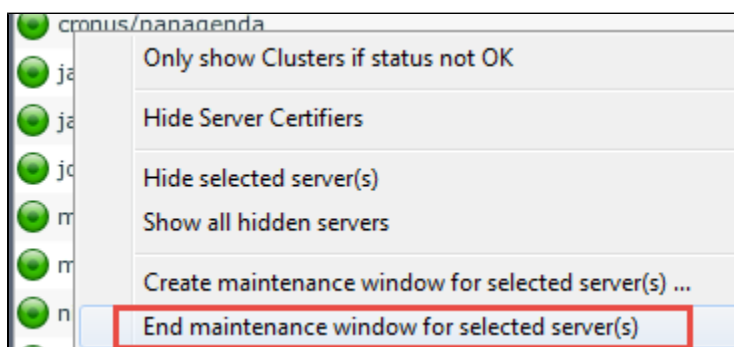
Live Monitor

- Health Grid:** All types of Servers can now appear on the Health Grid depending if a statistical key from a sensor is mapped to the Health Grid. (e.g PerfCounter Information)

Server	TRAVELER		PerfCounters	Login today	
	Name	Users	Devices	data bytes/sec	Login Activities
10.10.50.20				21.712,1	
connections.panagenda.com					3
jadin/traveler/panagenda		34	58		3

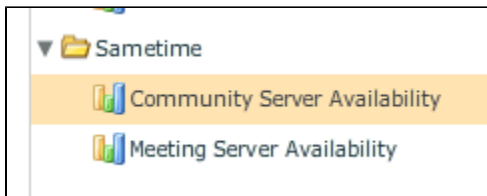
- Health Grid:** One can summarize multiple statistical columns into a single one on the Health Grid Level. This allows an administrator to have as much information as possible available.
- Health Grid:** A Static maintenance Window can now be stopped via Health Grid. So whenever you set a server (or multiple servers) in a static maintenance mode you can stop the maintenance on-demand without the need of opening the individual Node Settings. This Saves a lot of time.

FYI: If the Server runs a periodic maintenance then this can not be stopped via this functionality!



Reporting

- Sametime:** Additional Reports for Sametime Meeting and Sametime Chat are available



Alerting

- *Actions:* All new Sametime Sensors are providing a lot of new Keys which can be used for Action conditions
- *Actions:* The DB Access Sensor provides new Action Conditions

Communication Profiles

- *Authentication Profile:* A new Profile called "Authentication Profile" has been added. This Profile is used for authentication against Windows Platforms (e.g. Used for Exchange Sensors).

Authentication Profile

Username *

Administrator

Password *

Protocol

http ▼

Port

5985

Test Settings

Hostname

Connection Type

MS Exchange ▼

Auth. Method

Kerberos ▼

Connect

- *Mail Profile:* The Mail Profile has now the option to sync Group members of a Domino Group into a Mail Profile. **Note:** Please make sure that Group members of the selected Group(s) are based on internet mail addresses!

Monitoring Configuration
Communication Settings

Mail Profile

SMTP Mail Gateway * mailgateway.panagenda.com

(Optional) SMTP Login

(Optional) SMTP Password

From * greenlight.bot@panagenda.com

Select groups

☒

Filter

intranet.panagenda.com (intranet.p...
jadin.panagenda.com (jadin.panage...
jadin/traveler/panagenda (jadin.pan...
☒ jalen/tokra (jalen.panagenda.com)
jolinar/panagenda (jolinar.panagend...
jolinar/tokra (jolinar.panagenda.com)
Jump/Gambol (jump.ProcessStream...

Filter

fwalder-testusers
homeserver-test
local-testusers
☒ LocalDomainAdmins
LocalDomainServers
nonlocal-testusers
OtherDomainServers

Improvements

General

- *Node Settings*: Node Settings have been redesigned in order to cover different Server types.

Host Name / IP * kanan.panagenda.com

Operating System Windows

☒ OS Services and Statistics
☒ Domino Server
☐ MS Exchange Server

- *Event Log*: The EventLog has been redesigned. Sensor name, Action Label , Action Type, Sensor ID, etc has been added to have a much better overview about triggered actions

Timestamp	Sensor...	Sensor name	Action Label	Action Type	Action Short I
Tue, 08. Mar 2016 14:26:14	394	HTML Access	SysLog to HP OpenView	Syslog	Syslog Message Se
Tue, 08. Mar 2016 14:26:14	394	HTML Access	Trap to IP 10.0.21.57	SNMPTrap	SNMP Notification
Tue, 08. Mar 2016 14:26:14	394	HTML Access	Mail to Operators	SMTPMail	Short message ...

- *Domino DB Access Sensor*: Added additional pre-defined action Conditions
- *Traveler User Simulation Sensor*: Added Total amount of Devices as a statistical output (greenlight.traveler.devices.total)
- *Traveler User Simulation Sensor*: Added URL information to "Invalid Json object" message in the greenlight.log
- *Clone Server Configuration*: Improved the way and speed of cloning the Server configuration
- *HTML User Simulation Sensor*: This sensor was redesigned. For Form authentication additional fields are available in which one can adjust the name of username and password fields so that it matches the individual Login form. In addition to that a RegEx string can be used to parse the html website

Settings

Targets

Actions

Schedule

Authentication Method * Form Authentication ▼

Protocol * https ▼

Port * 443

Timeout * 1000 ms

Check URL /traveler?action=getStatus

RegExp. IBM Traveler server is not available

Username * Stefan Fried

Password * *****

Username Fi...

Password Field

Authenticati... /names.nsf?

- *Maintenance Windows*: A CRON definition can now be assigned as a periodic maintenance window to each of the available nodes. This gives the flexibility to set for instance a bi-weekly or monthly maintenance window for your servers.
IMPORTANT: the Cron definition has to cover a certain timeframe !

Configure Time Period

Configure Time Period

Step 1 of 1: Periodic Time Frame

Validity: Always ▼

Valid From: Wed, 30. Mar 2016 9 5

Valid Until: Wed, 30. Mar 2016 9 5

Time Zone: (UTC+01:00) Africa/Algiers [Central European Time]

Basic Weekday Settings **Advanced Settings**

Cron Definition: ** * 01-02 1,15 * ? *

Generate a valid cron definition here: www.cronmaker.com

< Back Finish

- *Domino Audit*: "Resource RAM" Audit is not performed any longer if the underlying host is based on Linux/Unix
- *Backend Database*: Improved maintenance Tasks for the back-end relational Database

Reporting

- *Improved performance for creating Reports*: new SQL statements are in place which speeds up the Reporting create performance by about ~25%

Charting

- *Improve performance for creating Charts*: new SQL statements are in place which speeds up the Charting performance by about ~25%

Live Monitor

- *Maintenance Windows*: The button "Create maintenance window for selected server(s)..." is now hidden for "normal users"

Bug Fixes

General

- *Blackberry Dashboard*: Fixed an issue within threshold settings
- *Blackberry Dashboard*: Fixed an issue within action conditions
- *General*: Fixed an issue where an already logged in user name was not shown correctly in a login message box
- *General*: Fixed an issue in an Action of the Linux Shell Script Sensor where a wrong predefined condition was select-able
- *General*: Fixed an tooltip issue for action
- *General*: Fixed an Sametime Statistics retrieval issue.
- *General*: Fixed an Issue where a second Discovery Run removed server properties from existing servers

- Domino DB Access Sensor: Fixed an issue where `greenlight.dbaccess.database.view.entry_count` was not available in previous releases
- Clone Server Configuration: Fixed an issue where DB Access Sensor was disconnected from historical Dataset
- General: Fixed an issue where the OnlineUpdate was not working for v2.9.6