

Getting Started with OfficeExpert TrueDEM

- [Step 1: Microsoft Entra ID App Consents](#)
 - [App1: OfficeExpert TrueDEM API](#)
 - [App2: OfficeExpert TrueDEM Agent](#)
 - [App3: OfficeExpert TrueDEM Calls and Health](#)
- [Step 2: Portal Application](#)
- [Step 3: OfficeExpert TrueDEM Manager Roll-Out](#)

You are just a few clicks away from using OfficeExpert TrueDEM. Please make sure to follow the instructions below.

Step 1: Microsoft Entra ID App Consents

Before using OfficeExpert TrueDEM, you must add Microsoft Entra ID Enterprise applications and give admin consent.

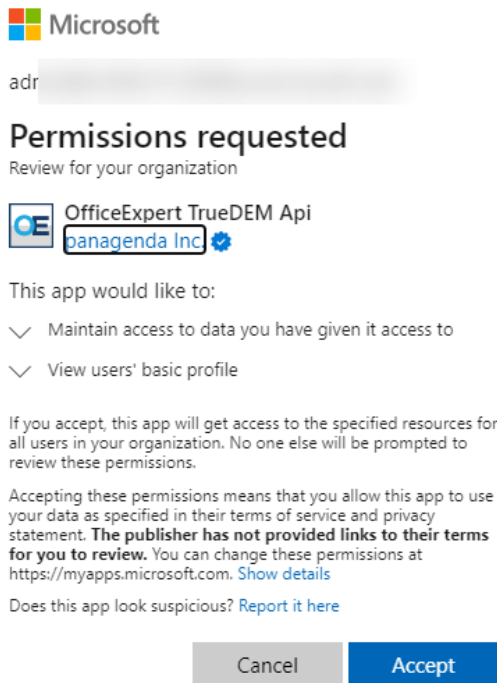
App1: OfficeExpert TrueDEM API

The first application is an App for API access between our Services. It contain only two default [Delegated permissions](#).

To add it, please click the following Link and give admin consent:

[Link >> OfficeExpert TrueDEM API - App](#)

The following dialog is displayed:



Click on **Accept** to add the OfficeExpert TrueDEM API - App to your Microsoft Entra ID.

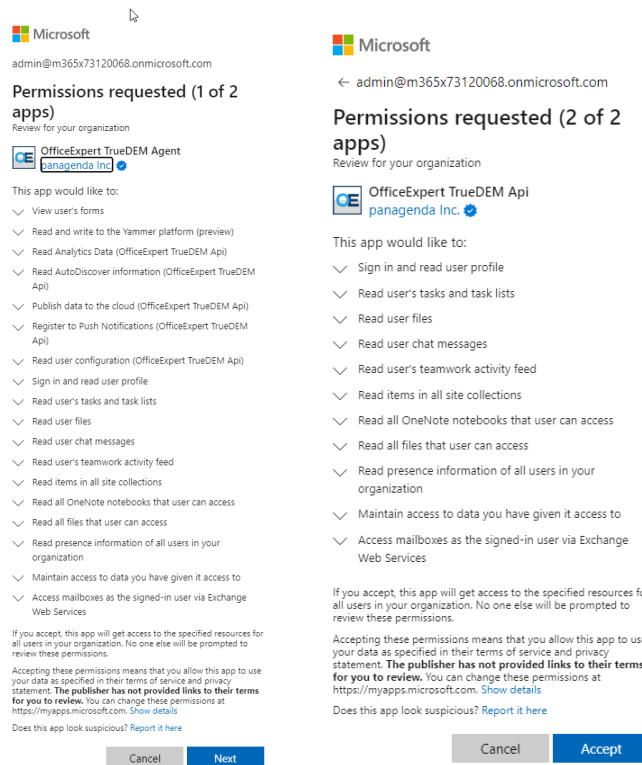
App2: OfficeExpert TrueDEM Agent

The second application is the Core app used by our Store App. It contain only [Delegated permissions](#).

To add it, please click the following Link:

[Link >> OfficeExpert TrueDEM Agent - App](#)

The following two dialogs are displayed:



Click on **Accept** to add the OfficeExpert TrueDEM Agent - App to your Microsoft Entra ID.



The second Dialog page is a re-confirmation since the TrueDEM Agent app is calling the other TrueDEM API app and one need to confirm the graph permissions again.

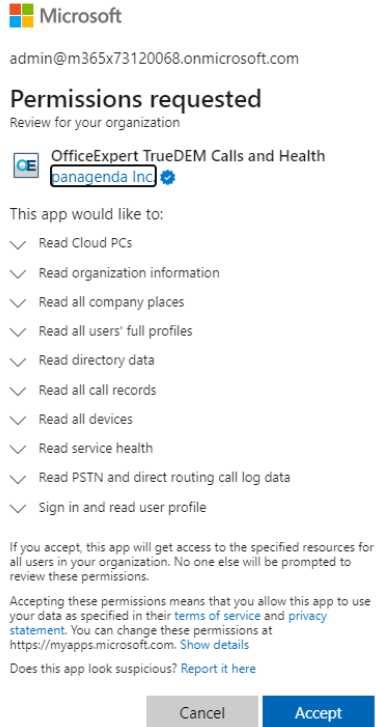
App3: OfficeExpert TrueDEM Calls and Health

This application is used in our Cloud Service and retrieves for instance call record data from your tenant using the official Call Records API. It contain several [Application permissions](#).

To add this application, please access the following Link:

[Link >> OfficeExpert TrueDEM Calls and Health - Consent Link](#)

The following dialog is displayed:

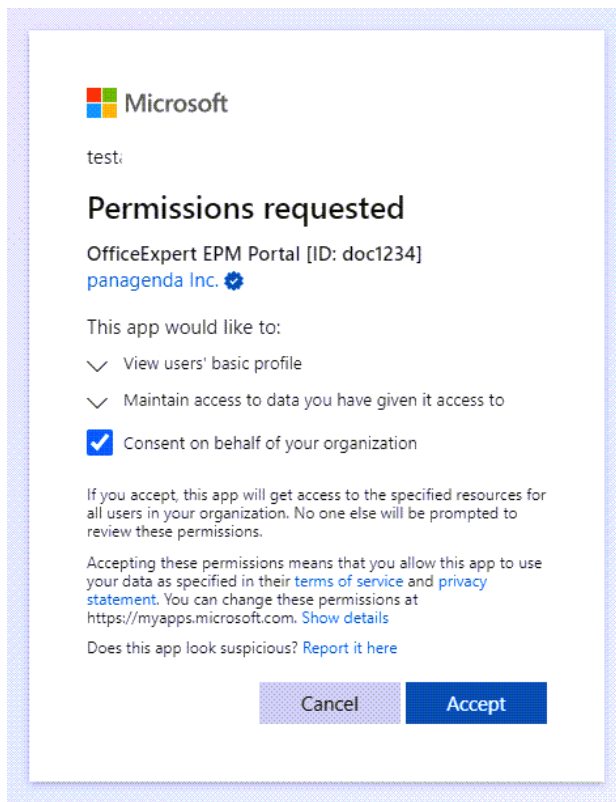


Click on **Accept** to add the OfficeExpert TrueDEM Calls and Health - App to your Microsoft Entra ID.

Step 2: Portal Application

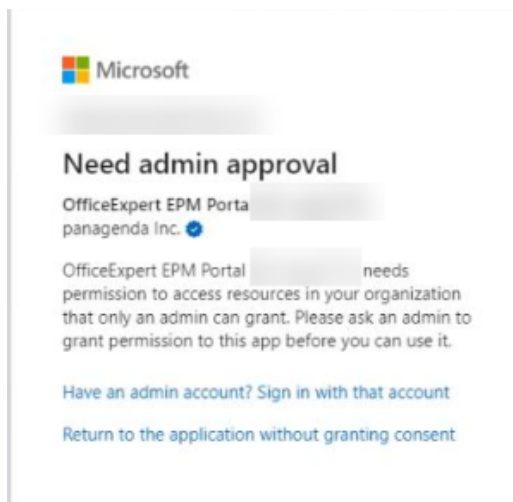
As soon as the panagenda internal provisioning process is complete, you will receive details about your unique OfficeExpert TrueDEM Portal URL. With this URL you are going to add another Microsoft Entra ID Enterprise Application.

Accept the request "*on behalf of your organization*" by ticking the corresponding checkbox:



The OfficeExpert TrueDEM Portal application will appear as an **Enterprise App** in your Microsoft Entra ID Tenant. You can adjust the user accesses accordingly in your Azure portal, see [True DEM Portal - Restrict Access](#) for further details.

Note: if you try to access the Portal App as a normal user the first time (instead of a global admin) you likely get the following message:



This message is displayed due to security restrictions you have in place in your Azure tenant, in which users are not allowed to register any applications.

Step 3: OfficeExpert TrueDEM Manager Roll-Out

While the SaaS on-boarding process is in progress, you can already begin rolling out the OfficeExpert TrueDEM Manager in your organization. To do so, proceed as follows:

1. Please make sure you follow the following Client Requirements: [Client Requirements for OfficeExpert TrueDEM](#)
2. The download link to the panagenda OfficeExpert TrueDEM Manager and the Install Guide will be directly send to you by our team.
3. Integrate and deploy the Installer with Intune, SCCM, or any other Software Deployment Tool. See a link how a Intune/Endpoint Manager Integration look like: [Integrate with Endpoint Manager](#)
4. As stated in the Install Guide, a restart of the client is needed in order to activate the TrueDEM Agent on the local Device



Please make sure tha Step 1 from above is done before you install and deploy the TrueDEM Manaegr to your devices!



What are the names of the processes running on the computers after the installation?

The OfficeExpert TrueDEM client consists of two different parts

a) OfficeExpert TrueDEM Store App (*Background => PerfraxAgent.exe; Foreground => PerfraxAgent.Exec.Net.exe*)

b) OfficeExpert TrueDEM Manager

Now, everything is ready to proactively monitor and analyze your end points with OfficeExpert TrueDEM. For further information, please have a look at the [TrueDEM articles in the panagenda knowledge base](#).