



Setup Guide - AlmaLinux GreenLight

⚠ Please note that this is an automated export from the panagenda Knowledge Base which may have minor issues in formatting or graphics.

Contact

E-Mail Support: support@panagenda.com

E-Mail Sales: sales@panagenda.com

Web: www.panagenda.com

Table of Contents

Contact	2
Welcome to panagenda GreenLight!	5
Server System Requirements	6
Hardware	6
Software	6
Client System Requirements	7
Operating System and Software Requirements:	7
Browser Security and Network Access:	8
GreenLight Appliance Details	8
The panagenda GreenLight Virtual Image.....	8
Appliance Maintenance and Updates.....	8
GETTING STARTED	9
Setup.....	9
Obtaining panagenda GreenLight	9
Starting up on VMWare Player, Workstation, or Server	9
Starting up on VMWare ESX, ESXi, or vSphere.....	9
Starting the Virtual Appliance	10
Welcome Screen and IP Address.....	10
Appliance Login	10
Console.....	10
Graphical User Interface.....	11
Using the Web Interface	15
Login:	16
Default user login information	16
panagenda GreenLight License:	17
Getting Started	18
Domino Server Discovery	18
Add Server (optional).....	19

Setup Mail Profile.....	20
Setup User Account.....	21
ADDITIONAL INFORMATION.....	21
Remote Appliance Access (VNC)	21
Enlarging the Partition in the GreenLight Appliance.....	22
Adjust Docker IP Ranges	22
How to setup GL - Appliance.....	23
DISCLAIMER.....	24
Limitation of liability for external links	24

Welcome to panagenda GreenLight!



This guide will help you to set up panagenda GreenLight in no time! If you have any comments or suggestions, please contact us at support@panagenda.com.

About GreenLight

GreenLight is an extensive live network monitoring and historic reporting solution. Designed as a VMWare virtualized appliance, it comes with near zero configuration requirements.

panagenda GreenLight has everything you need to make your everyday monitoring and reporting life easier:

- Easy setup with near zero maintenance effort requirements
- Live monitoring dashboard in tabled format and a dynamic topology map
- Enterprise scalable data collection
- Built-in reporting environment - no need to have comprehensive Excel skills or do frustrating data collection and transformation
- Historic data is available anytime for in depth reporting and incident analysis
- Export reports as image and PDF - the collected data is never converted into just images but always at your fingertips
- Easy analyzing of database information - makes security audits or simply health checks so much more efficient
- Flexible alerting

Server System Requirements

Hardware

Trial Hardware Requirements:

- a modern CPU with at least 1 GHz
- 4 GB of RAM available to the virtual appliance
- 25 GB of free disk space for virtual appliance

Minimum hardware requirements for production environment:

- a modern 2vCPU with at least 1,5 GHz
- 8 GB of RAM available to the virtual appliance
- 120 GB of free disk space for virtual appliance

Additional resources may be required under all above described conditions, depending on data collection intervals, number of sensors enabled, and number of servers being monitored. panagenda and selected panagenda GreenLight business partners can help you evaluate the optimum hardware specifications for your environment.

Software

Operating System:

panagenda GreenLight comes as a VMWare appliance including its own operating system based on the popular AlmaLinux distribution (<https://almalinux.org/de/>). The requirements on the underlying operating system running the VMWare server solution depend on the chosen VMWare product. The panagenda GreenLight appliance runs with VMWare Player, Workstation, Server, ESX, ESXi and vSphere as host system. Detailed information about operating system requirements can be found on the VMWare product page of the selected product: www.vmware.com/products/

HCL Domino Notes:

A HCL Domino Notes user ID with access to the servers that are to be monitored and read access to at least one public names and address book on these servers is required.

For a more detailed analysis of historical performance data, read access to the HCL Domino log.nsf database may be required.

Depending on mail flow tracking and tracing, reader or author access is required for all mail router boxes (mail.box) and editor access for dedicated mail-in databases. For replication monitoring, application design and database content analysis, the respective HCL Notes user ID requires read access to the respective applications and documents. For detailed HCL Domino server monitoring, Release 4.5.x or higher of the Domino Server is required.

User ID Requirements:

panagenda GreenLight requires a HCL Domino Notes User ID to access your Domino infrastructure. The ID's password must be set to "**greenLightUseOnly**" (case sensitive!). You can set another password in the backend configuration file ramkin-config.properties (see GreenLight Administrator's Guide). The ID must have access to all the servers that should be monitored by panagenda GreenLight.

Network Access:

Company Network

The appliance must be able to reach the monitored servers via a TCP/IP network and must be reachable via web browser to access the panagenda GreenLight Web Interface.

Internet

For automatic license and software updates, panagenda GreenLight requires access to the internet. Alternatively, panagenda GreenLight can be updated via update packages that are installed via file upload to the panagenda GreenLight appliance. To acquire those packages for manual update please contact support@panagenda.com.

Client System Requirements

Operating System and Software Requirements:

As for hardware, panagenda GreenLight's Web Interface is available on any operating system supported by HTML5.

Browser Security and Network Access:

No special web browser security settings are required to run the panagenda GreenLight Web Interface.

To access the panagenda GreenLight Web Interface, you need to have access at least to the panagenda GreenLight appliance via TCP/IP, Port 443 (HTTPS).

GreenLight Appliance Details

panagenda GreenLight is developed as a virtual appliance:

The panagenda GreenLight Virtual Image

- AlmaLinux 9.3

panagenda GreenLight is based on the very popular AlmaLinux distribution, which is based on the source code of Red Hat Enterprise Linux (RHEL). This Linux distribution was chosen because of its stability and its long-time support (Maintenance until May 2027). Only security patches are configured for automatic update via the YUM (yellowdog updater modified).

- Docker 26 CE
- Docker Compose 1.11
- Tomcat 9 Application Server
- Nginx 1.25 Reverse Proxy Server
- Java 17 Virtual Machine
- PostgreSQL 14 Relational Database Server
- A sub-set of Domino 9.0.1 Linux 64 Bit binaries

Appliance Maintenance and Updates

Please take a look to [Appliance Maintenance and Updates](#) to find out how to handle Updates and Maintenance of the Appliance

GETTING STARTED

Setup

Obtaining panagenda GreenLight

Contact panagenda(via website: www.panagenda.com/en_uk/contact or email: office@panagenda.com) or one of our business partners to acquire the following two files:

- **greenLight2.ova** is a VMWare-specific file
- **greenLight2.lic** is your panagenda GreenLight license file. Place it in a folder on your local hard drive. This file will be uploaded to the virtual appliance in a later step using the panagenda GreenLight Web Interface.

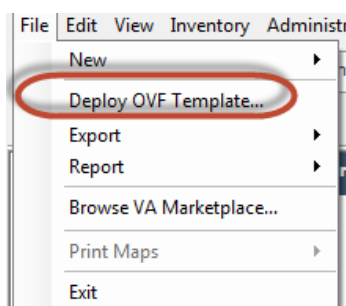
Starting up on VMWare Player, Workstation, or Server

- Start VMWare Player or VMWare Server
- Open Virtual Machine
 - Navigate to the folder where the greenLight2.ova is located
 - Select the file greenLight2.ova

Starting up on VMWare ESX, ESXi, or vSphere

Deploy OVF-Template

Open VMWare ESX, ESXi or vSpere and select:



The Deploy OVF Template dialog will open:

1. **Source:** Specify the location where you saved the GreenLight OVM file on your hard drive - for example: *C:/Temp/GreenLight290.ova*
2. **OVF Template Details:** In this step you can inform yourself about the GreenLight version you are about to deploy. When you are done, just click on Next
3. **Name and Location:** Is the next relevant step for deploying GreenLight. We recommend naming this template "**panagenda GreenLight 2**"
4. **Storage:** Then you have to select a destination storage for the virtual machine files.

5. **Disk Format:** In this step, please select the format you want to store the virtual disks. We recommend choosing "Thick Provision Eager Zeroed"
6. **Network Mapping:** Then select the network the deployed GreenLight template should use.
7. **Ready to Complete:** In the final step you are shown the options you set up. Click on Finish if you are satisfied with you setting to start the deployment task.

Starting the Virtual Appliance

Welcome Screen and IP Address

After starting up the appliance for the first time, you should be presented with a panagenda GreenLight welcome screen. If your network has a public DHCP server available, the system might already have acquired an IP address and will display the URL.

Use the shown IP address (interface URL) in your web browser to connect to the panagenda GreenLight web interface. If DHCP is not available within your network or the panagenda GreenLight appliance did not acquire any IP address, you have to configure the panagenda GreenLight appliance network settings (see "Network Settings:" on page 13).

```
-----  
Welcome to panagenda GreenLight  
Please review the 'Setup Guide' !  
IP Address: 192.168.81.154  
-----  
greenlight login: _
```

Appliance Login

GreenLight provides a console and a graphical user interface in order to configure operating system level settings like network, time and time zone settings.

Default login information:

user "root" with password "config"

Console

After login, basic information, such as disk space, system time and IP address, are shown:

```
-----
Welcome to panagenda GreenLight
Please review the 'Setup Guide'!
IP Address: 192.168.81.154
-----
greenlight login: root
Password:
Last login: Wed Oct 25 11:28:06 from 192.168.81.1
-----

Welcome to panagenda GreenLight
Please review the 'Setup Guide'!
Execute 'vncserver' to access GUI using 192.168.81.154:5901
-----

Services running:
gl_login      Up 2 minutes (healthy)
gl_node      Up 2 minutes (healthy)
gl_cron       Up 2 minutes (healthy)
gl_tomcat     Up 2 minutes (healthy)
gl_postgres  Up 2 minutes (healthy)
portainer    Exited (2) 3 weeks ago

System is up since 3 minutes
System time is Wed Oct 25 11:28:58 CEST 2017

Diskspace available:
19% 14G /
1% 68G /opt/panagenda/pgdata
9% 28G /opt/panagenda/appdata
1% 5.0G /opt/panagenda/logs
-----

froot@greenlight ~]#
```

Graphical User Interface

There are two ways to use the GUI to configure your GreenLight appliance:

Local

In order to start the GUI locally (Vmware Console), enter the command "**startx**"

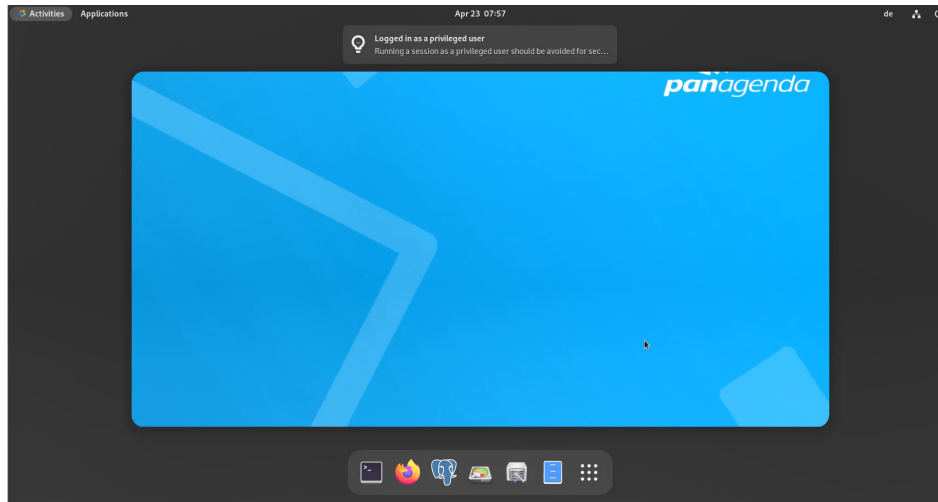
To start the GUI automatically when GreenLight is booted, please enter the following command: "**systemctl set-default graphical.target**"

Remote Access via VNC

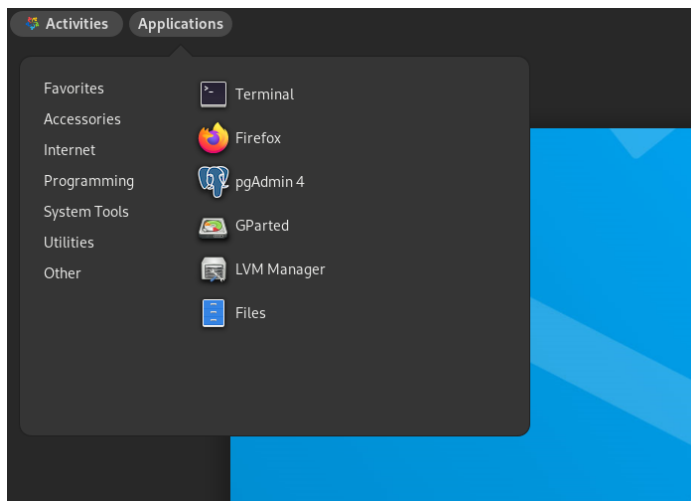
Please note that remote VNC access is only possible if the GreenLight appliance receives an IP address via DHCP.

Please refer to "[Remote Appliance Access \(VNC\)](#)" for more details on VNC access.

GUI Basics



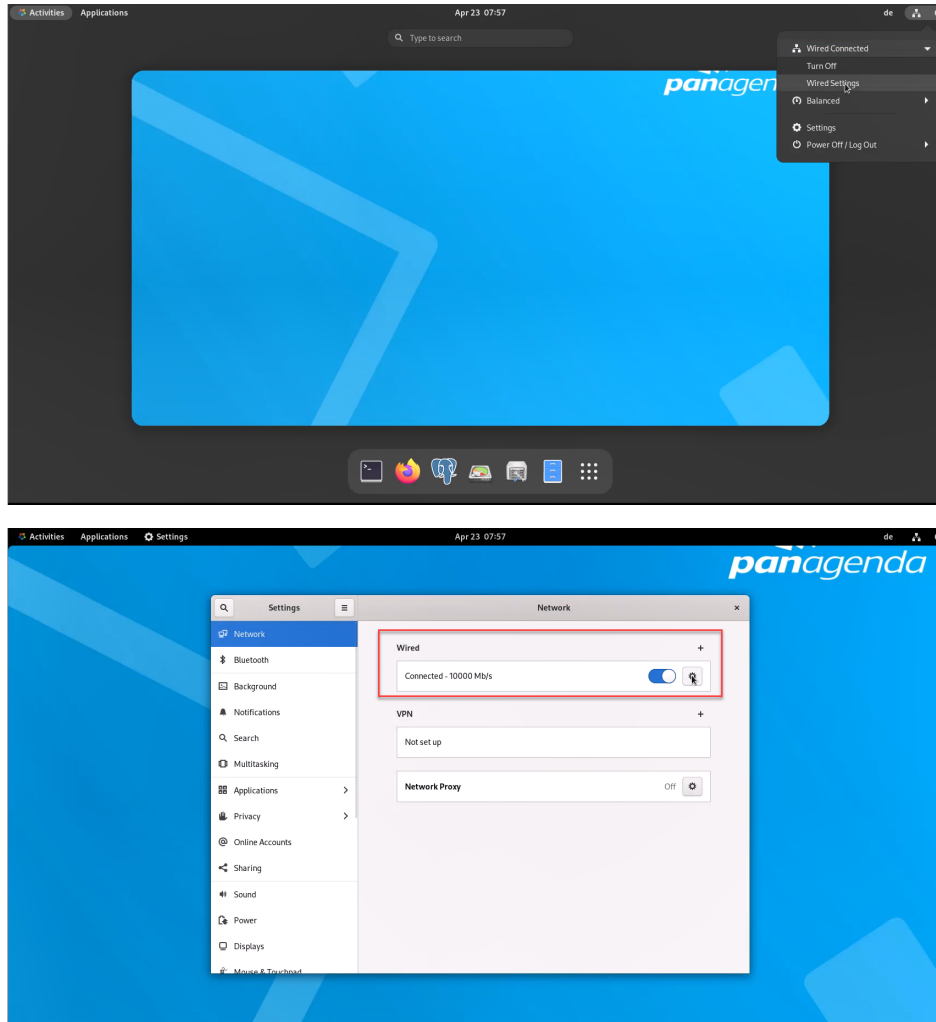
The Applications menu provides access to all required applications:



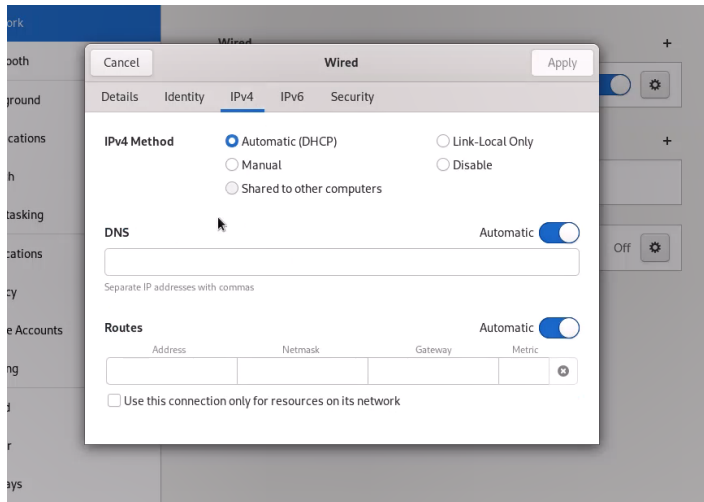
To check an established internet connection, a **web browser** (Mozilla Firefox) is available on the panagenda GreenLight appliance. You can use the **terminal window** to check if your TCP/IP connection is established, using Linux *ping* and *ifconfig* command. For more information about *ping* and *ifconfig* commands, type *man ping* or *man ifconfig* in the terminal console window. panagenda GreenLight log files can be found within the `/opt/panagenda/logs` directory. The main log file (`/opt/panagenda/logs/tomcat/greenlight.log`) holds essential information about panagenda GreenLight runtime behavior. Use the **Files** app to navigate to these log files. To check the panagenda GreenLight appliances system behavior, you can use the installed system monitor.

Network Settings:

To change the IP address and DNS configuration please click on the **Network** icon. Select the *Ethernet* connection and click on *Edit*:

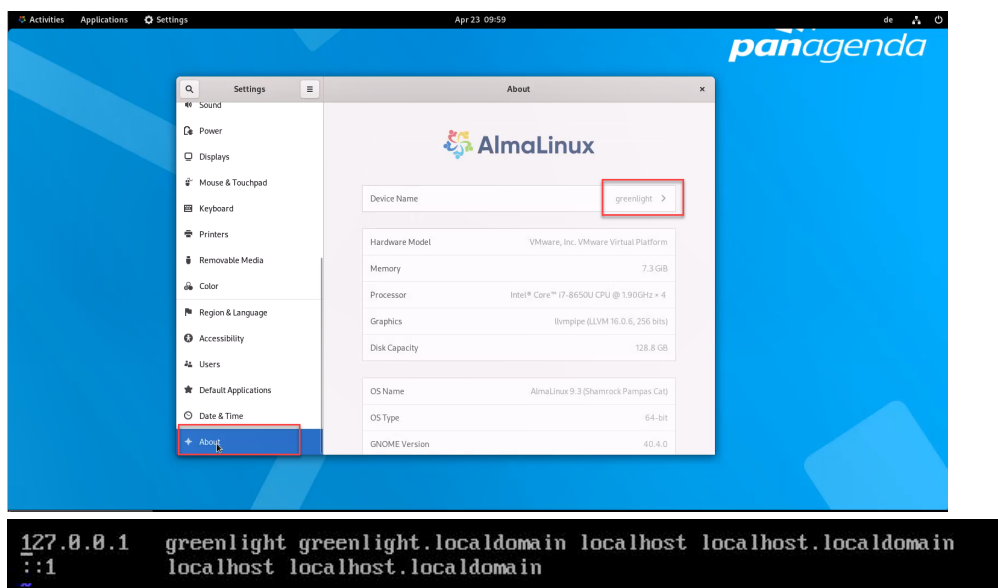


Go to the IPv4 Settings tab and select *Manual* from the *Method* drop-down menu to configure the network settings as required:



*If you configure "DNS Search domains", full qualified names will also be resolved. The virtual appliance **MUST** be able to resolve its own host name. Please verify that by opening a terminal window (click "Terminal" on the desktop) and using the ping command. It is recommended that both host/common name as well full qualified domain name are pingable.*

When changing the hostname (default is "GreenLight") in the **Host Information** application, please make sure to adapt the host alias properties for 127.0.1.1 in /etc/hosts. This can be done using the **gedit** application. It is recommended that both hostname and fully qualified domain name are entered here:



Time Zone Settings:

Please check the time zone settings of the appliance, and use the **Time and Date** application to adjust.



It is very important to adjust the appliance's time zone. Please reboot the appliance after changing the date/time settings as the web server and database system require a clean start with the new configuration.

CORS Setting

Please modify the following file and enter your GreenLight Server CORS config

- Open a console window and enter: `vim /opt/panagenda/appdata/gl/config`
- add: `PANAGENDA_CORS_ALLOWED_ORIGINS=your_GL_URL`
 - example: `PANAGENDA_CORS_ALLOWED_ORIGINS=https://gl-dev-01.panagenda.local`
- Save/close by entering: **hit ESC + :wq!**
- enter: `gl down`
- enter: `gl start`

Using the Web Interface

To connect to the panagenda GreenLight Web Interface, you have to enter the host IP address of the appliance (see "[Welcome Screen and IP Address](#)" on page 10) or its hostname (FQDN; see "Network Settings:" on page 13) into your web browser's address bar.

panagenda GreenLight uses HTTPS for secure communication between its appliance and its Web Interface, so you have to accept the security certificate, to go on.



Please be aware that the OfficeExpert appliance uses the following two IP Ranges by default for the internal Docker communication:

172.17.0.1/16

172.18.0.0/16

Please adjust them in case these two IP Ranges conflict with your internal network.

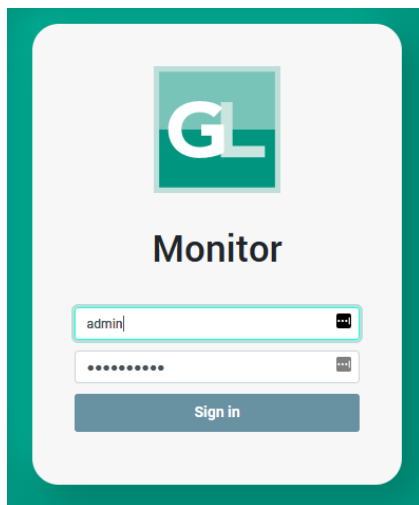
For details please refer to "[Adjust Docker IP Ranges](#)".

Login:

panagenda GreenLight uses an internal account management to support different user roles and access levels for different monitoring tasks. By default a user with administrative credentials is available to access the panagenda GreenLight Web Interface.

Default user login information

- Username: **admin**
- Password: **greenLight**



Please keep in mind, that panagenda GreenLight access control and account management implements the following security restrictions:

- One single user account cannot be logged on to a panagenda GreenLight appliance more than once at a given time
- Only one maintenance account can be logged on to a panagenda GreenLight appliance at a given time

Every time you log into the panagenda GreenLight workspace, you can choose from a list of languages used within the Web Interface. If your preferred language is not available, contact your local panagenda GreenLight administrator for other language packages on hand.

panagenda GreenLight License:

If you connect to your panagenda GreenLight appliance the first time, you will be asked to upload your panagenda GreenLight license file (see "[Obtaining panagenda GreenLight](#)" on [page 9](#)).

License Agreement

The first time, you install a trial or enterprise license file through the panagenda GreenLight Web Interface, you have to accept the panagenda GreenLight license agreement. Only users with administrative access rights to panagenda GreenLight can accept this. The agreement must be accepted at least once for panagenda GreenLight to work properly.



If your panagenda GreenLight appliance is connected to the internet, it will check for available updates on the panagenda update servers. panagenda recommends to download and always install all available updates.

No valid license found.

If you are an Administrator, please complete the configuration in the Admin Portal

Logout

Admin Portal



GreenLight

Sensors

Servers

Users

Reports

Communication

Monitor

License

Notes ID

Discovery

Maintenance

Misc

Licensee **Please upload a valid license**



Click to upload
new license file

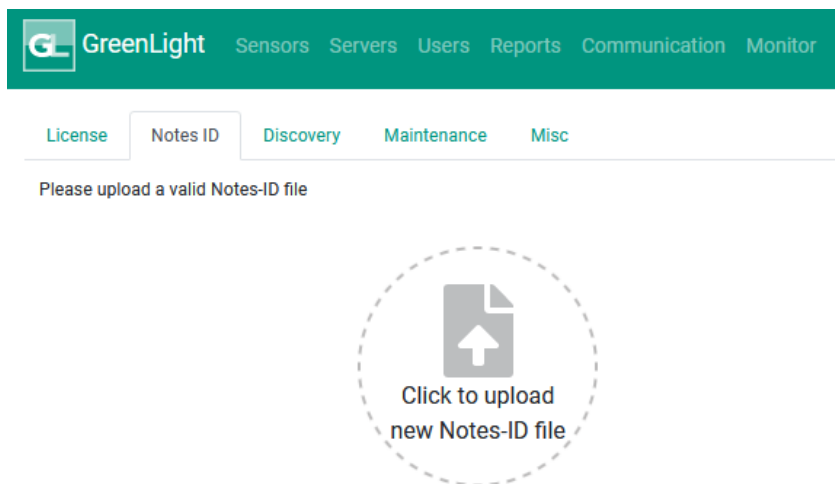
Getting Started

After uploading a License File, it is a mandatory step to upload a Notes ID for GreenLight.

Click on "Click to upload new Notes ID file". Select your file to upload it. Please ensure that the ID file meets the following requirements before uploading:

- Password set to "greenLightUseOnly"
- User ID has access to all servers that are supposed to be monitored
- User ID has access to "names.nsf" on entry server

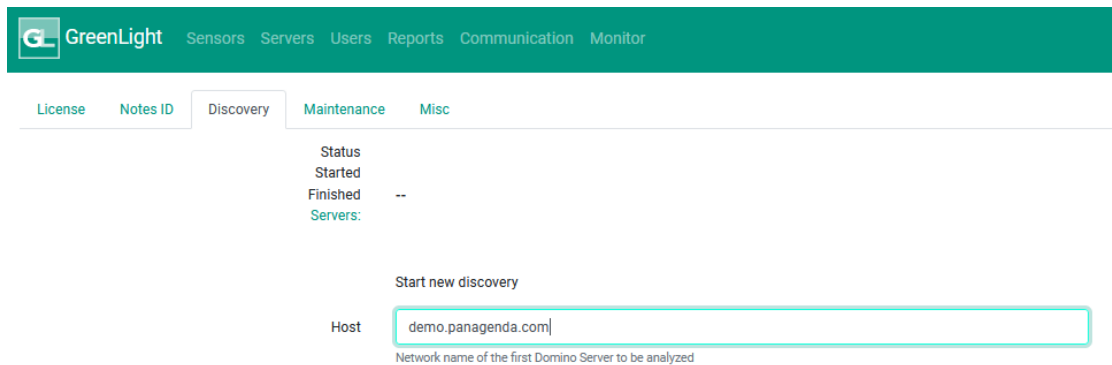
Please make sure that the Notes ID uses the default GreenLight password (if not, an error will be shown). The default password can be overwritten by a config property setting.



| After uploading the Notes ID, please restart the GreenLight appliance

Domino Server Discovery

Basic Settings:



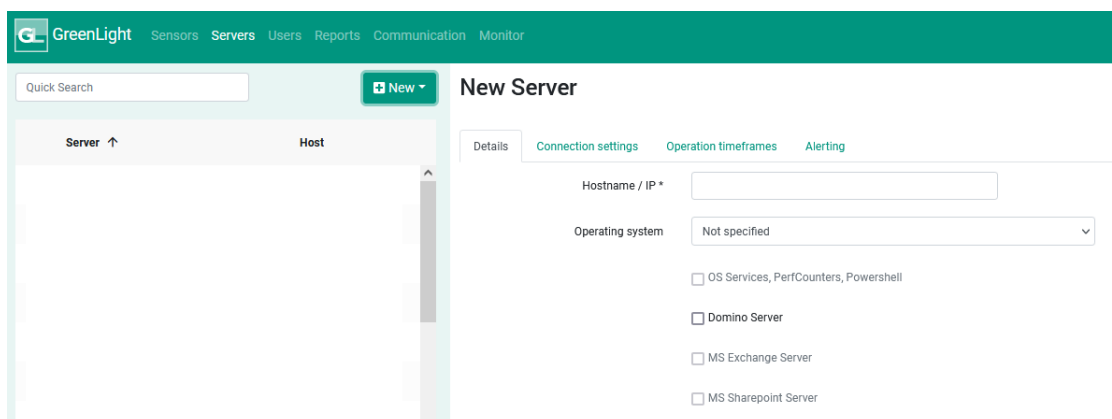
Starting the Discovery

After filling the required (or desired information) into the form, you can start your domino network discovery. Depending on your network and settings, the duration of the discovery can vary. If it is over,

The panagenda GreenLight Domino network discovery is fully cluster-aware and creates special cluster nodes to monitor and display special cluster information.

Add Server (optional)

You can add any device to your panagenda GreenLight monitoring environment for example if you would like to add your Domino server manually or devices couldn't be found by the Domino network discovery scan (for example non-domino-servers, printers, routers).



You can enter any network **Host Name** or **IP** address of an existing network device. After that, you can check, if a Domino Server runs on your device. In case of that, the **Domino Server Name** will be entered in the corresponding field.

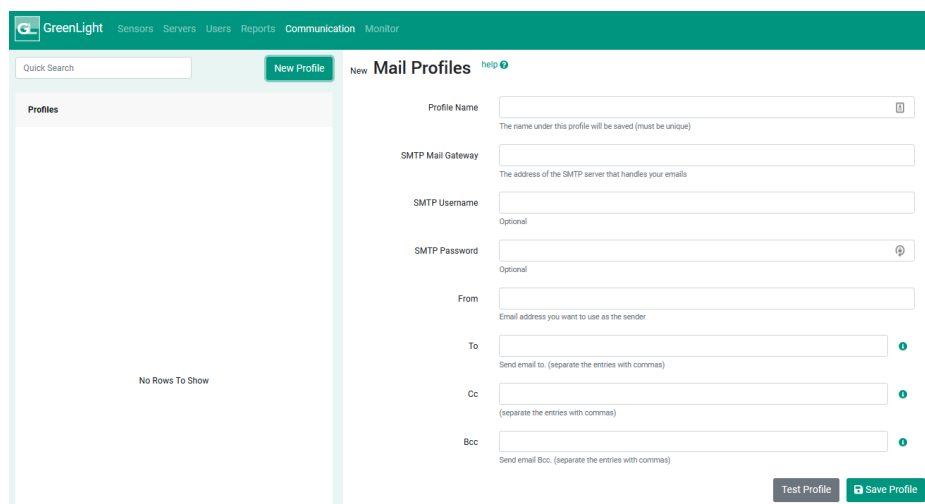
You can select a Network Authority in this dialog as well (see "[Network Authority](#)" on page 25). In addition you can set a **Location**, **Time Zone** and a **Separator Format**.

If you click on next, you can define the business hours and maintenance periods (see "[Business Hours and Maintenance Periods](#)" on page 24).

If you click further on next, you can specify mail recipients by severities per host.

Setup Mail Profile...

Here you can define a SMTP mail receiver. Type in at least the required information to the appropriate field to be able to save it, what makes the profile available under SMTP Mail Actions.



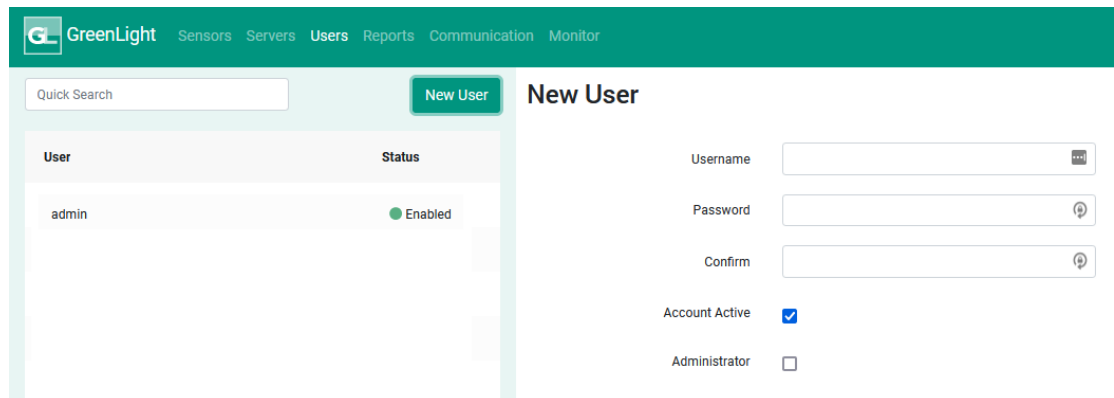
The screenshot shows the 'New Mail Profiles' form in the GreenLight interface. The form is titled 'New Mail Profiles' and includes a 'help' icon. It features several input fields for configuring an SMTP mail profile:

- Profile Name:** A required field with a tooltip stating 'The name under this profile will be saved (must be unique)'.
- SMTP Mail Gateway:** A required field with a tooltip stating 'The address of the SMTP server that handles your emails'.
- SMTP Username:** An optional field.
- SMTP Password:** An optional field with a password icon.
- From:** A field with a tooltip stating 'Email address you want to use as the sender'.
- To:** A field with a tooltip stating 'Send email to. (separate the entries with commas)'.
- Cc:** A field with a tooltip stating '(separate the entries with commas)'.
- Bcc:** A field with a tooltip stating 'Send email Bcc. (separate the entries with commas)'.

At the bottom right of the form, there are two buttons: 'Test Profile' and 'Save Profile'.

Setup User Account...

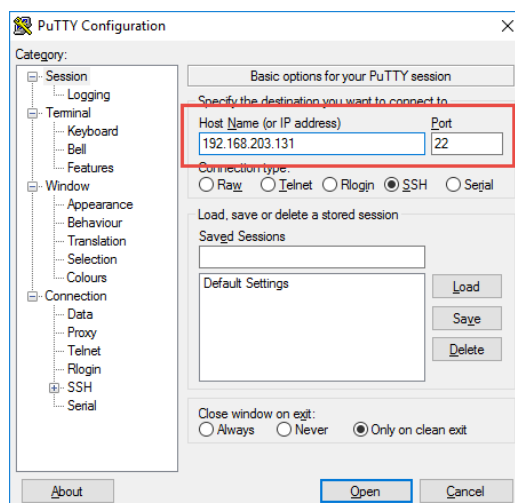
If you wish to use panagenda GreenLight from multiple workstations at the same time, please create as many users as required using this form. Specify a Login Name, a Password and in addition, if this account should be active from now on and if the user should get administrator rights.



ADDITIONAL INFORMATION

Remote Appliance Access (VNC)

In order to enable access to the Linux GUI, a VNC server is pre-installed on the GreenLight appliance. To start the VNC server, please follow these steps:



1. Start a SSH connection to the GreenLight appliance. For this, a tool such as PuTTY is needed (<http://www.chiark.greenend.org.uk/~sgtatham/putty/download.html>):

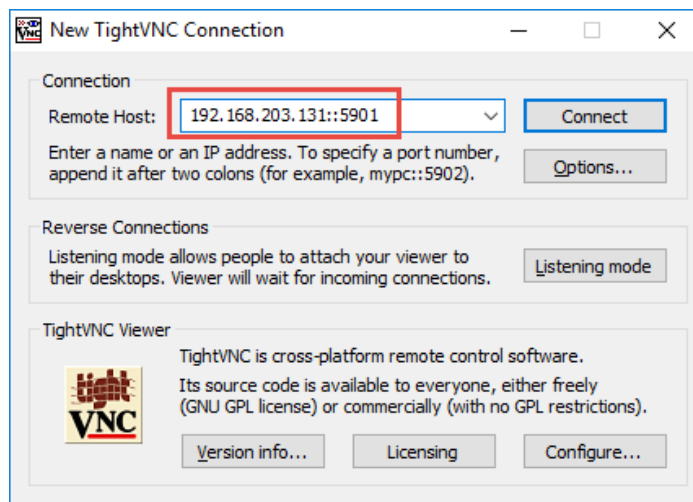
2. Log into the appliance with the user **root**:
3. To start the VNC server, enter the command **vncserver**:

```
[root@localhost ~]# vncserver  
  
New 'localhost.localdomain:1 (root)' desktop is localhost.localdomain:1  
  
Starting applications specified in /root/.vnc/xstartup  
Log file is /root/.vnc/localhost.localdomain:1.log
```

Now you can access the appliance's Linux GUI using a VNC client, such as Tight VNC Client (<http://www.tightvnc.com/download.php>):

The default connection password is **config**. It can be changed by issuing the command

vncpasswd in PuTTY.



The VNC server is merely a tool to help in exceptional situations where the VM console cannot be accessed otherwise. Due to security considerations it is purposely configured for manual startup only.

Enlarging the Partition in the GreenLight Appliance

Please refer to the following article in our kbase: [Extending GreenLight Disks \(GL > v5.0\)](#)

Adjust Docker IP Ranges

To adjust the IP ranges for Docker, please perform the following steps:

- Open the terminal and enter the following command:

```
vim /opt/panagenda/appdata/gl/config
```

- Add at the bottom of this file the following two lines with the ranges you want to use

-hit "i" for insert

```
PANAGENDA_DOCKER_BRIDGE=172.30.0.1/16
```

```
PANAGENDA_COMPOSE_NETWORK_SUBNET=172.31.0.0/16
```

- Save/close
- afterwards execute the following command:

```
gl customize
```

How to setup GL - Appliance

This video contains:

- Setup appliance
- Adjust OS settings (Network, etc.)
- Adjust GL settings



Sorry, the video is not supported in this export.

But you can reach it using the following URL:

Movie URL not available.

DISCLAIMER

panagenda, panagenda product names and all related logos are trademarks owned by panagenda. All other names of products and enterprises in this document are the property of their respective owners.

panagenda reserves the right to update this document without being obliged to announce the changes or revisions.

Although all due care has been taken in the preparation and presentation of this document, the corresponding software may have changed in the meantime. panagenda therefore disclaims all warranties and liability for the accurateness, completeness, and currentness of the information published, except in the case of intention or gross negligence on the part of panagenda or where liability arises due to binding legal provisions.

Limitation of liability for external links

This document contains links to the websites of third parties ("external links"). As the content of these websites is not controlled by panagenda, we cannot assume any liability for such external content. In all cases, the provider of information of the linked websites is liable for the content and accuracy of the information provided. At the point in time when the links were placed, no infringements of the law were recognisable to us. As soon as an infringement of the law becomes known to us, we will immediately remove the link in question.