

# Modern Roaming for Notes and Nomad

## Cheaper Faster Better Stronger

April 11<sup>th</sup>, 2024



# Host & Speaker



**Henning Kunz**

COO

[henning.kunz@panagenda.com](mailto:henning.kunz@panagenda.com)



**Marc Thomas** 

Senior Solution Architect

[marc.thomas@panagenda.com](mailto:marc.thomas@panagenda.com)



## All attendee lines are muted

This is to prevent interruptions during the presentation.



## Please submit questions via the Chat or Q&A panel

Your questions will be addressed directly during the webinar or in the Q&A section after the presentation.



## The webinar is being recorded

After the webinar, we will send you a mail to give access to the recording and presentation slides.

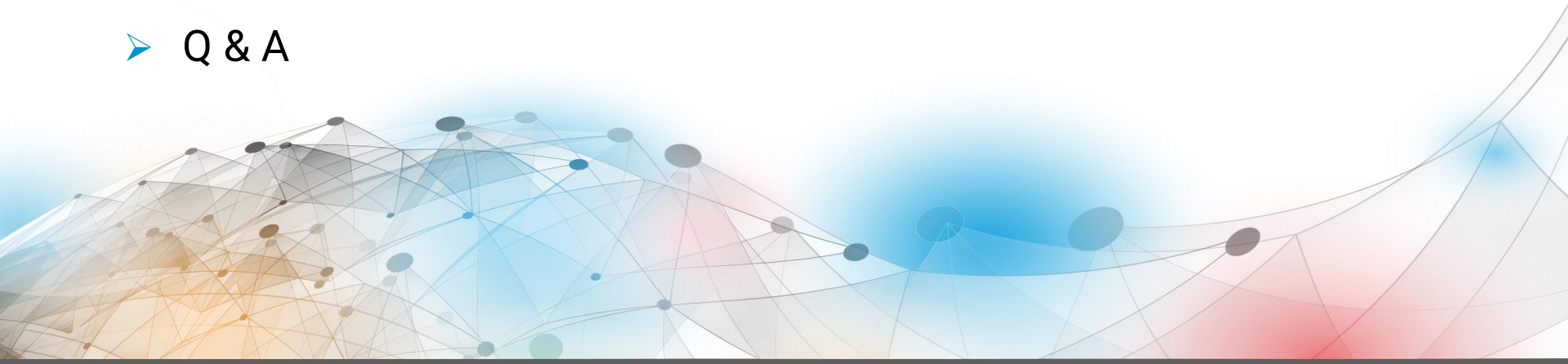



## Share your feedback with us

Use the link provided at the end to let us know what we can do better.

# Agenda

- Why you should **NOT** use Notes Roaming User
- What you should expect from a modern Roaming solution
- Demo – HCL Notes
- Demo – HCL Nomad Web & Mobile
- Bonus – From Notes to Nomad
- Q & A






Why you should **NOT** use Notes  
Roaming User

# Why you should **NOT** use Notes Roaming User

- Designed for Notes Basic Clients (Notes 6.0.1)
- Does only contain a subset of the user settings
  - Notes.ini
  - Eclipse Preferences
- Footprint of the “roaming set” starts with
  - New user with no data = 20 MB
  - Existing user with data = easily 100 MB and more
- High(er) network load compared to other solutions
- Roaming start takes (a lot of) time
- Not suitable for non-persistent virtual environments (Citrix, VMWare, etc.)
- Easy to enable (get in) and (very) hard to get out
- Does not support Nomad Web and Mobile



**What you should expect from a  
modern Roaming solution**

# What you should expect from a modern Roaming solution



- Supports all client types
  - Notes Basic & Standard (Windows & MacOS)
  - Nomad Web (Chrome, Edge & Firefox)
  - Nomad Mobile (Android & iOS)
- Roams **ALL** needed user data
- Small footprint for “roaming sets”
  - < 2 MB (Notes)
  - < 200 kB (Nomad)
- Very low network load → works perfectly with remote workers
- Supports all virtual environments
  - Persistent AND non-persistent
  - WTS, Citrix, VMWare, etc.

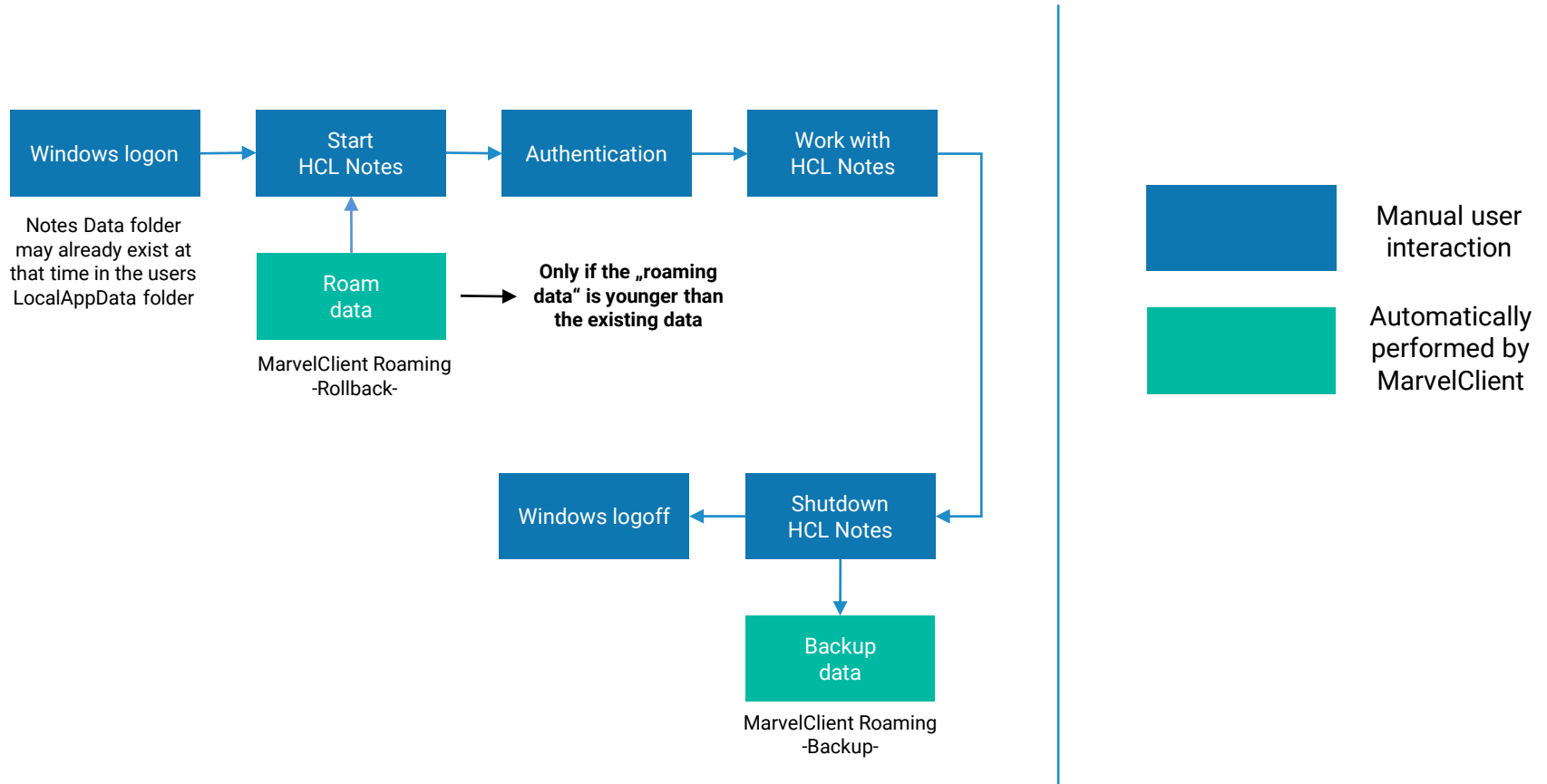




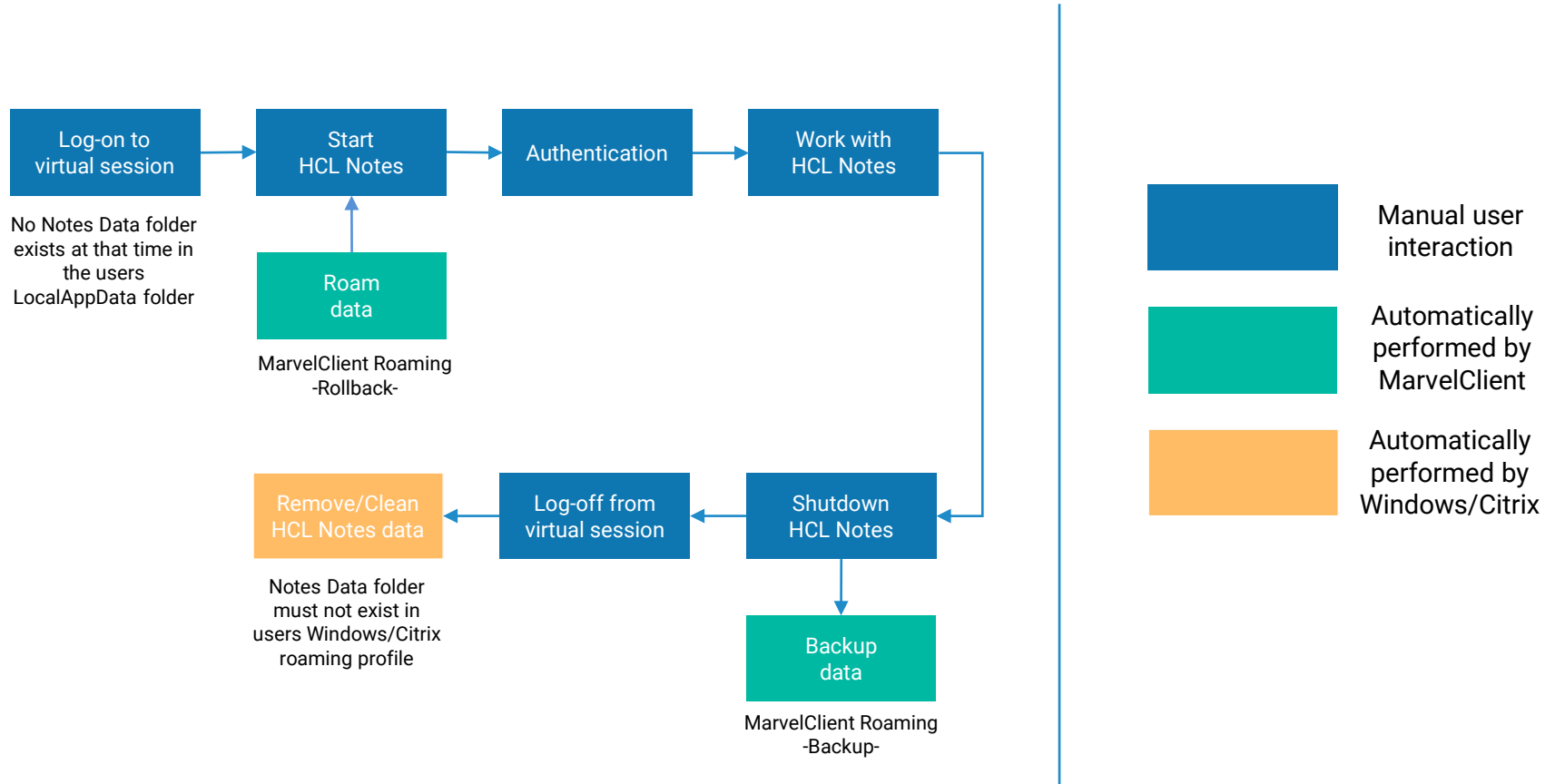
# MarvelClient™ Roaming



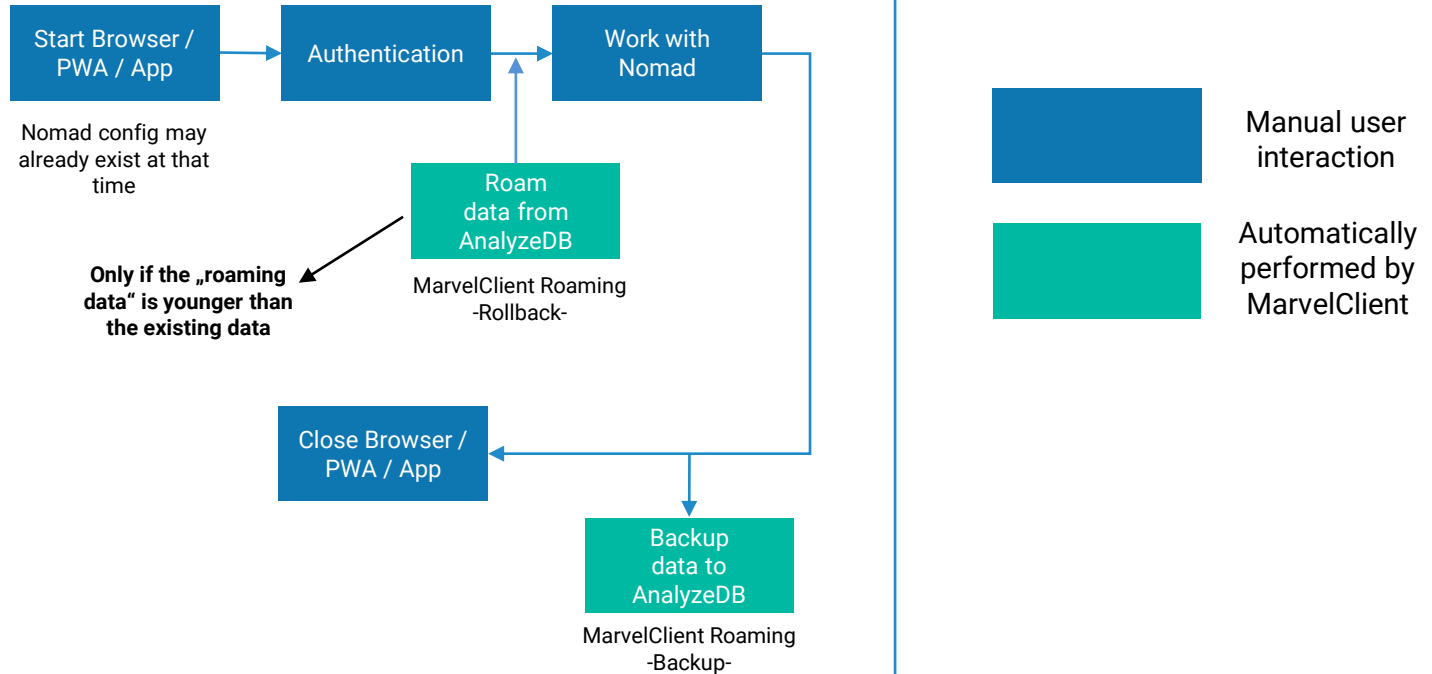
# MarvelClient Roaming architecture for Laptops/Desktops



# MarvelClient Roaming architecture for Citrix/VDI



# MarvelClient Roaming architecture for Nomad





# Live Demo

## MarvelClient Roaming with Notes



Upgrade Your Time



Recycle Bin



This PC



panagenda



Webinar.txt



HCL Notes



SharedData



LocalAppData

Workspace - HCL Notes

File Edit View Create Tools Window Help

Open [All Mail] Search All Mail

Discover Home

**Workspace**

- 1st page
- my products
- Workspace 0
- Workspace 1
- Workspace 2
- Workspace 3

**Adler's Contacts**  
on Local

**Bookmarks (12.0.1)**  
on Local

**Outgoing Mail**  
on Local

**Notebook**  
on Local

+ New Page

Online

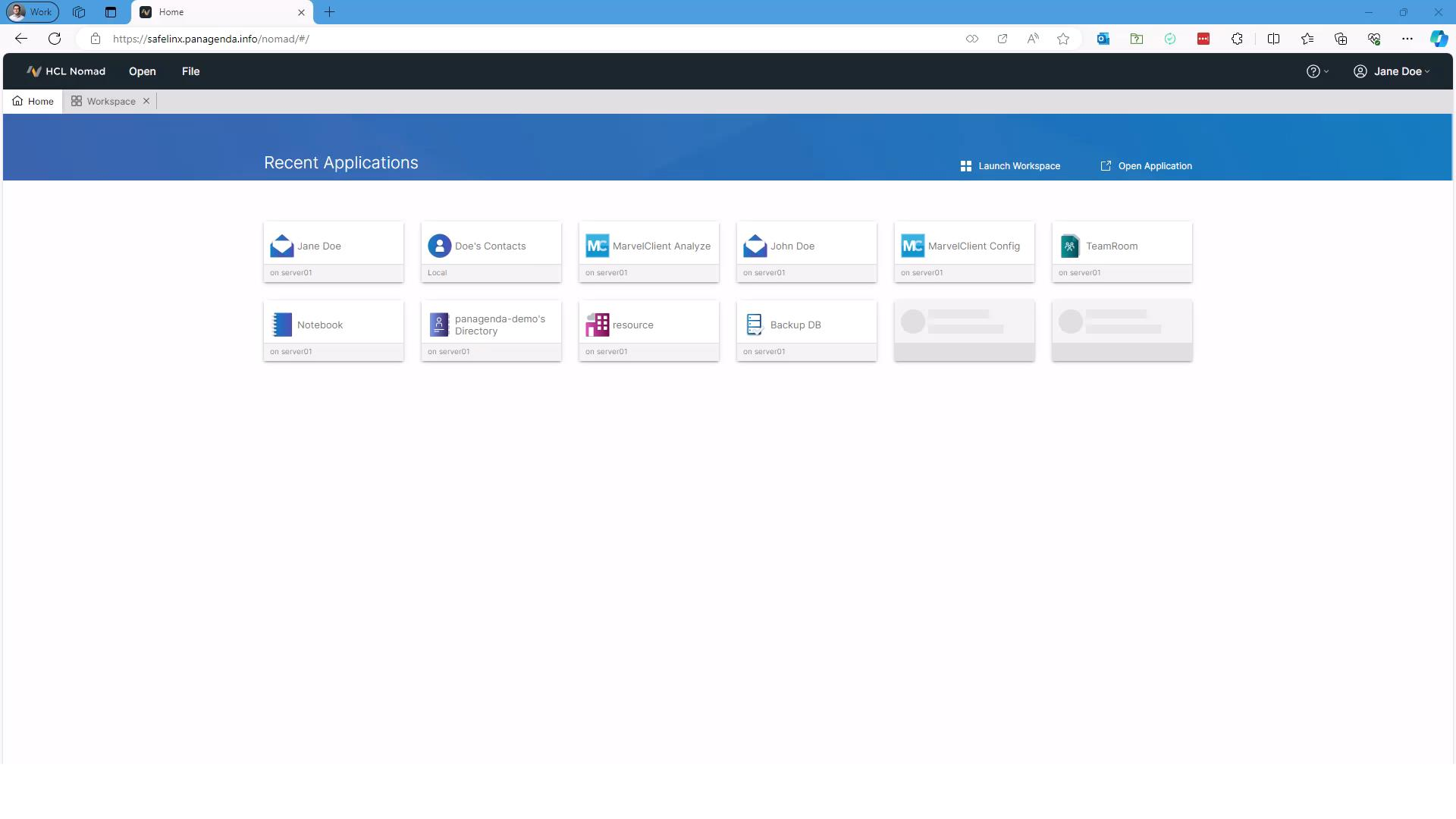


**Demo**

# MarvelClient Roaming with Nomad



Upgrade Your Time



## Recent Applications

Launch Workspace

Open Application

Jane Doe  
on server01

Doe's Contacts  
Local

MarvelClient Analyze  
on server01

John Doe  
on server01

MarvelClient Config  
on server01

TeamRoom  
on server01

Notebook  
on server01

panagenda-demo's Directory  
on server01

resource  
on server01

Backup DB  
on server01

[Placeholder]

[Placeholder]



## Proxy Setup

[Next](#)**Domino Client Setup**

Press 'Proxy Setup' to configure using a Nomad proxy server or enter the following information to configure using your Domino Server and then press 'Next'.

Your name

For example: Mary Smith

Domino server name

For example: Maple/HCL

Server address

For example: maple.hcl.com

[Privacy Policy](#)

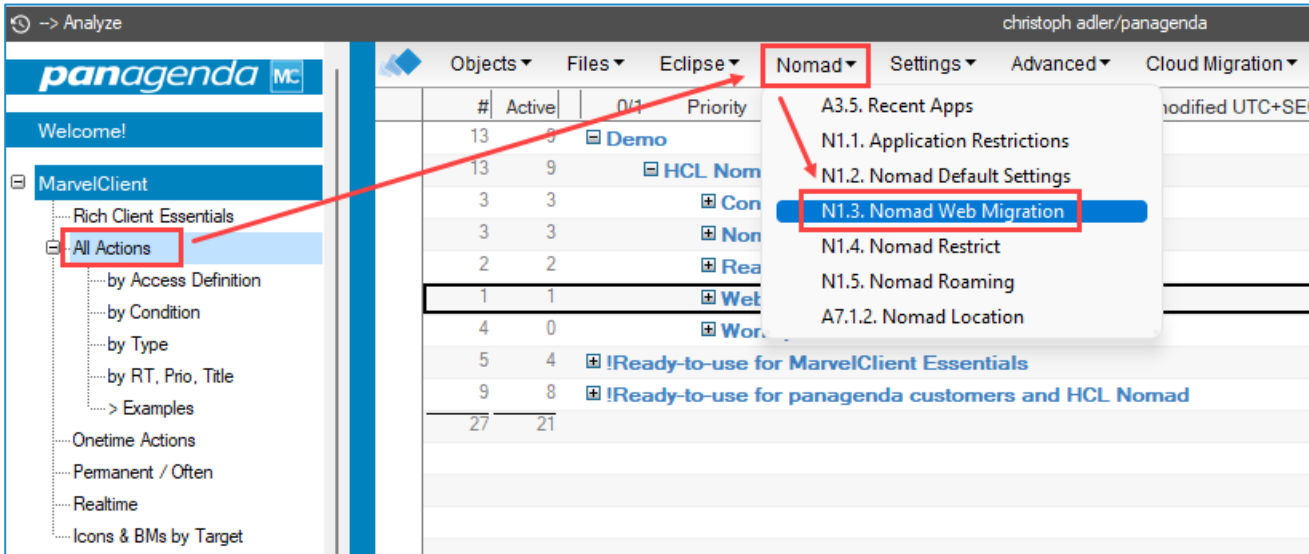
## **Bonus – From Notes to Nomad**



- This functionality is included in CCB  
(free for all customers with active HCL maintenance)
- **Requirement**  
Every user **must** have a user profile / upload document in the MarvelClient Analyze database (including bookmark.xml, desktop.xml and notes.ini) and **must not** be a Notes Roaming User 😊

# Nomad Web Migration – from Notes to Nomad (cont.)

- A single and simple MarvelClient action brings happiness for your users

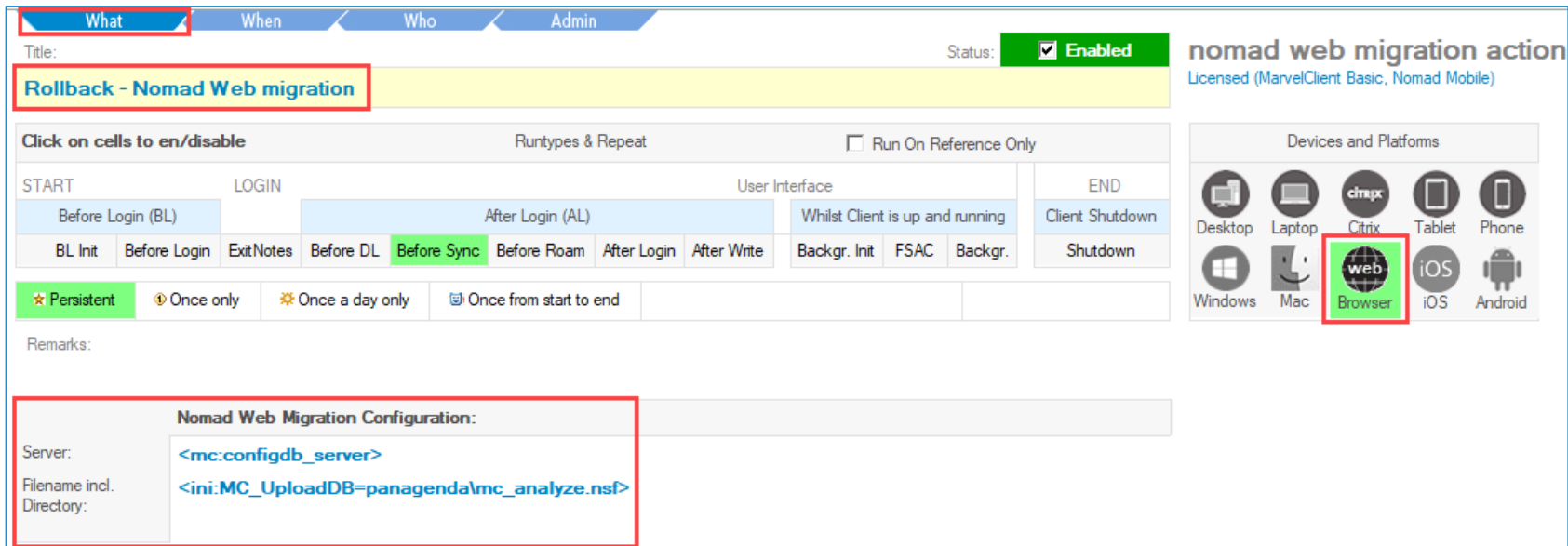


The screenshot displays the panagenda MarvelClient interface. On the left, the 'MarvelClient' tree view shows 'All Actions' highlighted with a red box. A red arrow points from this box to the 'Nomad' dropdown menu in the top navigation bar, which is also highlighted with a red box. The dropdown menu lists several options, with 'N1.3. Nomad Web Migration' highlighted in blue and also enclosed in a red box. The main content area shows a table with columns for '#', 'Active', '0/1', and 'Priority'. The table contains several rows of data, including a summary row at the bottom with values 27 and 21. The interface also shows a 'Welcome!' message and a 'Rich Client Essentials' section.

#	Active	0/1	Priority
13	9		
13	9		
3	3		
3	3		
2	2		
1	1		
4	0		
5	4		
9	8		
27	21		

# Nomad Web Migration – from Notes to Nomad (cont.)

- A single and simple MarvelClient action brings happiness for your users



**What** / When / Who / Admin

Title: **Rollback - Nomad Web migration** Status:  **Enabled**

**nomad web migration action**  
Licensed (MarvelClient Basic, Nomad Mobile)

Click on cells to en/disable Runtypes & Repeat  Run On Reference Only

START	LOGIN	User Interface	END
Before Login (BL)	After Login (AL)	Whilst Client is up and running	Client Shutdown
BL Init	Before Login	ExitNotes	Shutdown
	Before DL	Before Sync	
	Before Roam	After Login	
	After Write	Backgr. Init	
		FSAC	
		Backgr.	

Persistent  Once only  Once a day only  Once from start to end

Remarks:

**Nomad Web Migration Configuration:**

Server: `<mc:configdb_server>`

Filename incl. `<ini:MC_UploadDB=panagenda\mc_analyze.nsf>`

Directory:

Devices and Platforms: Desktop, Laptop, Citrix, Tablet, Phone, Windows, Mac, **Browser**, iOS, Android

# Danke!



Your Feedback Matters to Us





WEBINAR

Serie: HCL Notes und Domino in 2024 meistern

# Alles neu macht der Mai – Wir durchleuchten den verbesserten Notes-Eigenschaftendialog

14. Mai, 2024 | 10:00 MESZ

Registrieren >



**Marc Thomas**

Senior Solutions Architect & HCL Ambassador  
*panagenda*

  
**panagenda**  
WEBINAR

