

# The year in review MarvelClient in 2025

December 09<sup>th</sup>, 2025



## Host / Speaker & Support



**Christoph Adler** 

Head of Solution Consulting

[christoph.adler@panagenda.com](mailto:christoph.adler@panagenda.com)



**Marc Thomas** 

Senior Solutions Architect

[marc.thomas@panagenda.com](mailto:marc.thomas@panagenda.com)



## All attendee lines are muted

This is to prevent interruptions during the presentation.



## Please submit questions via the Chat or Q&A panel

Your questions will be addressed directly during the webinar or in the Q&A section after the presentation.



## The webinar is being recorded

After the webinar, we will send you a mail to give access to the recording and presentation slides.



## Share your feedback with us

Use the link provided at the end to let us know what we can do better.

# Agenda

- **Recap 2025 – HCL**
- **Recap 2025 – MarvelClient**
- **Support Stories 2025**
- **Sneak Peek for 2026**
- **Q & A**



A 3D rendering of white, rectangular steps leading upwards from the bottom left towards the center. A white ladder with blue accents is leaning against the first step on the left. The background is a light, hazy blue gradient.

# Recap 2025 - HCL

## HCLSoftware



Notes / Domino 14.5 released

- June 2025

Notes / Domino 14.5.1 EA1 released

- November 2025



# Recap 2025 – HCL Releases

- 02 **Notes** 11.0.1FP9IF1, **Notes** 14.0FP3IF1, **Nomad** 1.0.45\* + 1.0.46\* + 1.0.62\*\*
- 03 **Notes** 12.0.2FP6, **Nomad Web** 1.0.15 + 1.0.15IF1, **Nomad** 1.0.63\*\* + 1.0.64\*\*
- 04 **Notes** 14.0FP4, **Notes** 14.5 EA3, **Nomad** 1.0.47\* + 1.0.65\*\*
- 05 **Nomad** 1.0.48\* + 1.0.66\*\*
- 06 **Notes** 14.5, **Nomad Web** 1.0.16
- 07 **Nomad** 1.0.49\* + 1.0.67\*\* + 1.0.68\*\*
- 08 **Notes** 12.0.2 FP7
- 09 **Notes** 14.5 FP1, **Nomad Web** 1.0.17
- 10 **Nomad** 1.0.50\*
- 11 **Notes** 14.5.1 EA1, **Nomad** 1.0.51\*
- 12 **Notes** 12.0.2 FP7 IF1, **Nomad** December 2025 Release\*\*



**27** public releases (Notes + Nomad only)  
+ 2 early access releases

\* iOS

\*\* Android

# Recap 2025 – Security Updates for Domino



Based on

## HCL Domino 14.0

we got **36** security updates

<https://e8-domino.preemptive.com.au/>

What security updates are you missing from Domino?

What version of Domino are you running? 14 ▾

**Your servers are currently missing 36 security updates. Please see below:**

[Please click here for upgrade information.](#)

Version	SPR	Description
14.0 FP1	DNADD2GQBW	Prevent OIDC signing keys from expiring more quickly than Domino can update them by enforcing a minimum lifetime
14.0 FP1	JLUSCYRMHF	Fixed an issue where passkeys were not working when a user had Scandinavian characters in their common name or person document
14.0 FP1	VMRUD2EMWW	Fixed an issue where 10.0.1 clients could not connect to 14.0 servers once inbound mandated encryption was enabled



**Recap 2025 - MarvelClient**

# Recap 2025 – MarvelClient Releases



## 2025

- 01 mc(64).dll 14.0.11, libmc.dylib 14.0.11, Upgrade 14.2.9
- 02 mc(64).dll 14.0.12, Templates 20250205162600 + 20250224145100, Upgrade 14.3.0 + 14.3.1 + 14.3.2
- 03 mc(64).dll 14.0.14, (14.5.0 Essentials), Upgrade 14.3.3 + 14.4.4
- 04 mc(64).dll 14.0.15 + 14.0.16, Upgrade 14.5.0
- 05 Upgrade 14.5.1
- 06 mc(64).dll 14.5.1 + 14.5.2 + 14.5.3 + 14.5.4 + 14.5.5, libmc.dylib 14.5.3, Templates 20250604101000 + Plugin 14.5.0
- 07 Templates 20250717134800, Upgrade 14.5.2 + 14.5.3 + 14.5.6 + 14.5.7
- 08 mc(64).dll 14.5.6, libmc.dylib 14.5.6, Templates 20250819094700
- 09 mc(64).dll 14.5.7 + 14.5.8, libmc.dylib 14.5.8, Templates 20250908145200
- 10 mc(64).dll 14.5.9 + 14.5.10,
- 11 Upgrade 14.5.8 + 14.5.9

**32 (2\*16) .dll + 4 .dylib releases**

**12 (2\*6) Template releases**

**1 Eclipse Plugin releases**

**11 Upgrade releases**

# Recap 2025 – MarvelClient Release Details



The previous slide summarized in a few facts.

**Enhancements: 35**

**Changes: 14**

**Fixes: 60**

**New features: 10**

## MarvelClient (excl. Upgrade)

**Fun Facts: Lines of code (net)**

Binary (C++): >150,000

Eclipse Plugin (Java): >20,000

Config DB (LS,Java,@): ~130,000

Analyze DB (LS,Java,@): ~36,000

**Total: 336,000**

Roughly 11,200 book pages  
= 8 x Lord of the Rings or War and Peace

## MarvelClient Upgrade (only)

**Fun Fact: ~25,000 lines of code (net)**

(excluding Notes database code)

Roughly 850 book pages

**Covering \*many\* different scenarios**

# Recap 2025 – MarvelClient Personal Highlight

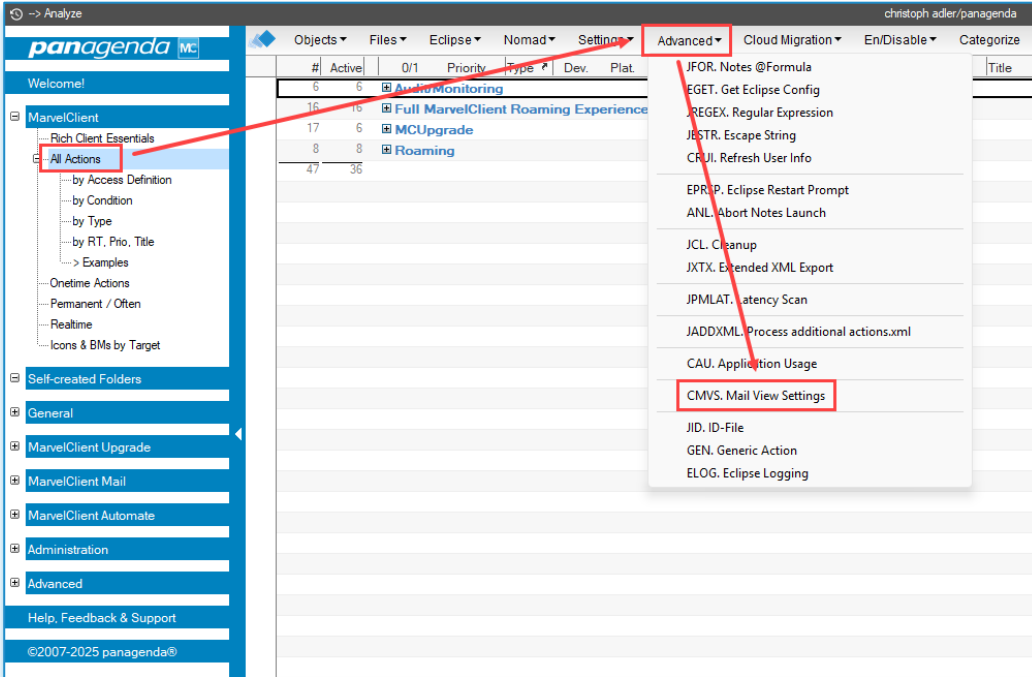


## Release 2025-06-25 - 14.5.5

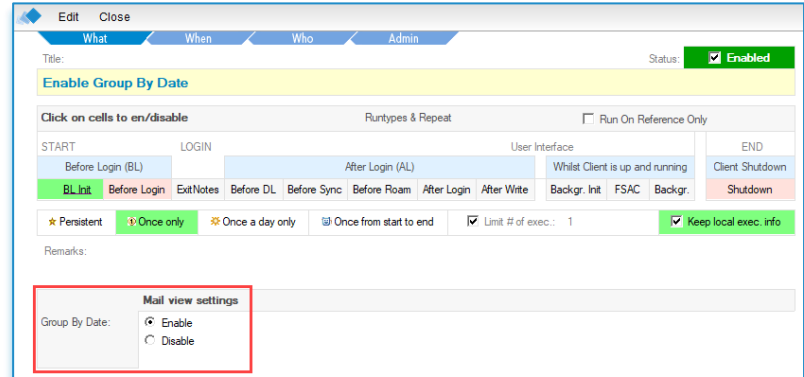
### **NEW**

New action to globally enable or disable the "Group By Date" option in a user's mail file. This changes both the default setting for newly opened folders/views, and also the behavior of folders/views that have already been opened. Requires template 20250819 or higher.

# Recap 2025 – MarvelClient Personal Highlight



The screenshot shows the panagenda software interface. The left sidebar contains a tree view with categories like 'MarvelClient', 'Self-created Folders', 'General', 'MarvelClient Upgrade', 'MarvelClient Mail', 'MarvelClient Automate', 'Administration', and 'Advanced'. The 'Advanced' category is selected, and a dropdown menu is open, listing various actions such as 'JFOR. Notes @Formula', 'EGET. Get Eclipse Config', 'REGEX. Regular Expression', 'JSSTR. Escape String', 'CRJL. Refresh User Info', 'EPR.P. Eclipse Restart Prompt', 'ANL. Abort Notes Launch', 'JCL. Cleanup', 'JXTX. Extended XML Export', 'JPMLAT. Latency Scan', 'JADDXML. Process additional actions.xml', 'CAU. Application Usage', 'CMVS. Mail View Settings', 'JID. ID-File', 'GEN. Generic Action', and 'ELOG. Eclipse Logging'. The 'CMVS. Mail View Settings' option is highlighted with a red box. The main window displays a table with columns for '#', 'Active', '0/1', 'Priority', 'Type', 'Dev.', and 'Plat.', and a 'Title' column. The table contains several rows of data, including 'AutoMonitoring', 'Full MarvelClient Roaming Experience', 'MCUpgrade', and 'Roaming'.



The screenshot shows the 'Enable Group By Date' configuration window. The window has a title bar with 'Edit' and 'Close' buttons. Below the title bar, there are tabs for 'What', 'When', 'Who', and 'Admin'. The 'Status' is set to 'Enabled'. The main content area is titled 'Enable Group By Date' and contains a section for 'Click on cells to en/disable' with a 'Runtypes & Repeat' section. The 'Runtypes & Repeat' section includes a 'START' section with 'Before Login (BL)', 'LOGIN', and 'After Login (AL)' options, and an 'END' section with 'Client Shutdown' and 'Shutdown' options. The 'Runtypes & Repeat' section also includes a 'User Interface' section with 'Whilst Client is up and running' and 'Client Shutdown' options. The 'Runtypes & Repeat' section includes a 'Run On Reference Only' checkbox. The 'Runtypes & Repeat' section includes a 'Limit # of exec.: 1' field and a 'Keep local exec. info' checkbox. The 'Runtypes & Repeat' section includes a 'Remarks:' field. The 'Runtypes & Repeat' section includes a 'Mail view settings' section with a 'Group By Date:' field and 'Enable' and 'Disable' radio buttons. The 'Enable' radio button is selected.

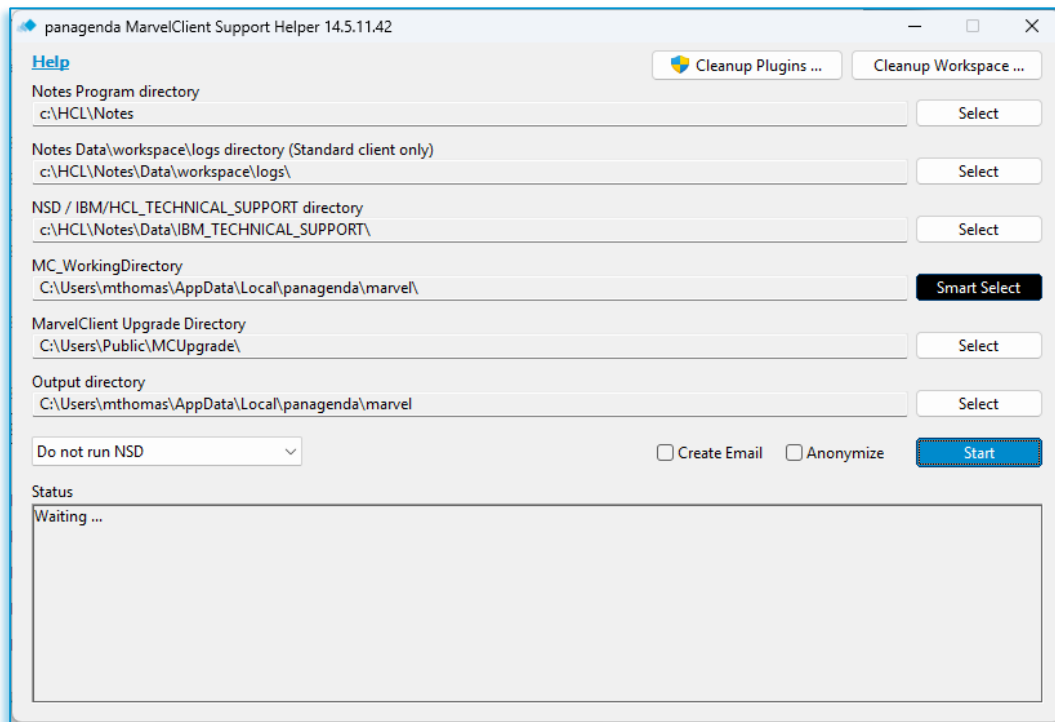
# Recap 2025 – MarvelClient Upgrade



- Faster publishing
- Centrally stored and reusable Keyfile, Private/Public Key, Custom logos, and more
- (V14) Cinema Slides via Online Update; customizable
- Publishing to a central location (i.e. UNC path)
- Archiving to a central location including change documentation
- Much faster indexing of installers
- Windows Defender Optimization Options
- DisallowRun and RestrictRun improvements
- Prediction of upgrade target users
- Smart Workspace Folder Cleanup
- Smart Duplicate Plugin Cleanup

# Recap 2025 – MarvelClient Support Helper

- Improved workspace cleanup preserving custom plugins
- Plugin cleanup support even for 14.5 FP1 and 14.5.1
- Added help link





# Support Stories 2025

## The Birth and Rise of a support ticket

# The Birth of a Ticket

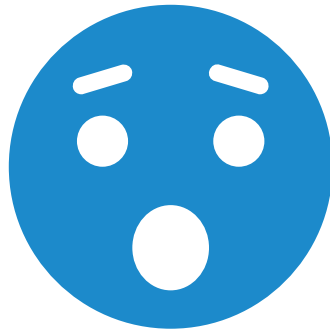
- We got a ticket from a customer (~1k users ; logistics sector)
- Title: **How can we set the „fault reports“ DB using MarvelClient?**
  - Domino Policies are not helping here. because the customer wants to have multiple databases based on device type
    - Laptops
    - Desktops
    - VDI
- We couldn't find any usable settings for this and replied the customer:  
**Please ask HCL, because we don't know how to set this**
- Ticket closed → **so far, so boring!**

# The Rise of a Ticket

- ~1 week later we got a ticket from HCL asking us the exact same question
- **Coincidence:** The ticket arrived us when we had our annually “consulting meeting” → first reactions:
  - They (HCL) should know it ... why are they asking us?
  - We can't help here!
- But it was too late → **Florian (Vogler) was already hunting**

## The Rise of a Ticket – cont.

- ~2h later Florian (Vogler) asked me Christoph (Adler) to test the following notes.ini parameters:
  - **CRASH\_MAILIN\_DB=<MailInDB name of your Fault Reports DB of choice>**
  - **CRASH\_DONT\_PROMPT=1**
  - **CRASH\_NO\_COMMENTS=1**
- Try opening the nsenddiag.exe in notepad++







# Support Stories 2025

IDVault fails when it comes to Cluster failover

# IDVault fails when it comes to Cluster failover



- We got a ticket from a customer (>3k users ; defense sector)
- Title: **MarvelClient Roaming doesn't work when cluster failover**
  - Notes can't be started on Citrix when cluster failover happened
  - MarvelClient Roaming seems not to be working correctly
  - The user ends up on the Notes configuration wizard
  - **URGENT → all Citrix users are affected**
- We then jumped on a call with the customer and started the troubleshooting and solving!

# IDVault fails when it comes to Cluster failover



- Troubleshooting says (according to log.xml)
  - MarvelClient Roaming worked
  - Users ID file couldn't be downloaded from the IDVault → Server is not reachable
  - IDVault didn't download the ID from the cluster partner (although this one is an official replica created with "ID Vaults > Manage" tool
  - ID file is not in the "Roaming set" because NFL (Notes Federated Login == SAML) is in use
  - HCL was in that call and admitted "yes, that is not working" and "most probably that will not change"
- We brought that info home (to panagenda) and discussed it with our brilliant developers Julian (Robichaux) and Markus (Seitz)
  - We've asked them "Can we solve that by simply taking care about the IDVault download in such a situation?"

→ Yes 😊

# IDVault fails when it comes to Cluster failover



- **Solution**

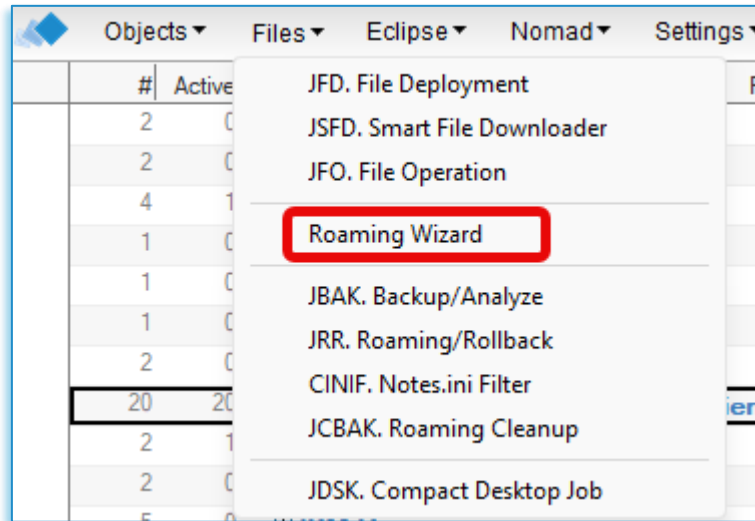
- MarvelClient now takes care of the IDVault download (also in case of NFL/NSL) if IDVault fails on its own
- Due to MarvelClient, the cluster.ncf file will be written earlier to the data folder and synced into the “Roaming Set”
- A general cluster.ncf file must be available for the initial start of a new user here:
  - C:\ProgramData\HCL\Notes\Data\Common\cluster.ncf

A 3D rendering of white, rectangular steps leading upwards from the bottom left towards the center. A white ladder with blue accents is leaning against the first step on the left. The background is a light, hazy blue gradient.

# Sneak Peek for 2026

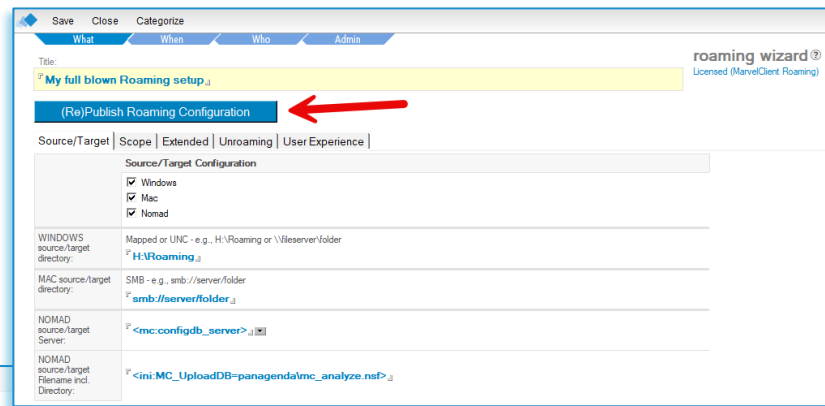
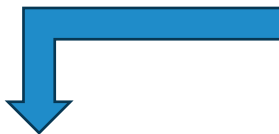
# THE NEW MarvelClient Roaming Wizard

- New option in our Files section of the menu bar.



# THE NEW MarvelClient Roaming Wizard

- 1 Click – All actions done



Full MarvelClient Roaming Experience									
20	20	875	TP	★	20251024T155035Z0012				NOMAD ROAMING
		875	DLC WM	★	20251021T103330Z0056				Roam latest backup from mc:network_directory (if newer) limited replica
		875	DLC W	★	20251019T140653Z0042				Set ini:MC_NetworkDirectory to H:\Notes_Backup - Windows only
		875	DL M	★	20250901T084720Z0038				Set ini:MC_NetworkDirectory to smb://hostname/sharename - MacOS only
		400.002.000	DLC WM	★	20251024T124512Z0012				Roaming Cleanup
		2.100.000.000	DLC WM	★	20250901T100304Z0024				Enable Progress Bar Display for Client Shutdown
		2.100.000.000		★	20251024T155030Z0010	(1/1)			INI: MC_Setup_RunTemplateUpgradeOnce / Ensure ID-File download between major releases
		2.100.000.000	DLC WM	★	20250901T084914Z0014				ROAMING: Enable to roam unreadmarks
		2.100.000.000	DLC W	★	20251024T155025Z0012				Run MCSshutdown.exe
		2.100.000.000	DLC WM	★	20250901T085016Z0018				Set mc:DXL Export/Import Roaming
		2.100.000.025	DLC WM	★	20251021T103003Z0010				Agent: DXL RAW Export
		2.100.000.025	DLC WM	★	20251019T140519Z0008				Agent: DXL RAW Import
		4,500.000.750	DLC WM	★	20251019T135602Z0324				Backup to mc:network_directory (limited replica, including Eclipse Settings)
		n/a		★	20251019T100847Z0012				NOMAD ROAMING BACKUP: backup all entries
		n/a		★	20251019T100847Z0014				NOMAD ROAMING RESTORE: exclude selected entries
		n/a		★	20250901T083640Z0082				ROAMING: Exclude ini-Entries Directory, SharedDataDirectory and more
Migration from Notes Roaming User									
		2.100.000.000	DLC WM	★	20250901T100707Z0040	(1/1)			INI: Disable Notes Roaming User and cleanup
		2.100.000.000	DLC WM	★	20250901T100010Z0035	(2/2)			INI: DISABLE_WORKSPACE_ROAMING=1
		2.100.000.000	DLC WM	★	20250901T095925Z0004				INI: Suppressing Unroaming Message Box
		2.100.000.000	DLC WM	★	20250901T100657Z0039	(2/2)			MC: desktop_wib_readfrombookmark_shutdown=true

# General Availability

## Q1 2026

# QUESTIONS?



Your Feedback Matters to Us



SCAN ME

# THANK YOU!



Your Feedback Matters to Us



SCAN ME