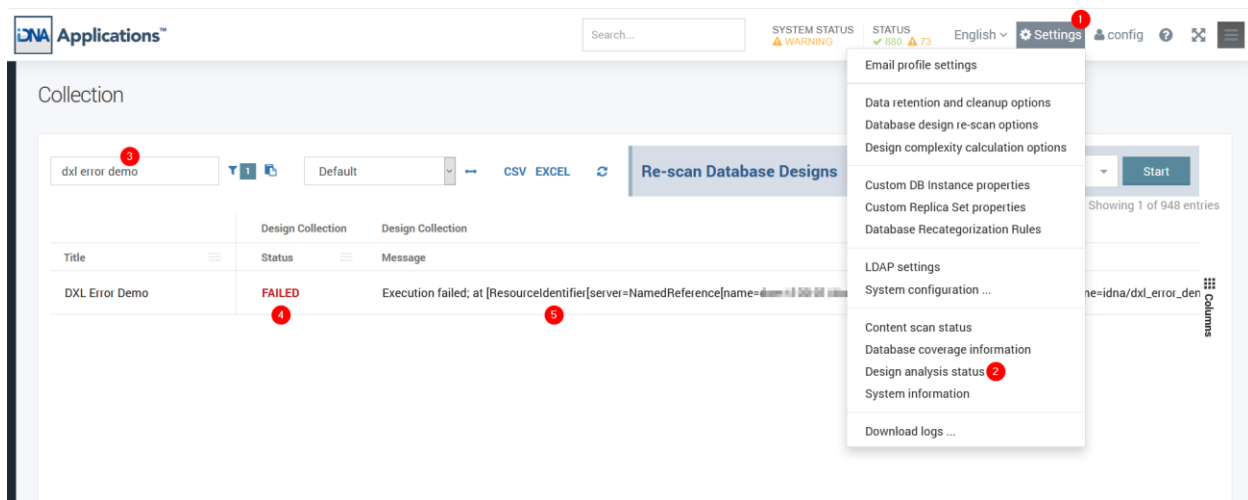


# Troubleshooting DXL Export Errors

This document will describe how to solve the most common errors that occur during the DXL export of design elements in a Notes/Domino database. The DXL exporter is a feature of Notes/Domino that displays design elements in XML format. panagenda iDNA Applications utilizes this functionality to import design data.

## Finding DXL issues in iDNA Applications

To see a list of databases and their design scan status, click on “Settings” in the menu bar (1), then select the “Design analysis status” (2) menu option. On the collection page, you can use the search field (3) to look for your database by title, file name, Replica ID, etc.



If a database has a design collection status of “FAILED” (4), that can have several reasons. Please see the document [Troubleshooting Design Collection Issues](http://kbase.panagenda.com/) in the iDNA Applications Knowledge (<http://kbase.panagenda.com/>).

A DXL issue can be identified by the design collection message (5) starting with “Execution failed” and an XML tag of “DXLExporterLog”. From here, you can simply copy the error message and paste it into the text editor of your choice to see the details of the message.

## Analyzing the DXL Issue

Having exported the iDNA Applications error to an excel file, we illustrate the troubleshooting using one particular application that contains an error:

Application name: **DemoApp**: with a filename **test/DemoApp.nsf** on Server **“Acme/Example”**

### Error message:

```
"Execution failed; at [ResourceIdentifier[server=NamedReference[name=Acme/Example],
database=NamedReference[name=test/DemoApp.nsf]]]; exporterLog=[<?xml version='1.0'?>
<DXLExporterLog>
    <error id='7112'>Error occurred during processing of note ID 0x39A</error>
    <warning id='7034'>Inconsistent data encountered %s</warning>
    <error>DXL exporter operation failed</error>
</DXLExporterLog>]"
```

### Using the Note ID given, find the particular Note in the Application.

To do this you will need to use a tool that can list Notes IDs in databases. You may have tools available from your organization.

Here is a collection of free tools that can provide this functionality:

**[NotesPeek](#)**: *a free tool maintained by HCL*

**[ScanEZ Lite](#)**: *a free version of the Ytria's ScanEZ tool*

**[Noteman](#)**: *a free version of MartinScott's Noteman tool*

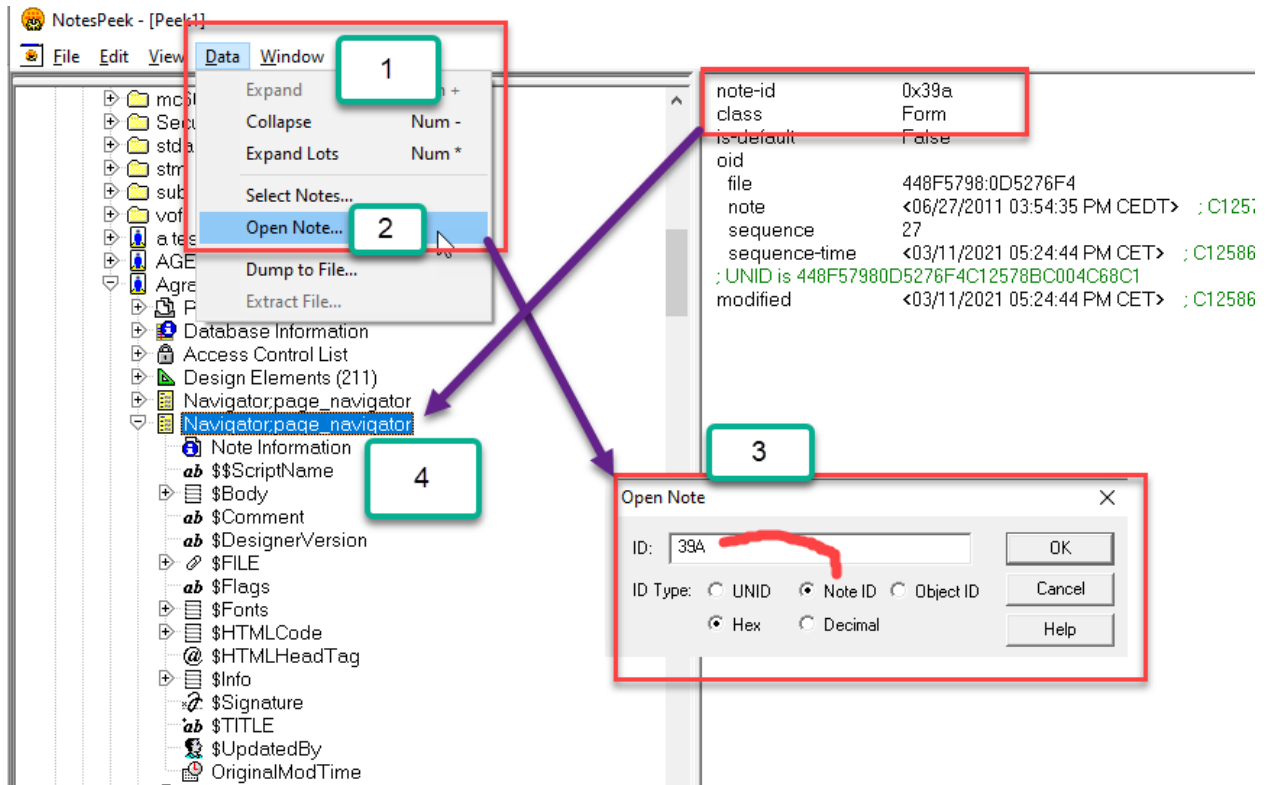
The Domino Administrator client also has the ability to search by Noted ID, but the functionality is quite limited.

## Identifying a Note using Notespek

Open the database on the correct server. Search for the NoteID from the error.

Select Data -> Open Note-> Note ID and fill in the dialog with the hex value of the Note (minus the Hex Notation 0x)

From here, you will see that the design note is titled "Navigator".



## Identifying a Note using ScanEZ

Open the database on the correct server. Search for the NoteID from the error.

Choose Search -> Search By NoteID -> Enter the hex value of the NoteID that you got from the DXL Error. ScanEZ lite will find the note and ask you to continue. It will then open the Note for you.

From here, you will see that the design note is titled “Navigator”.

The screenshot shows the ScanEZ software interface with several key elements highlighted by red boxes and arrows:

- 1**: A red box highlights the 'Search' menu in the top toolbar.
- 2**: A red box highlights the 'Search by NoteID' option in the search menu.
- 3**: A red box highlights the 'Confirmation' dialog box that appears after a search, with the text '1 documents will be added to the selected 'My Selection'. Do you want to continue?' and 'Yes'/'No' buttons.
- 4**: A red box highlights the search results table, specifically the entry for 'page\_navigator' with a NoteID of 'h39A'.

The search results table is as follows:

ID	Value	Modification date	Is Su...	Is En...	Is Sig...	Is Pro...	Size ...
12	page_navigator	03/11/2021 11:24:44 AM					1
13	[rich text cannot be viewed in list] CRC: 71A6C	03/11/2021 11:24:44 AM					1,35
5	ML	03/11/2021 11:24:44 AM					
10	8.5.3	03/11/2021 11:24:44 AM					
2	[com.objectplanet.gui.Table.jar] - size: 46 bytes	03/11/2021 11:24:44 AM					12
9	C34WQ						
11	[rich text cannot be viewed in list]						4
3	[rich text cannot be viewed in list]						1
8	<style type="text/css"> a:m...						44
6	[rich text cannot be viewed in list]						2
14	CN=terri warren/O=panagenda						1,31
4	Navigator;page_navigator						2
7	CN=terri warren/O=panagenda						2
1	08/12/2009 09:47:51 PM						

The 'Search by NoteID' dialog box shows the following options:

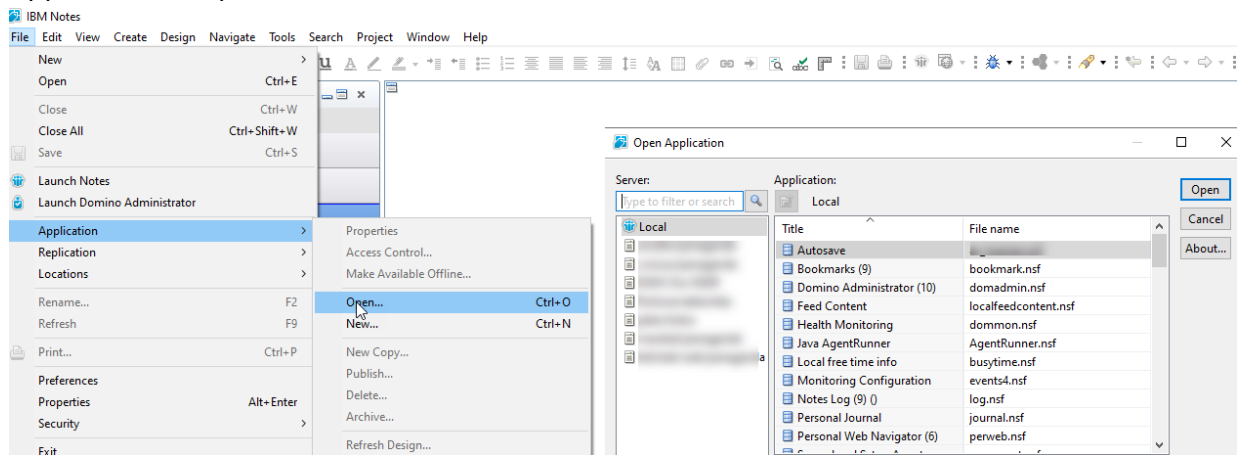
- Enter the NoteID (or NoteIDs) - (Examples: Decimal=678, Hex...): **h39A**
- Put Search Results in:
  - New 'My Selection' (Create)
  - Existing 'My Selection' (Append): My Selection #1
  - Existing 'My Selection' (Replace): My Selection #1
- Title Options:
  - Information to Display in Selection Tree Titles:
    - Default Title
    - Note Info Value
    - Field Info/Value Combination
    - Formula
    - Value from View/Folder

## Remediation via Template or Database

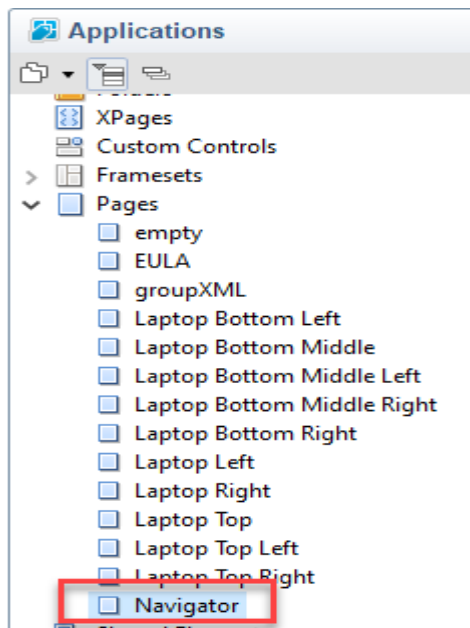
Now that we have identified the Note, it is worth considering whether this design document needs to be modified in the database directly or the Design Template can be used to solve the issue in several databases who might be affected by this issue at once.

### A. Open that database in the Designer Client

Application -> Open -> Select the Server and Filename



### B. From here, navigate to the Design document we identified. In our example case NoteID 0x39 is the Design document "Navigator" is "Page"



- C. Select the category “Page”, double click and you will be presented with more information about those Page Design Documents.

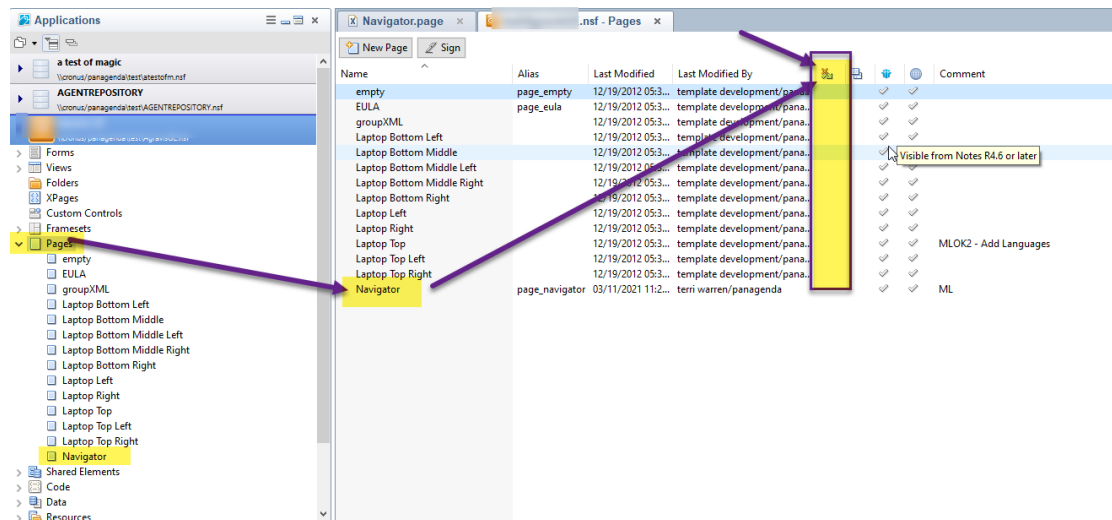
From here you will be able to identify if the developers can modify the template to fix these issues, or whether they will have to modify this document in the note directly.

If a database inherits the design from a template, then **ALL** the design elements that **DO NOT** have a check in the column highlighted in yellow below will come from the template.

Therefore, if you look at a design element and there's **no check** in that column, you can modify the design element *in the template* and it will get the changes the next time the database design is refreshed. Any design element that **HAS** a check in this column has to be modified directly *in the database* because the design does not come from the template.

To Summarize:

check mark in that column == modify the template  
no check mark in the column == modify the database



**\*\*\* NOTE \*\*\*** This is assuming that the database inherits design from a template. If not, you will always have to modify the database.

## Fixing the DXL Error

It is recommended that these actions are performed by a developer who can estimate and evaluate the impact of the performed changes.

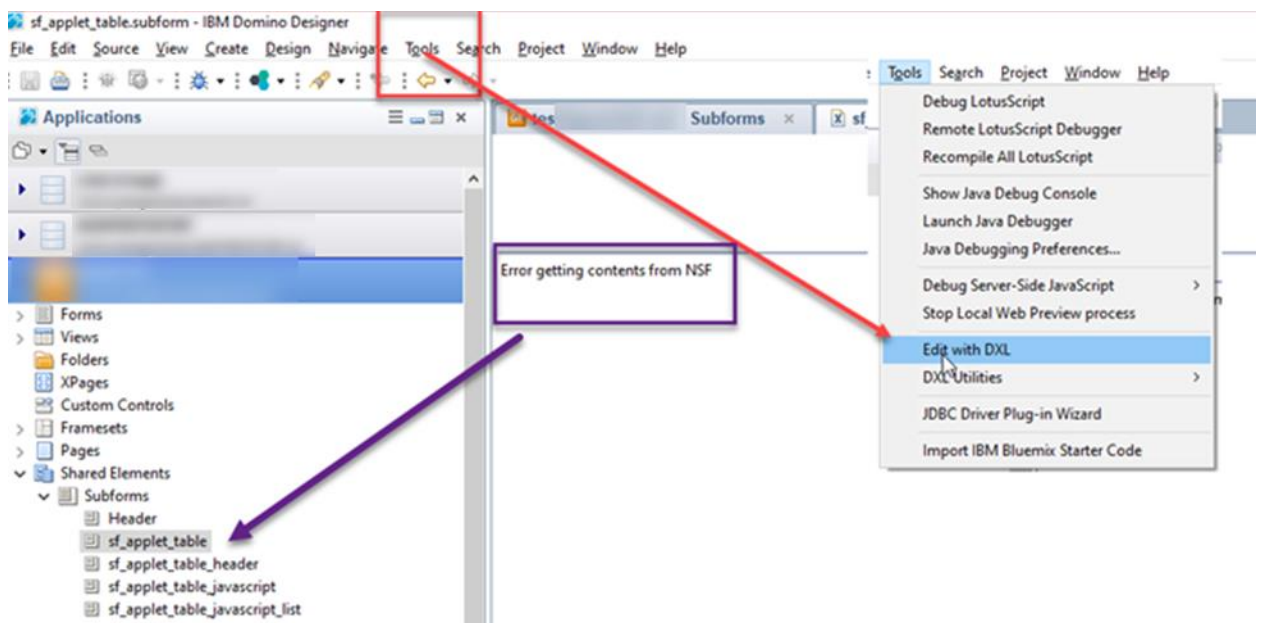
The most common reason for errors occurring during the DXL export are inconsistencies in document fields. In the vast majority of cases we encounter, simply re-saving the document is enough to solve this inconsistency.

A simple way to do this is adding and deleting a space in the source of the Design Note and saving the document.

## Verifying the fix

A quick way to test that the Export issue has been addressed from within the Designer client.

- Select the Note we identified
- Open the Tools menu and select “Edit With DXL”
- If the export worked, the fix was successful. If not, you will see the message “Error getting contents from NSF”



**Note:** Depending on your Notes Client version, you might not be able to reproduce the error that occurs when iDNA uses the DXL exporter. The final verification always has to be done by re-scanning the database in iDNA Applications.

If the problem persists after re-saving the document, we advise to contact HCL support.