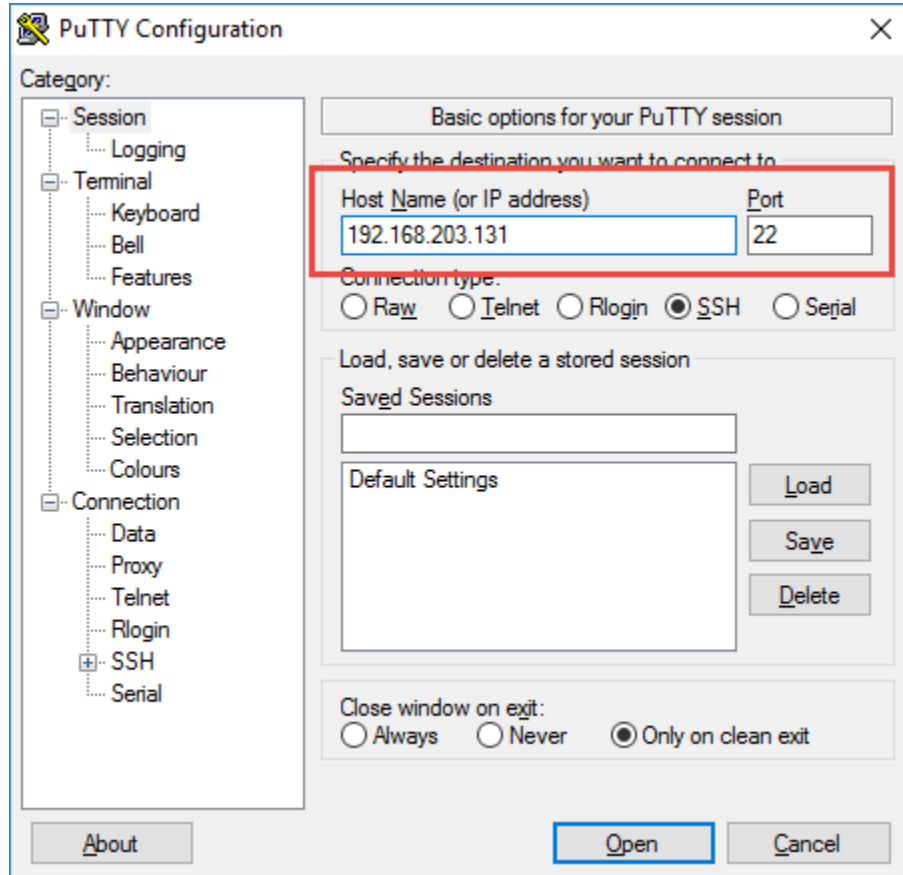


Remote Appliance Access (VNC)

In order to enable access to the Linux GUI, a VNC server is pre-installed on the virtual appliance. To start the VNC server, please follow these steps:

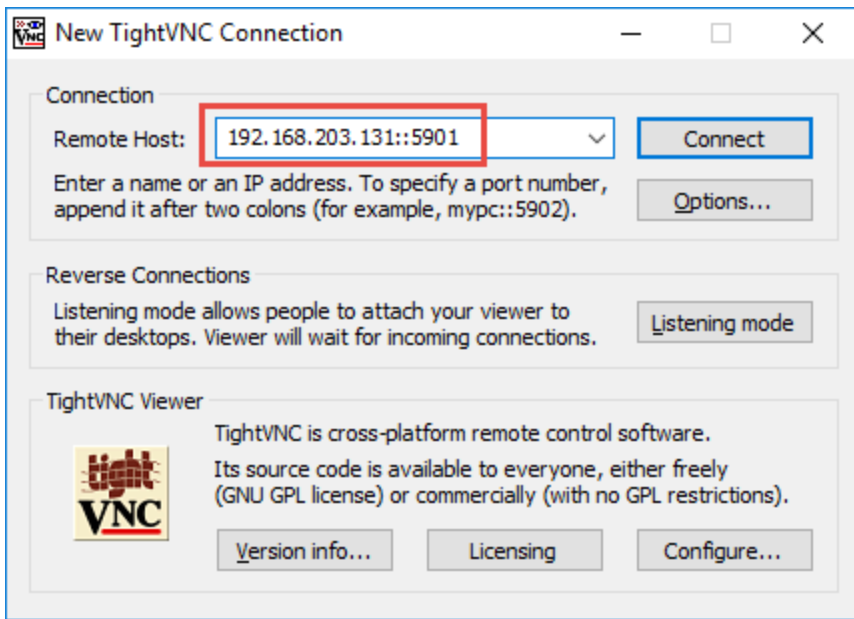
1. Start a SSH connection to the appliance. For this, a tool such as PuTTY is needed (<http://www.chiark.greenend.org.uk/~sgtatham/putty/download.html>):



2. Log into the appliance with the user **root**
3. To start the VNC server, enter the command **vncserver**:

```
root@localhost ~]# vncserver
New 'localhost.localdomain:1 (root)' desktop is localhost.localdomain:1
Starting applications specified in /root/.vnc/xstartup
Log file is /root/.vnc/localhost.localdomain:1.log
```

Now you can access the appliance's Linux GUI using a VNC client, such as Tight VNC Client (<http://www.tightvnc.com/download.php>):



The default connection password is **config**. It can be changed by issuing the command **vncpasswd** in PuTTY.

Note

The VNC server is merely a tool to help in exceptional situations where the VM console cannot be accessed otherwise. Due to security considerations it is purposely configured for manual startup only.