

# Setup - Teams Analytics (TA)

- [Setup Requirements - TA](#)
- [Basic Setup - TA](#)
- [Starting the Virtual Appliance - TA](#)
- [OfficeExpert Web Interface - TA](#)

All panagenda knowledge base contents can be exported as PDFs (including all child pages - see instructions further below). We recommend the following parent pages to export entire, pre-processed guides:

- [OfficeExpert Requirements Guide](#)
- [OfficeExpert Setup Guide - for all Modules](#)
- [OfficeExpert Setup Guide - for Teams Analytics only](#)
- [OfficeExpert Setup Guide - for Ops Analytics only](#)

## How to export contents or entire guides as PDF:

All panagenda knowledge base contents can be exported as visually appealing PDF files.

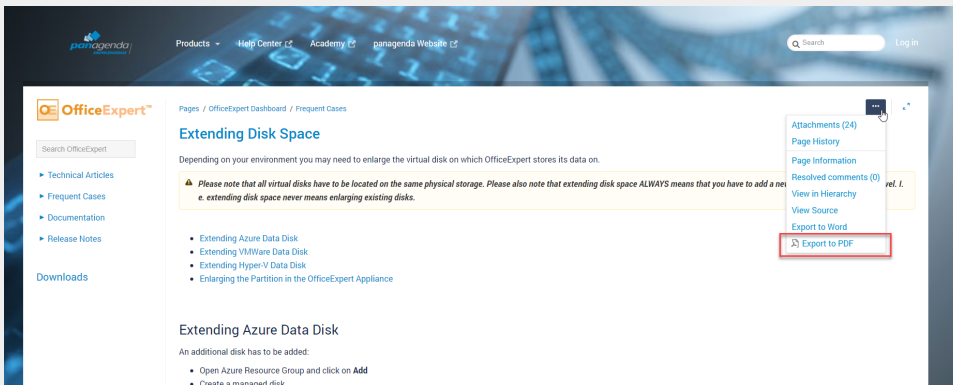
To export articles, please carry out the following steps:

1. Navigate to the page you want to page you want to export.

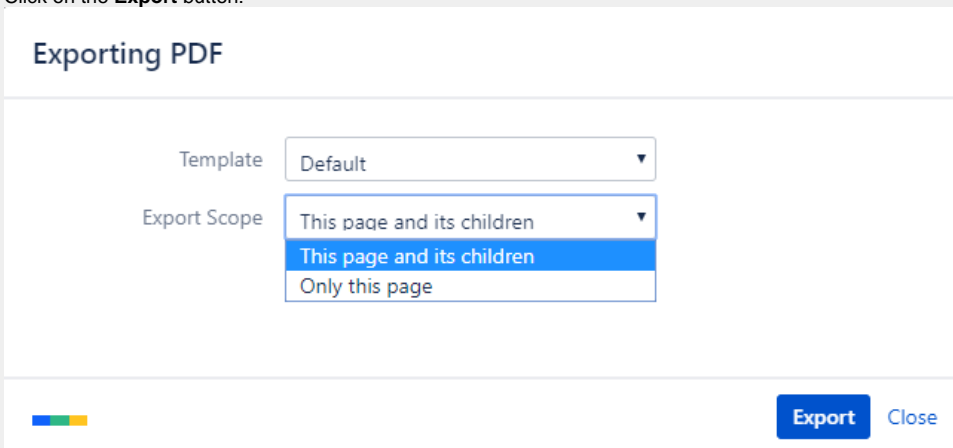


Please note: There will also be an option to include all child pages of the page to the PDF export!

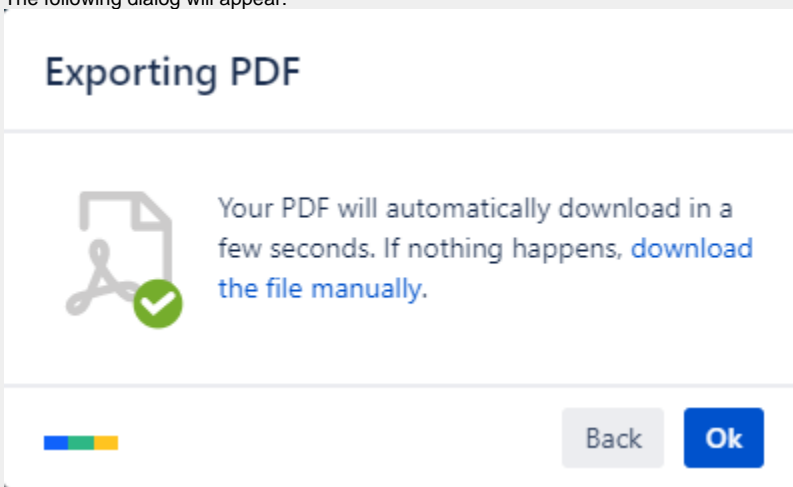
At the right hand top corner of the page, click on the ... icon and select **Export to PDF** from the context menu:



2. Select the **Default** template and the export scope:  
**This page and its children** in case you want to include all sub-pages  
**Only this page** in case you do NOT want to export all sub-pages  
Click on the **Export** button:



3. The following dialog will appear:



4. You will find a document including a cover page, a table of contents, page numbers and so on (usually) in your Download folder:

The image shows a PDF document with the following structure:

- Page 1 (Cover):**
  - Header: panagenda logo
  - Title: **Extending Disk Space OfficeExpert**
  - Footer: panagenda Knowledge Base Export
- Page 2 (Table of Contents):**
  - Header: panagenda logo
  - Title: Table of Contents
  - Table of Contents:
    - Extending Azure Data Disk ..... 3
    - Extending VMWare Data Disk ..... 6
    - Extending Hyper-V Data Disk ..... 8
    - Enlarging the Partition in the OfficeExpert Appliance ..... 10
    - DISCLAIMER ..... 17
    - Limitation of liability for external links ..... 17
  - Footer: panagenda Kbase PDF Export: 11/30/2018 2
- Page 3 (Extending Azure Data Disk):**
  - Header: panagenda logo
  - Text: Depending on your environment you may need to enlarge the virtual disk on which OfficeExpert stores its data on.
  - Warning box: **Please note that all virtual disks have to be located on the same physical storage. Please also note that extending disk space ALWAYS means that you have to add a new disk on virtual hardware level. I. e. extending disk space never means enlarging existing disks.**
  - List of links:
    - Extending Azure Data Disk
    - Extending VMWare Data Disk
    - Extending Hyper-V Data Disk
    - Enlarging the Partition in the OfficeExpert Appliance
  - Section: **Extending Azure Data Disk**
  - Text: An additional disk has to be added:
    - Open Azure Resource Group and click on **Add**
    - Create a managed disk
    - populate all relevant fields based on your setup:
  - Footer: panagenda Kbase 3
- Page 4 (Create managed disk):**
  - Header: panagenda logo
  - Breadcrumbs: Home > Resource group > panagenda > Marketplace > Managed Disk > Create managed disk
  - Title: **Create managed disk**
  - Buttons: Back, Tags, Review, create
  - Text: Select the disk type and size needed for your workload. Azure Disks are designed for 99.99% availability. Azure Managed Disks are encrypted by default, using Storage Services Encryption. [Learn more about disks](#)
  - Section: **Project details**
    - Select the subscription to manage deployed resources and costs. Use resource groups like folders to organize and name your resources.
    - Subscription: OS Deployment Tests
    - Resource group: panagenda
    - Clear new
  - Section: **Disk details**
    - Disk name: panagenda
    - Region: Europe West Europe
    - Availability zone: None
    - Source type: None
    - Size: 256 GB
    - Standard HDD
    - Storage IOPS
  - Text: **Afterwards open the VM and click on Disks > Add data disk.**
  - Footer: panagenda Kbase 4