

# Monitoring Azure Sync Server

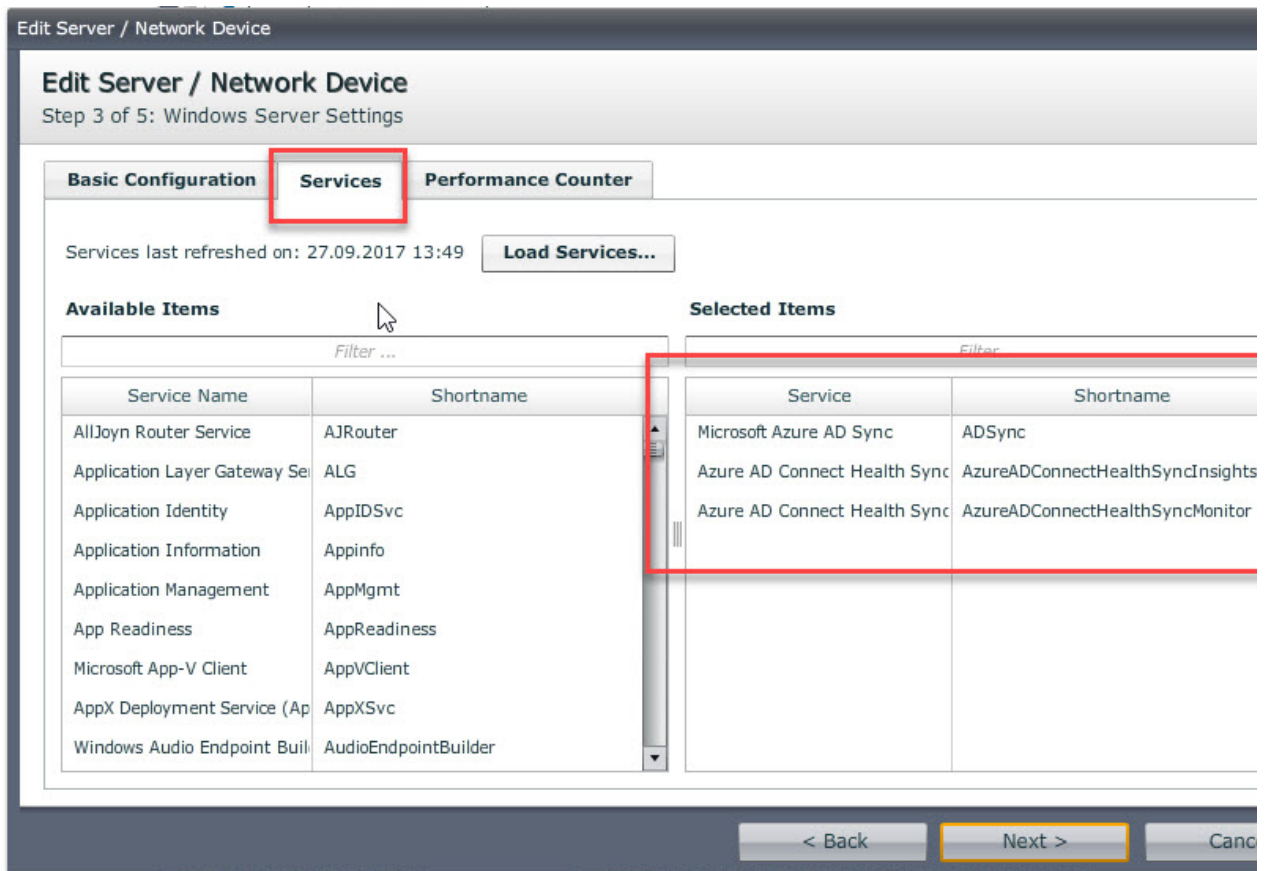
Azure AD Sync Server is used whenever an AD needs to get synced with Office365 and Azure.

Monitoring this Server is therefore pretty critical.

With GreenLight you need to configure only 2 Sensors in order to cover 1-n Sync Server (usually 2 Sync servers are used - incl. a hot standby one)

## Configuration

- Make sure that you have an authentication profile configured
- Create a server entry and make sure you have chosen "Windows" and select "OS Services, PerfCounters, Powershell)
- Assign the previous created authentication profile to this host
- click on "Load Services" and Load Performance counters" for retrieving all elements
- select the following three services



- select the following perfcunters



- save/close
- configure a Windows Service Sensor
  - add the Sync Host(s) and leave the Settings page unchanged
- configure a Performance Counter Sensor
  - add the Sync Host(s) and leave the Settings page unchanged

Run the Sensors manually or wait until they get triggered.

The result should be something like this

Sensor Results

Azure Sync - PerfCounter

Azure Sync Services

Measurement Details

Statistics

List View

Favorites Only

Key	Value
greenlight.osservice.missing	
greenlight.osservice.missing_count	0
greenlight.osservice.monitored	ADSync,AzureADConnectHealthSyncMonitor,AzureADConnectHea
greenlight.osservice.monitored_count	3
greenlight.osservice.running	ADSync,AzureADConnectHealthSyncInsights,AzureADConnectHea
greenlight.osservice.running_count	3
greenlight.osservice.service.ADSync.display_name	Microsoft Azure AD Sync
greenlight.osservice.service.ADSync.running	1
greenlight.osservice.service.ADSync.started	1
greenlight.osservice.service.ADSync.status	0
greenlight.osservice.service.ADSync.status_name	OK
greenlight.osservice.service.AzureADConnectHealthSyncInsights.display_name	Azure AD Connect Health Sync Insights Service
greenlight.osservice.service.AzureADConnectHealthSyncInsights.running	1
greenlight.osservice.service.AzureADConnectHealthSyncInsights.started	1
greenlight.osservice.service.AzureADConnectHealthSyncInsights.status	0
greenlight.osservice.service.AzureADConnectHealthSyncInsights.status_name	OK
greenlight.osservice.service.AzureADConnectHealthSyncMonitor.display_name	Azure AD Connect Health Sync Monitoring Service
greenlight.osservice.service.AzureADConnectHealthSyncMonitor.running	1
greenlight.osservice.service.AzureADConnectHealthSyncMonitor.started	1
greenlight.osservice.service.AzureADConnectHealthSyncMonitor.status	0
greenlight.osservice.service.AzureADConnectHealthSyncMonitor.status_name	OK
greenlight.osservice.started	ADSync,AzureADConnectHealthSyncInsights,AzureADConnectHea
greenlight.osservice.started_count	3
greenlight.osservice.stopped	
greenlight.osservice.stopped_count	0

Sensor Results

Azure Sync - PerfCounter

Azure Sync Services

Measurement Details

Statistics

List View

Favorites Only ☐

	Key	
★	greenlight.perfcounter.counter.logicaldisk(_total)._disk_read_time	0
★	greenlight.perfcounter.counter.logicaldisk(_total)._disk_time	0
★	greenlight.perfcounter.counter.logicaldisk(_total)._disk_write_time	0
★	greenlight.perfcounter.counter.logicaldisk(_total)._free_space	7
★	greenlight.perfcounter.counter.logicaldisk(_total)._idle_time	9
★	greenlight.perfcounter.counter.logicaldisk(_total).avg._disk_bytes/read	0
★	greenlight.perfcounter.counter.logicaldisk(_total).avg._disk_bytes/transfer	5
★	greenlight.perfcounter.counter.logicaldisk(_total).avg._disk_bytes/write	5

As you know, ALL of this data can be used for charting AND Alerting purpose !

Check out Microsoft articles in order to identify threshold levels for these key/values