

Setup Guide - TrueDEM



Welcome to panagenda TrueDEM! This guide will help you to get started.

- [Getting Started with TrueDEM](#)
- [TrueDEM Portal - Access](#)
- [Insider Channel Setup](#)
- [TrueDEM Manager](#)
- [Endpoint Manager Deployment \(Intune\)](#)
- [Enabling Customer Subnet Data \(optional\)](#)
- [AppLocker - Allow Rule](#)
- [TrueDEM App Roles](#)
- [Remove TrueDEM components in an Organization](#)

All panagenda knowledge base contents can be exported as PDFs (including all child pages - see instructions further below).

i If you export this page as PDF, you will obtain an optimized print version of the TrueDEM Setup Guide.

How to export contents or entire guides as PDF:

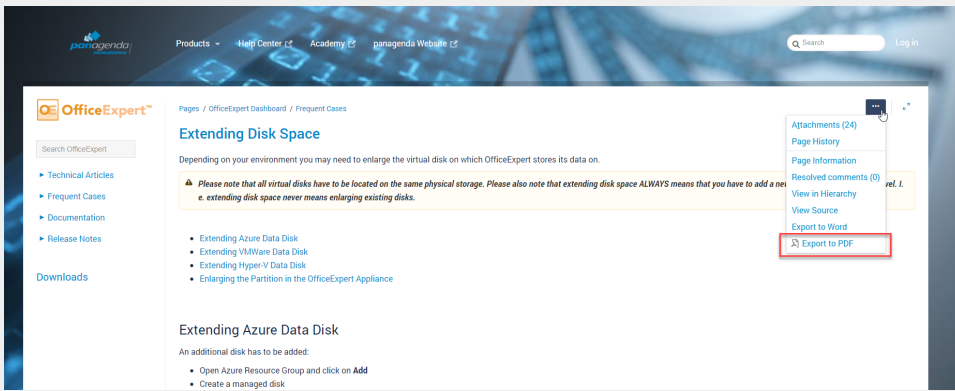
All panagenda knowledge base contents can be exported as visually appealing PDF files.

To export articles, please carry out the following steps:

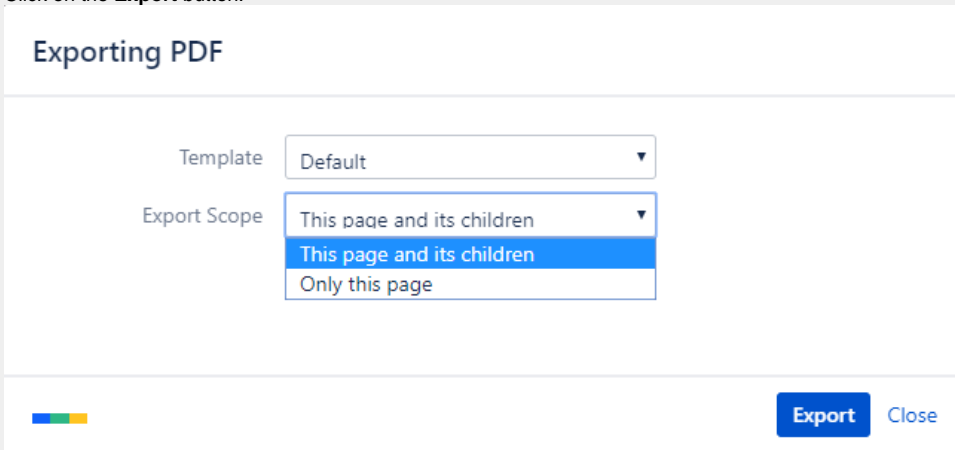
1. Navigate to the page you want to page you want to export.

i Please note: There will also be an option to include all child pages of the page to the PDF export!

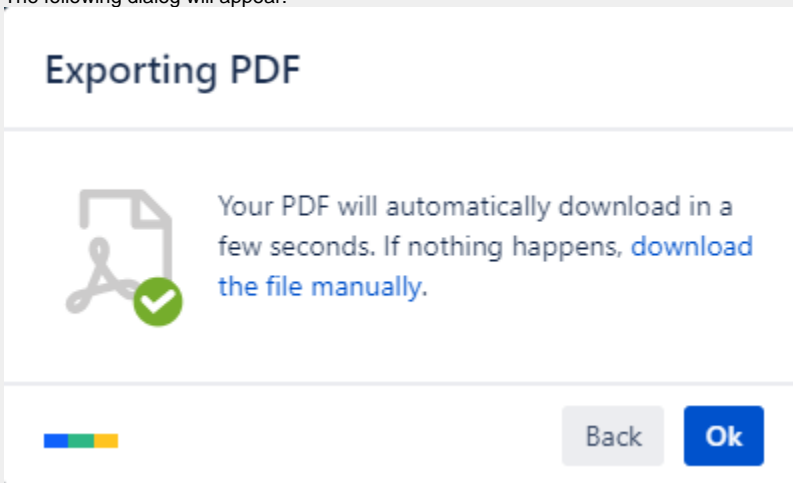
At the right hand top corner of the page, click on the ... **icon** and select **Export to PDF** from the context menu:



2. Select the **Default** template and the export scope:
This page and its children in case you want to include all sub-pages
Only this page in case you do NOT want to export all sub-pages
Click on the **Export** button:



3. The following dialog will appear:



4. You will find a document including a cover page, a table of contents, page numbers and so on (usually) in your Download folder:

The image shows a PDF document with a blue header and footer. The header contains the panagenda logo and the title 'Extending Disk Space OfficeExpert'. The footer contains 'panagenda Knowledge Base Export'. The main content area is divided into two pages. The first page is a 'Table of Contents' with the following entries: 'Extending Azure Data Disk' (3), 'Extending VMWare Data Disk' (6), 'Extending Hyper-V Data Disk' (8), 'Enlarging the Partition in the OfficeExpert Appliance' (10), 'DISCLAIMER' (17), and 'Limitation of liability for external links' (17). The second page is a 'Create managed disk' form with fields for 'Subscription', 'Resource group', 'OS Deployment Type', 'Disk name', 'Region', 'Availability zone', 'Source type', and 'Size'. The form is partially filled with values: 'panagenda', 'panagenda', 'Europe West Europe', 'None', 'None', and '256 GB'. Below the form, there is a note: 'Afterwards open the VM and click on Disks > Add data disk.' The footer of the PDF contains 'panagenda Kbase' and page numbers 3 and 4.

panagenda

Extending Disk Space OfficeExpert

panagenda Knowledge Base Export

panagenda Kbase PDF Export: 11/30/2018 2

panagenda

Depending on your environment you may need to enlarge the virtual disk on which OfficeExpert stores its data on.

Please note that all virtual disks have to be located on the same physical storage. Please also note that extending disk space ALWAYS means that you have to add a new disk on virtual hardware level. I. e. extending disk space never means enlarging existing disks.

- Extending Azure Data Disk
- Extending VMWare Data Disk
- Extending Hyper-V Data Disk
- Enlarging the Partition in the OfficeExpert Appliance

Extending Azure Data Disk

An additional disk has to be added:

- Open Azure Resource Group and click on **Add**
- Create a managed disk
- populate all relevant fields based on your setup:

panagenda Kbase 3

panagenda

Create managed disk

Home > Resource group > panagenda > Marketplace > Managed Disk > Create managed disk

Details | Tags | Review > create

Select the disk type and size needed for your workload. Azure Disks are designed for 99.99% availability. Azure Managed disks protect your data at rest, by default, using Storage Services Encryption. [Learn more about disks.](#)

Project details
Select the subscription to manage deployed resources and costs. Use resource groups like folders to organize and name your resources.

Subscription
Resource group

Disk details

Disk name
Region
Availability zone
Source type
Size
Standard HDD
Storage I/O

Afterwards open the VM and click on **Disks > Add data disk.**

panagenda Kbase 4