

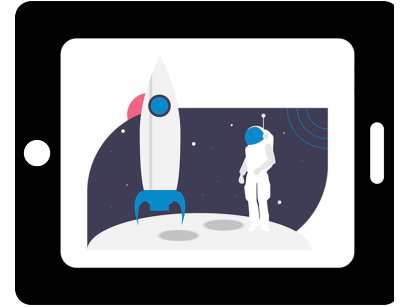
# MarvelClient for Nomad

The world's fastest and leading client management solution panagenda MarvelClient is also available for all HCL Nomad clients: iOS, Android, and Web. MarvelClient is fully integrated into HCL Nomad, and MarvelClient (MC) for Nomad offers a **comprehensive feature scope free of charge**.

HCL Nomad clients can be managed with all MarvelClient editions, including the free [MarvelClient Essentials](#)!

panagenda MC for Nomad allows you to:

- **Centrally manage every aspect of HCL Nomad** - including Recent Apps, local settings, Location/Connection documents, and more - without end-user interaction.
- **Ensure properly set up clients from the first start of Nomad**. End-users can be productive immediately without having to think about settings or how to find their Domino applications.
- **Apply settings persistently**, which makes sure Nomad stay configured correctly. This also means a simple restart of the app will automatically fix mis-configurations by the end-user without the need for help desk to get involved.
- **Continuously collect detailed analytics information** about all aspects of deployed Nomad installations, operating systems, and hardware.



[Further information about HCL Nomad can be found here.](#)

---

## Getting Started

You already run MarvelClient? Great, you can start setting up your [MC Actions](#)! Since MC is fully integrated into HCL Nomad, no further installation is required for the clients!

In case you don't yet manage your Notes clients with MC, just install your [preferred MarvelClient edition](#) on the Domino server as described in the [Setup Guide](#) or in the article [Install Wizard - Getting Started in just a few minutes](#).

Further information on configuring MarvelClient on Nomad clients can be found in the [HCL Nomad and panagenda MarvelClient administration pages](#).

[Go to Install Wizard page](#)

---

## MC for Nomad Documentation Topics

The following topics in the MarvelClient documentation may be especially relevant for HCL Nomad administrators and mobile device managers:

- [About panagenda MarvelClient](#)
- [Configuration Basics - General Fields in the Header Area of Actions](#)
- [Exploring the MarvelClient Analyze database](#)

Please use the search function in the MarvelClient knowledge base to discover further MC for Nomad documentation topics.

[Go to MarvelClient Documentation](#)

---

## MC for Nomad FAQs

Wondering what it's all about? Take a look at frequently asked questions about MC for Nomad - we may have already answered your questions!

[Go to FAQs on MC for Nomad](#)

Are you already using MC for Nomad? Configuration questions can probably be answered in [the documentation](#) or the [Configuration FAQ](#).

---

## MarvelClient Website

MarvelClient takes HCL Nomad and Notes management to a whole new dimension! Find out which edition best meets your expectations.

[Go to MarvelClient Website](#)