

# License Update in Version 2.x (Content Analysis)

With version 2.0 of iDNA Applications a wide range of new features have been implemented. First and foremost the powerful ability to analyze content metadata of entire databases. Along this new feature we have also introduced a new licensing mode for the content analysis: "Per Database Licensing" allows you to pick exactly which databases you want to scan and spend your resources on. This new ability requires a new license file though.

Get started right now with content analysis with **two FREE licenses!**

Please [contact us directly](#) to request your new license file.

You want to know more about content analysis?

Analyzing the content metadata of databases can provide a lot of very valuable information on how to move forward with a database. Equally interesting in modernization and migration scenarios, it surfaces key factors like content age, attachments, encryption, embedded objects and more which may all heavily impact the feasibility of your transformation path.

[Here are a few examples of what you can find:](#)

## Documents

Docs w/Encryption|Signature

57

Docs w/Reader|Author Fields

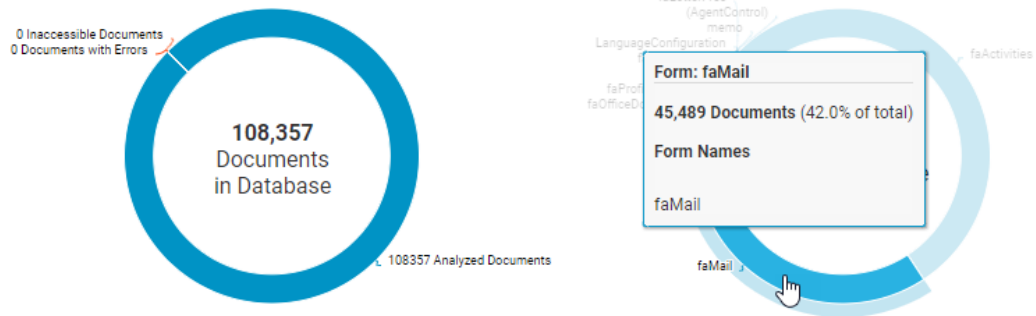
108,332

Docs w/Attachments

40,365

Docs w/Special Objects in RT

99,537



## Creation and Modification History

Newest Document Created

10 months ago

Aug 16, 2019 11:14 AM

Oldest Document Created

15 years ago

Oct 19, 2005 5:53 PM

Latest Document Modification

5 months ago

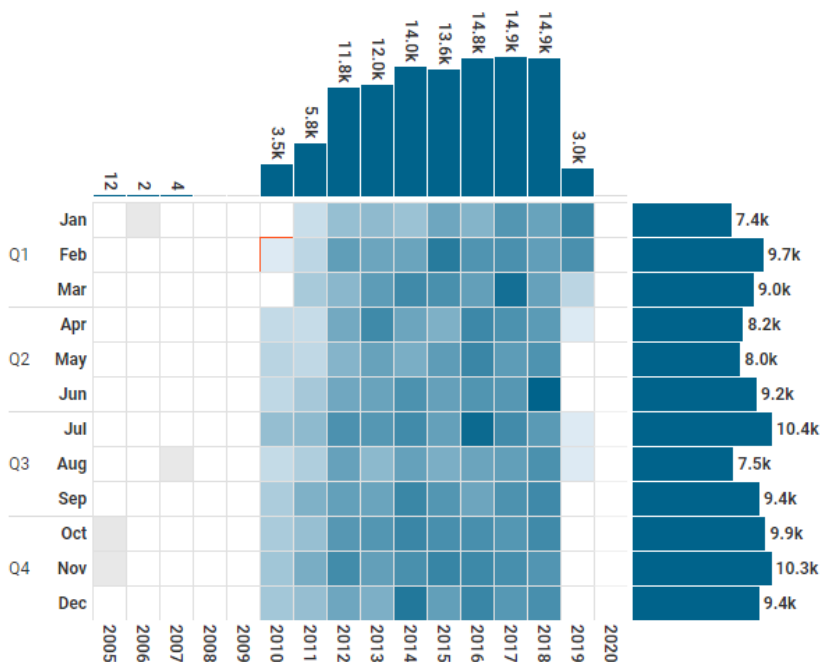
Jan 21, 2020 4:29 PM

Earliest Document Modification

10 years ago

Feb 12, 2010 9:49 AM

## Creation History: Number of Documents



## Identified Objects in Richtext Content

Documents w/Richtext Fields

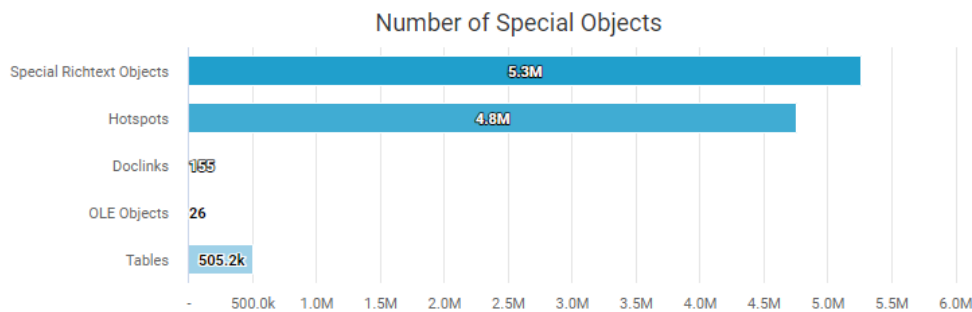
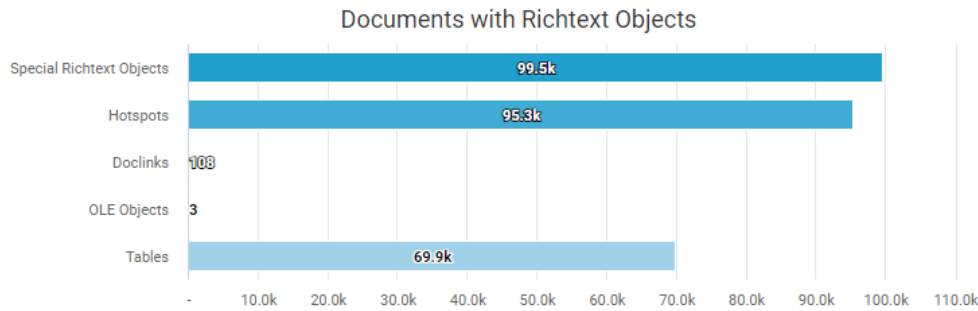
**367,165**

in 107,177 Documents

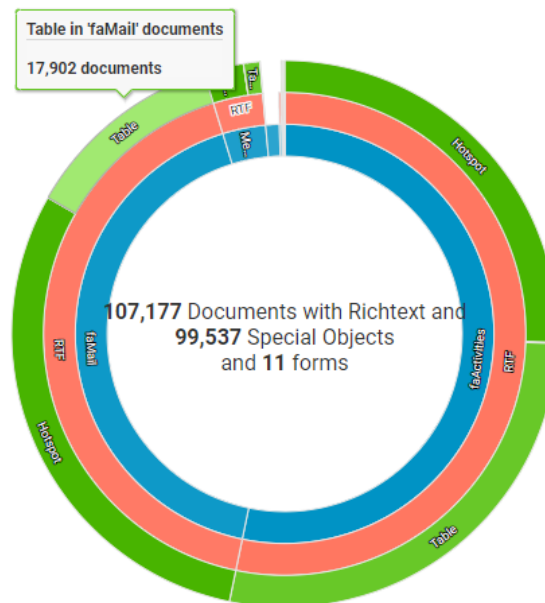
Special Objects

**5,258,045**

in RTF in documents



## Encryption State of Richtext Content by Form



[Contact our team](#) and get your free content analyses for two replica sets of your choice!



The licensing for content analyses is based on the Replica ID. Once a replica set is licensed, all database instances with this same Replica ID may be scanned as often as you choose to.



Please be aware that content analysis is focused on document metadata (e.g. Form, Created, Last Modified) not field content edited by users. This means that it is not possible to search e.g. for documents that contain names, addresses or social security numbers.

## Deploying Your New License

Once you obtained your new licence file, go to **<https://<FQDN or IP>/idna/cfgc#license>** and upload it to panagenda iDNA Applications:

The screenshot shows the iDNA web interface. At the top, there is a navigation bar with the iDNA logo, 'Advanced Settings', 'Portal', 'Content Packages', 'License' (highlighted), and a user icon labeled 'config'. Below the navigation bar, the main content area is titled 'License file informations'. A red error message states 'Your license is invalid.' followed by the instruction 'Please upload a valid license file'. At the bottom, there is a section labeled 'Upload new license file' which includes an information icon, a text input field, a 'Browse' button, an 'Upload' button, and a 'Back' button in the bottom right corner.