


# Setup Guide



Welcome to panagenda MarvelClient! This guide will help you to set up panagenda MarvelClient. It covers installation on the Domino server and on clients for all MarvelClient (MC) editions, including the free offerings [Essentials](#) and [MC for Nomad](#).

- [About MarvelClient](#)
- [BASIC INFORMATION](#)
- [GETTING STARTED](#)
- [ADDITIONAL INFORMATION \(MC\)](#)

All panagenda knowledge base contents can be exported as PDFs (including all child pages - if desired)


 If you export this page as PDF, you will obtain an optimized print version of the MarvelClient Setup Guide.

## How to export contents or entire guides as PDF:

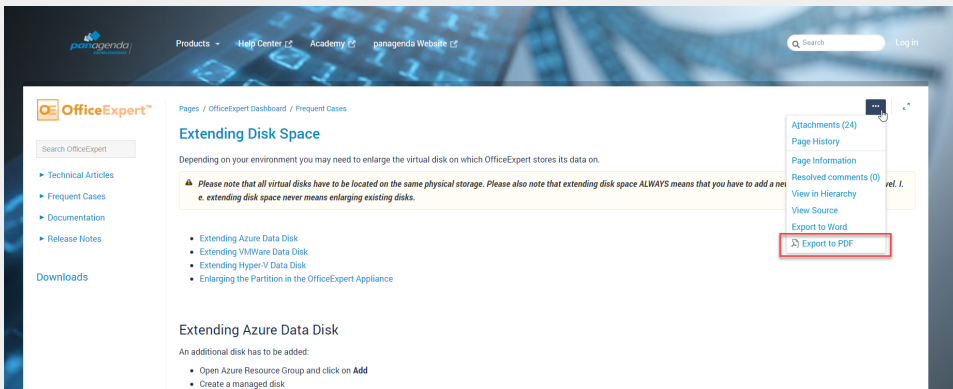
All panagenda knowledge base contents can be exported as visually appealing PDF files.

To export articles, please carry out the following steps:

1. Navigate to the page you want to page you want to export.

 Please note: There will also be an option to include all child pages of the page to the PDF export!

At the right hand top corner of the page, click on the ... **icon** and select **Export to PDF** from the context menu:



2. Select the **Default** template and the export scope:  
**This page and its children** in case you want to include all sub-pages  
**Only this page** in case you do NOT want to export all sub-pages  
Click on the **Export** button:

## Exporting PDF

Template

Default

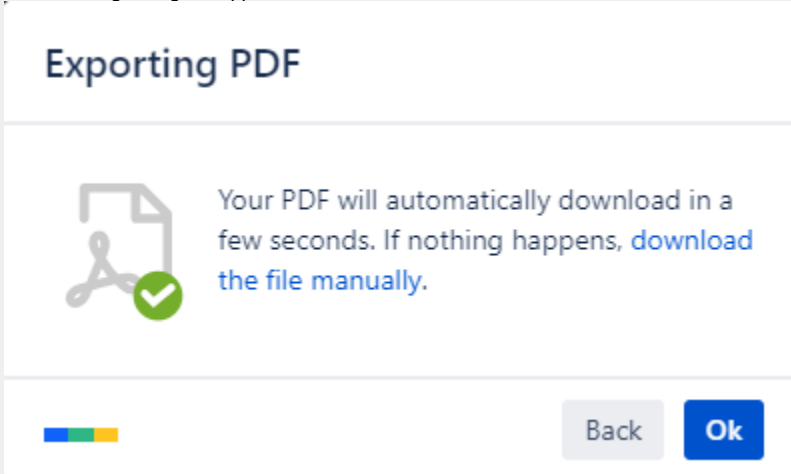
Export Scope

This page and its children  
**This page and its children**  
Only this page

Export

Close

3. The following dialog will appear:



4. You will find a document including a cover page, a table of contents, page numbers and so on (usually) in your Download folder:

