

Setup Guide



Welcome to panagenda MarvelClient! This guide will help you to set up panagenda MarvelClient. It covers installation on the Domino server and on clients for all MarvelClient (MC) editions, including the free offerings [Essentials](#) and [MC for Nomad](#).

- [About MarvelClient](#)
- [BASIC INFORMATION](#)
- [GETTING STARTED](#)
- [ADDITIONAL INFORMATION \(MC\)](#)

All panagenda knowledge base contents can be exported as PDFs (including all child pages - if desired)



If you export this page as PDF, you will obtain an optimized print version of the MarvelClient Setup Guide.

How to export contents or entire guides as PDF:

All panagenda knowledge base contents can be exported as visually appealing PDF files.

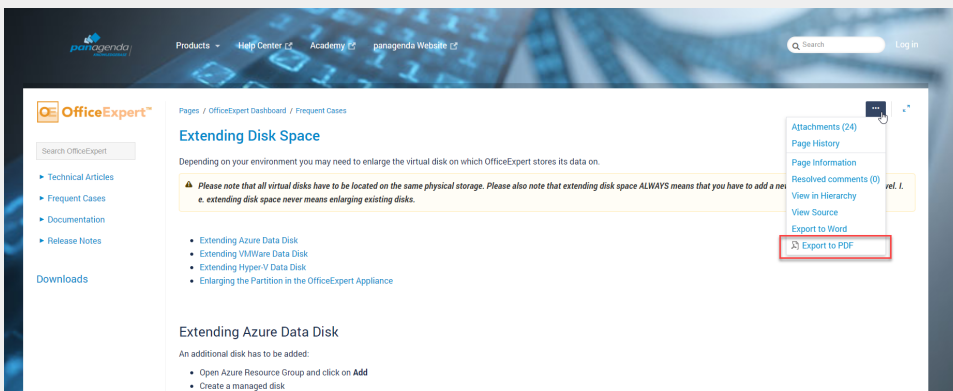
To export articles, please carry out the following steps:

1. Navigate to the page you want to page you want to export.



Please note: There will also be an option to include all child pages of the page to the PDF export!

At the right hand top corner of the page, click on the ... **icon** and select **Export to PDF** from the context menu:



2. Select the **Default** template and the export scope:
This page and its children in case you want to include all sub-pages
Only this page in case you do NOT want to export all sub-pages
Click on the **Export** button:

Exporting PDF

Template

Default

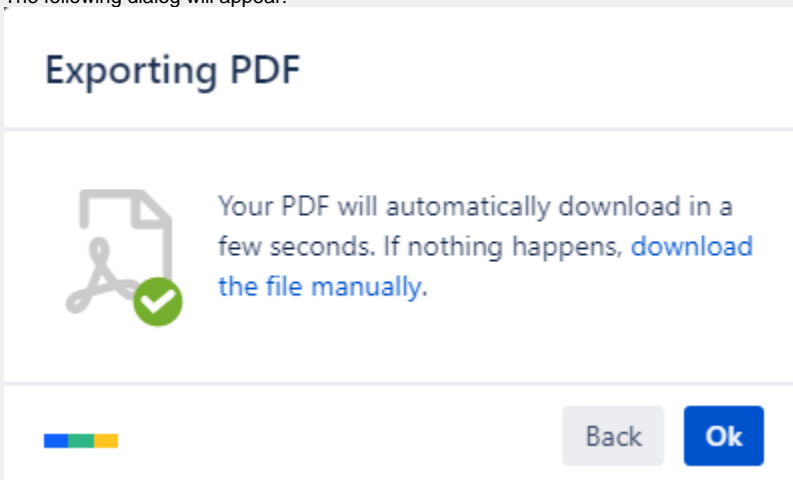
Export Scope

This page and its children
This page and its children
Only this page


Export

Close

3. The following dialog will appear:



4. You will find a document including a cover page, a table of contents, page numbers and so on (usually) in your Download folder:




Extending Disk Space OfficeExpert

panagenda Knowledge Base Export

Table of Contents

Extending Azure Data Disk	3
Extending VMware Data Disk	6
Extending Hyper-V Data Disk	8
Enlarging the Partition in the OfficeExpert Appliance	10
DISCLAIMER	17
Limitation of liability for external links	17

panagenda Knowledge Base PDF Export: 11/30/20182



Depending on your environment you may need to enlarge the virtual disk on which OfficeExpert stores its data on.

Please note that all virtual disks have to be located on the same physical storage.


Please also note that extending disk space ALWAYS means that you have to add a new disk on virtual hardware level. I. e. extending disk space never means enlarging existing disks.

- Extending Azure Data Disk
- Extending VMware Data Disk
- Extending Hyper-V Data Disk
- Enlarging the Partition in the OfficeExpert Appliance

Extending Azure Data Disk

An additional disk has to be added:

- Open Azure Resource Group and click on **Add**
- Create a managed disk
- populate all relevant fields based on your setup:



Home > Resource groups > panagenda-az > Marketplace > Managed disks > Create managed disk

Create managed disk

[Basics](#) [Tags](#) [Review](#) [+ create](#)

Select the disk type and size needed for your workload. Azure Disks are designed for 99.99% availability. Azure Managed encrypt your data at rest, by default, using Storage Service Encryption. [Learn more about disks](#)

Project details
Select the subscription to manage deployed resources and costs. Use resource groups like folders to organize and name your resources.

Subscription

Resource group

OS Deployment Type

panagenda-az

Create new

Disk details

Disk name

Region

Availability zone

Source type

Size

panagenda-bdsk

Europe West Europe

None

None

256 GB

Standard HDD

Exchange GB

Afterwards open the VM and click on **Disks > Add data disk**.