

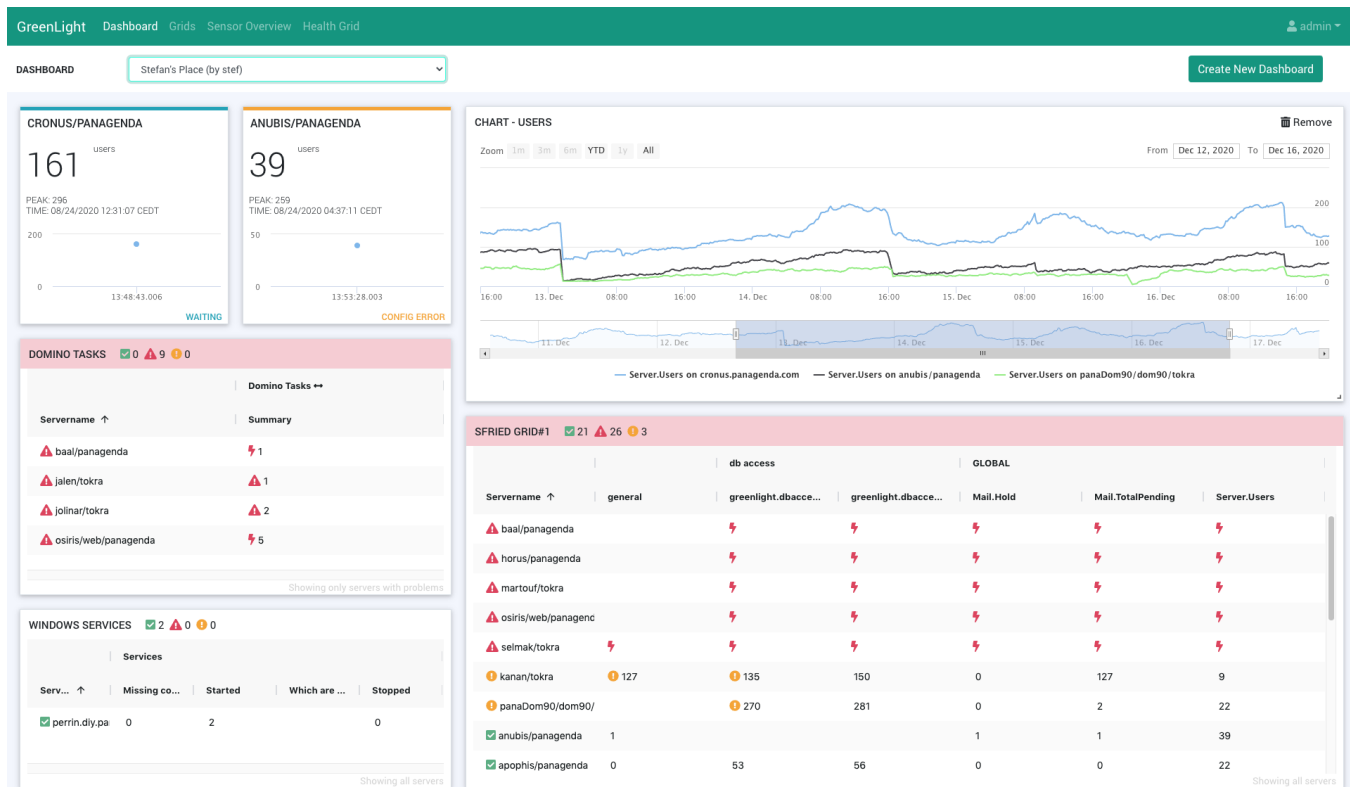
Dashboard

Dashboards enable you to customize GreenLight infrastructure monitoring to suit your individual use cases. We recommend to prepare the information in [Grids](#) before you create Dashboards.

 Please note that this page is empty before you have configured your first dashboard.

Contents:

- [Create New Dashboard](#)
 - [GRID](#)
 - [NOTIFICATIONS BAR](#)
 - [DOMINO SERVER CARD](#)
- [Customization](#)



Create New Dashboard

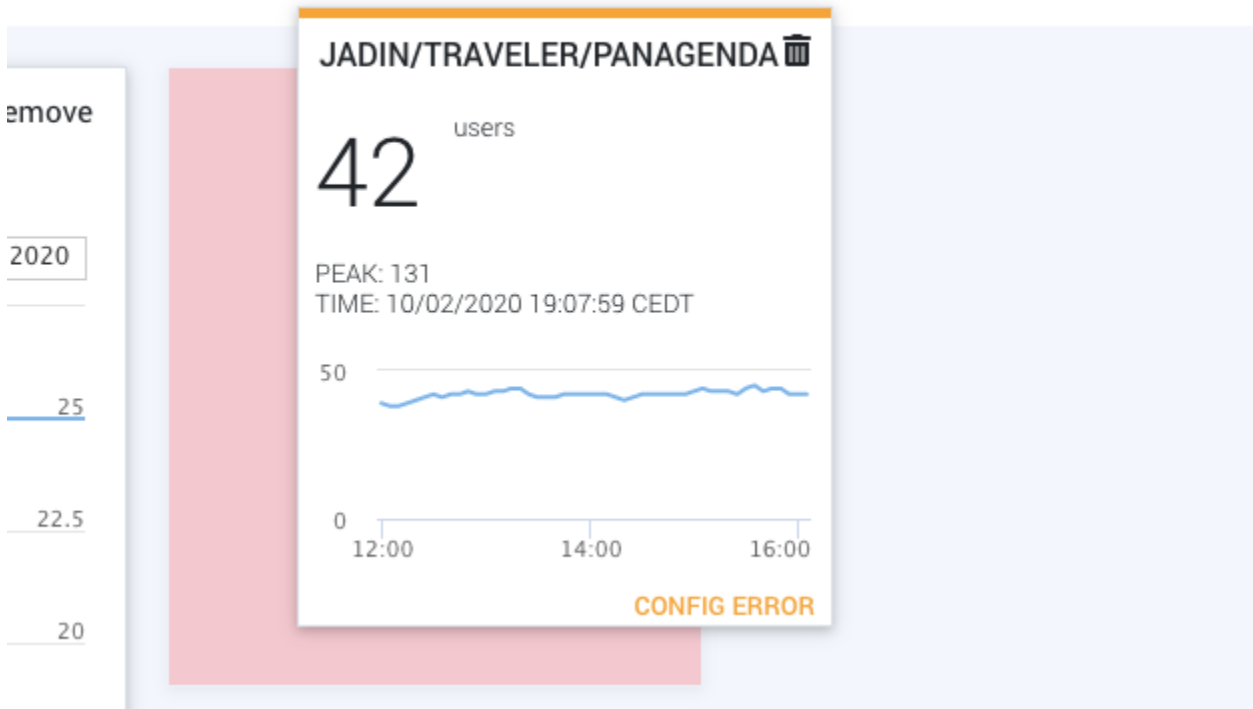
After clicking this button, a popup will appear where you can set the name of your dashboard and whether it should be available for all users (= **public enabled**) or only for you.

There are several kinds of gadgets you can add to your dashboard:

GRID

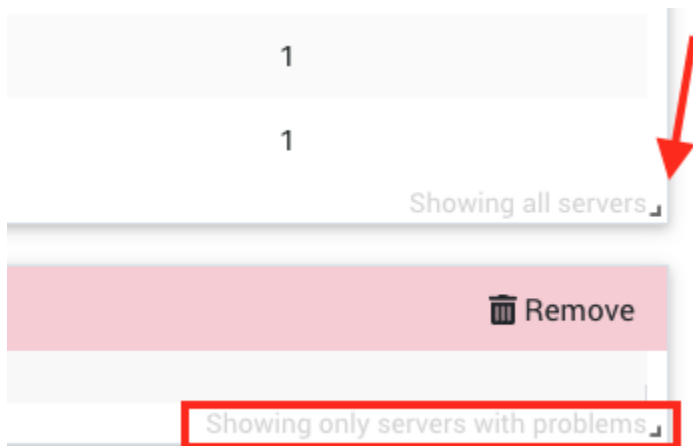
When choosing this option (from the **Add gadget** button) you will see a drop down list of your preconfigured [Grids](#). Select the one you wish to see on your dashboard and hit the **Add** button.

Based on these grids, you can create ad-hoc charts or you can create a chart and add it to the dashboard permanently. To do so right click on a measurement in the grid and select **Add to Chart...** from the context menu. An ad-hoc chart will be created which can then be added to the dashboard by clicking on the **green + icon** next to "MEASUREMENT HISTORY" in the popup header bar:



Move your mouse to the header bar of elements for repositioning.

In case you see the following icon in the bottom right edge, the size can also be adjusted:



As you can also see on these screenshots above, grids inform you whether all servers are shown or only those with problems.

Furthermore you can set dashboards as homepage by hitting the **star icon** - if one is defined it will be shown after login instead of the Health Grid.

Clicking on the **cogwheel icon** enables you to edit the name of the dashboard as well as toggling the public availability (for all users) of this dashboard.

 Do not forget to click on the **save icon** when you are done with your customization!

