

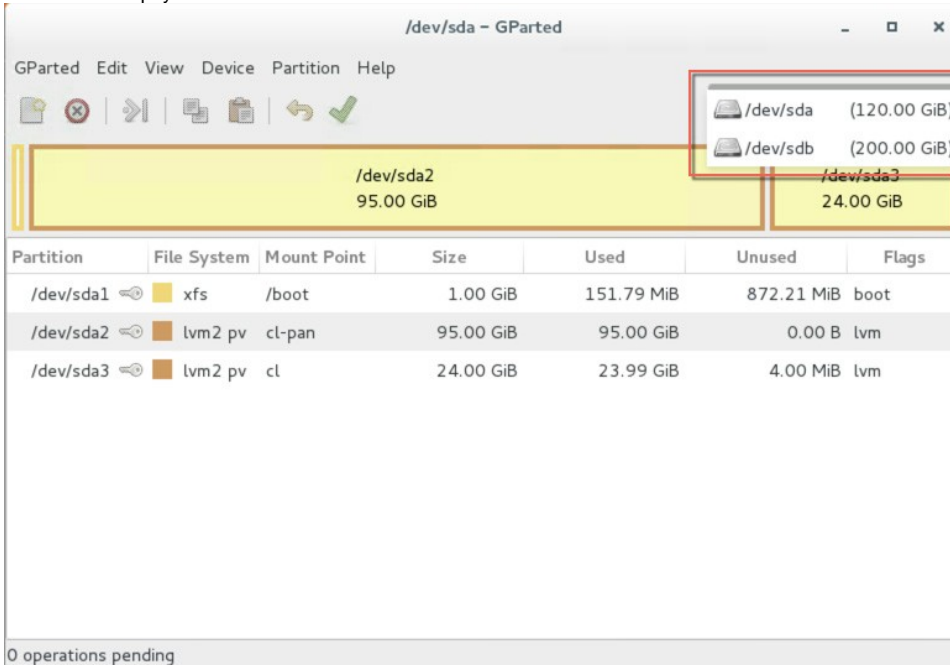
Extending GreenLight Disks (GL >v3.5)

Depending on your environment you may need to enlarge the virtual disk on which GreenLight stores its data on. Please note that all virtual disks have to be located on the same physical storage.

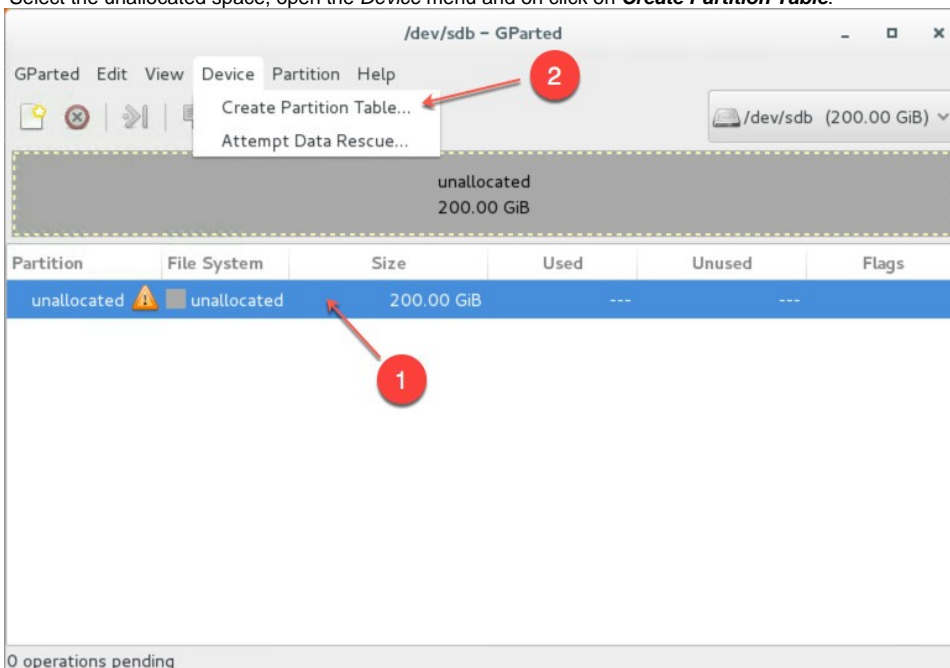
Please also note that extending disk space **ALWAYS** means that you have to add **a new additional disk** on virtual hardware level. I. e. extending disk space **never** means enlarging existing disks

In order to enlarge the partition in the GreenLight Appliance, perform the following steps:

1. The easiest way to enlarge a partition in GreenLight is to use the installed partition manager **GParted**. Please launch it using the Applications menu (you can also start GParted from the Terminal with "sudo gparted"):
2. Select the new physical disk:



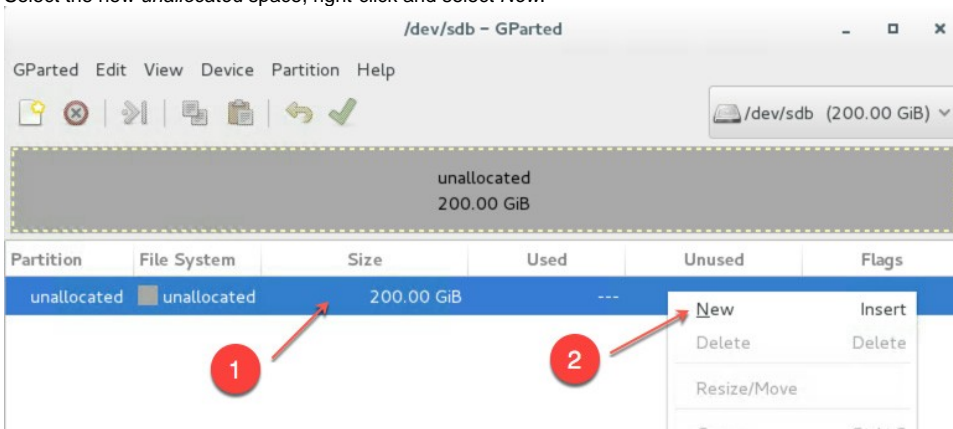
3. Select the unallocated space, open the *Device* menu and on click on **Create Partition Table**:



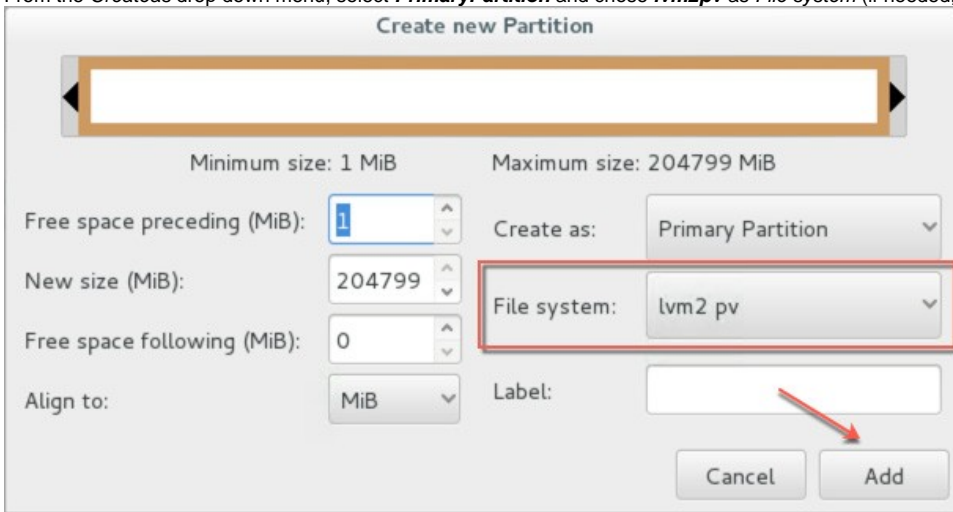
4. Click on *Apply* in the warning:



5. Select the new *unallocated* space, right-click and select *New*:



6. From the *Create as* drop down menu, select **Primary Partition** and chose **lvm2 pv** as *File system* (if needed, a *Label* can be defined):

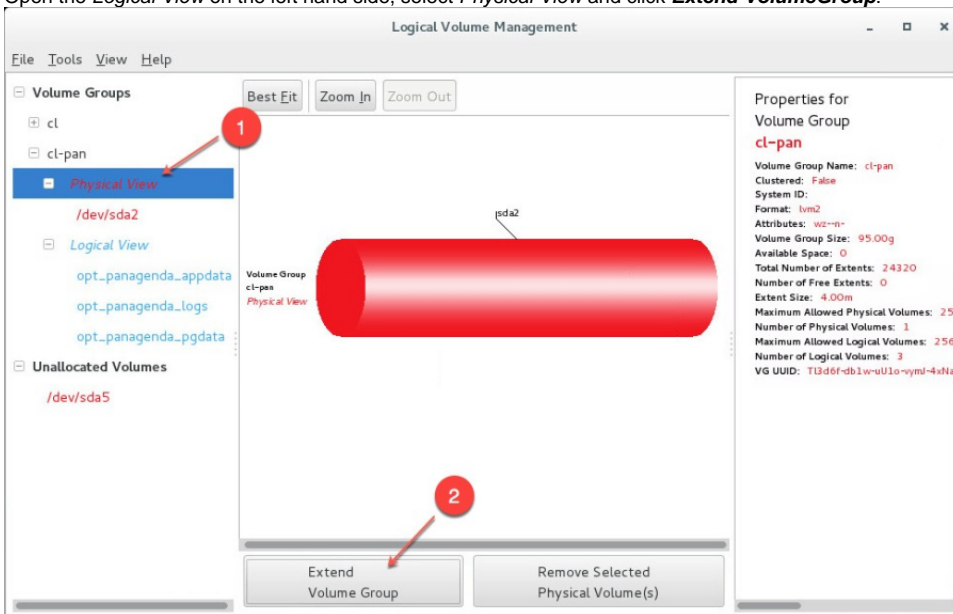


7. Save your changes by clicking the **apply** button - also on the popup message

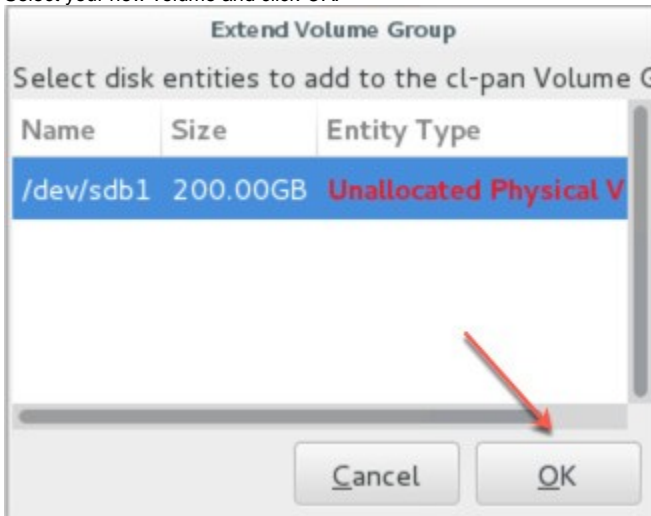


8. Start the **LogicalVolumesManager** from the Applications menu

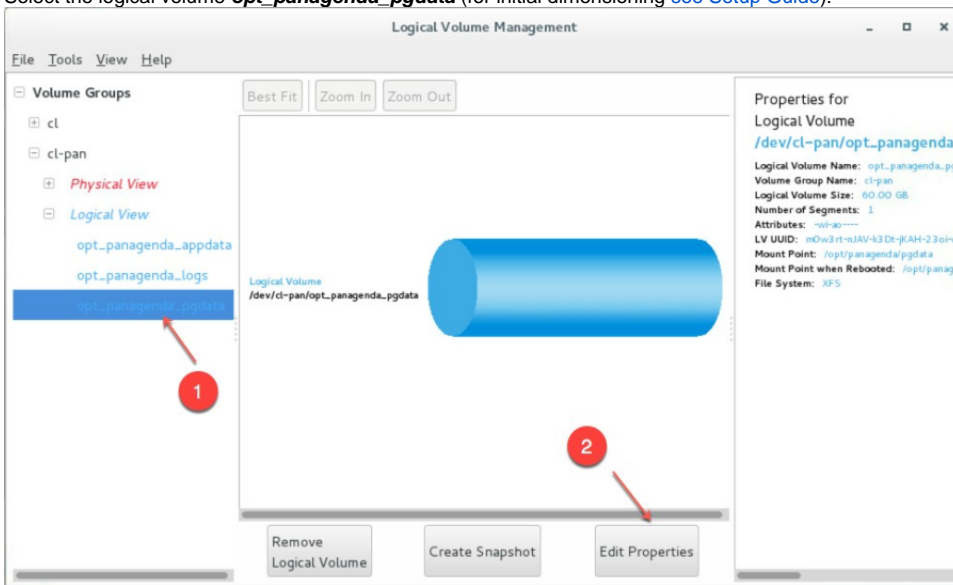
9. Open the *Logical View* on the left hand side, select *Physical View* and click **Extend VolumeGroup**:



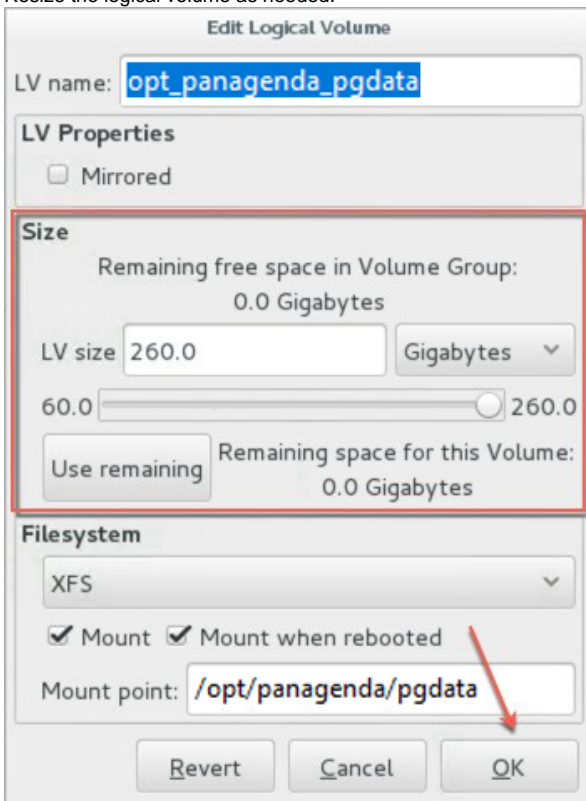
10. Select your new volume and click OK:



11. Select the logical volume **opt_panagenda_pgdata** (for initial dimensioning [see Setup Guide](#)):



12. Resize the logical volume as needed:



13. Please restart the Appliance



Tip: You can repeat this enlargement whenever you need more space.