

Setup Guide - TrueDEM



Welcome to panagenda TrueDEM! This guide will help you to get started.

- [Getting Started with TrueDEM](#)
- [TrueDEM Portal - Access](#)
- [Insider Channel Setup](#)
- [TrueDEM Manager](#)
- [Endpoint Manager Deployment \(Intune\)](#)
- [Enabling Customer Subnet Data \(optional\)](#)
- [AppLocker - Allow Rule](#)
- [TrueDEM App Roles](#)
- [Remove TrueDEM components in an Organization](#)

All panagenda knowledge base contents can be exported as PDFs (including all child pages - see instructions further below).

i If you export this page as PDF, you will obtain an optimized print version of the TrueDEM Setup Guide.

How to export contents or entire guides as PDF:

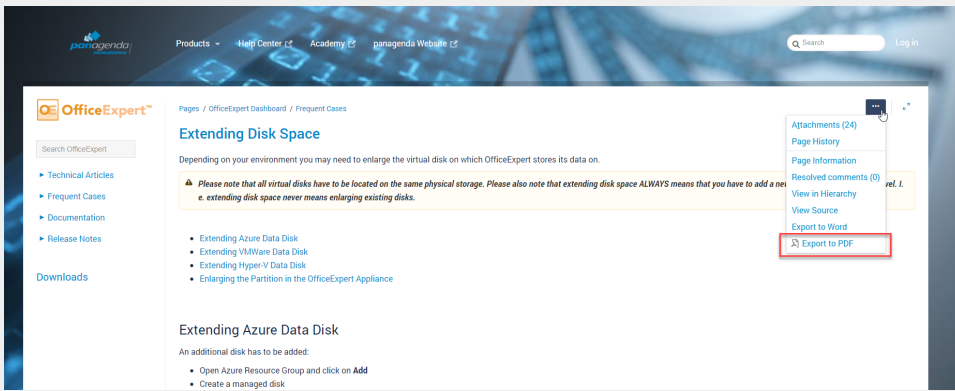
All panagenda knowledge base contents can be exported as visually appealing PDF files.

To export articles, please carry out the following steps:

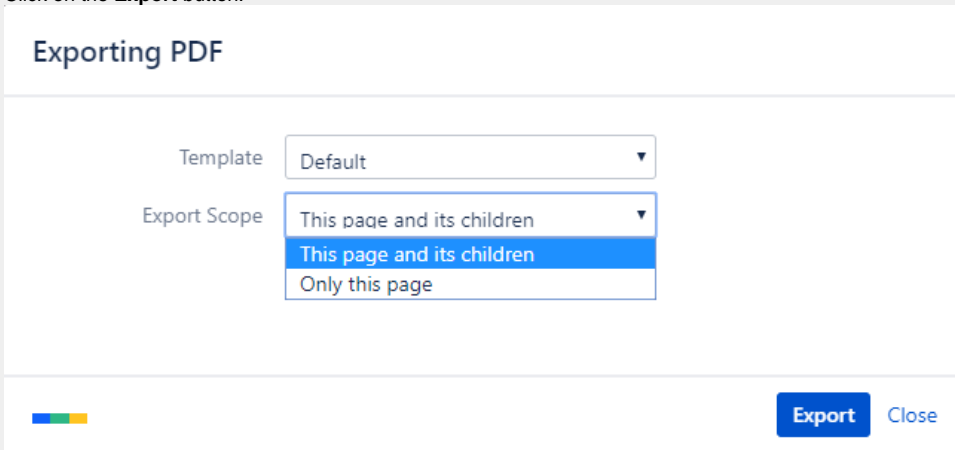
1. Navigate to the page you want to page you want to export.

i Please note: There will also be an option to include all child pages of the page to the PDF export!

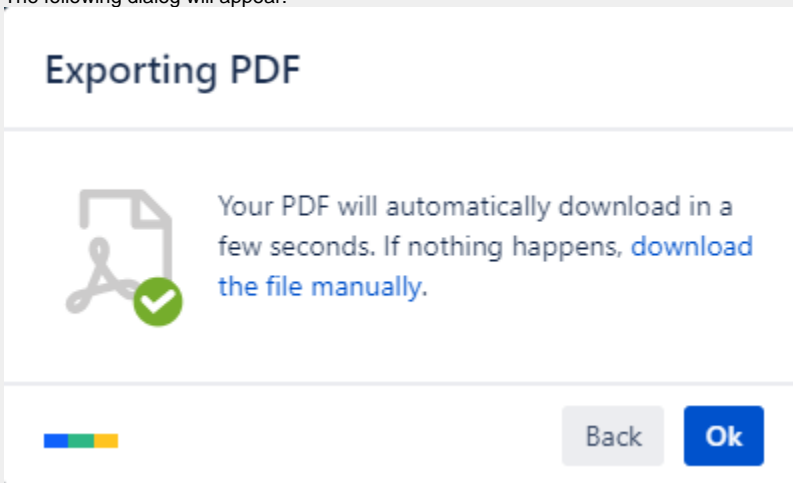
At the right hand top corner of the page, click on the ... **icon** and select **Export to PDF** from the context menu:



2. Select the **Default** template and the export scope: **This page and its children** in case you want to include all sub-pages **Only this page** in case you do NOT want to export all sub-pages
Click on the **Export** button:



3. The following dialog will appear:



4. You will find a document including a cover page, a table of contents, page numbers and so on (usually) in your Download folder:

The image shows a PDF document with a blue header and footer. The header contains the panagenda logo and the title 'Extending Disk Space OfficeExpert'. The footer contains 'panagenda Knowledge Base Export'. The main content area is divided into two pages. The first page (page 3) contains a table of contents and a section titled 'Extending Azure Data Disk'. The second page (page 4) contains a section titled 'Create managed disk' with a form for configuring disk details.

Table of Contents

- Extending Azure Data Disk 3
- Extending VMWare Data Disk 6
- Extending Hyper-V Data Disk 8
- Enlarging the Partition in the OfficeExpert Appliance 10
- DISCLAIMER 17
- Limitation of liability for external links 17

Extending Azure Data Disk

Depending on your environment you may need to enlarge the virtual disk on which OfficeExpert stores its data on.

Please note that all virtual disks have to be located on the same physical storage. Please also note that extending disk space ALWAYS means that you have to add a new disk on virtual hardware level. I. e. extending disk space never means enlarging existing disks.

- Extending Azure Data Disk
- Extending VMWare Data Disk
- Extending Hyper-V Data Disk
- Enlarging the Partition in the OfficeExpert Appliance

Create managed disk

OS Deployment Tests

Subscription: [dropdown]

Resource group: panagenda

Disk details

Disk name: panagenda

Region: Europe West Europe

Availability zone: None

Source type: None

Size: 256 GB

Standard HDD

Storage IOPS

Afterwards open the VM and click on Disks > Add data disk.