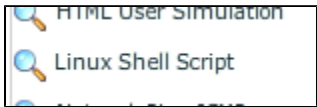


# Release Notes v2.9.6

## New Features

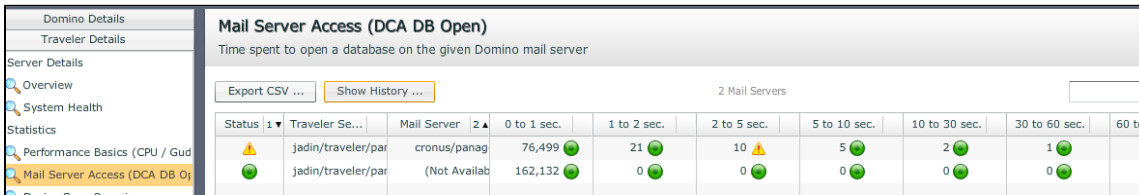
### General

- Linux Shell Script Sensor: A new Sensor has been added that can be used to trigger individual self-created Linux Shell Scripts (.SH). With this Sensor you can cover dozens/hundreds of use cases (example: perform a LDAP query and measure the total time for this query as well if the object has been found or not)

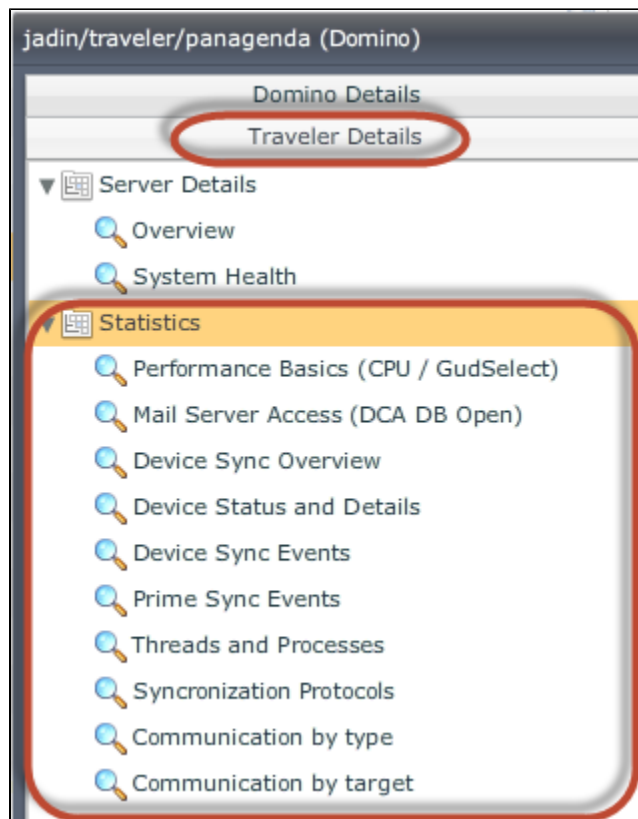


This Sensor allows you to make use of Nagios Scripts (more information will be shared in our knowledge base in the near future!)

- Traveler - Mail Server Histogram Matrix  
Show History functionality allows you to see the history events of each of the DCA DB Open Histogram Data.  
This Matrix is already aware of the new DCA statistic names which got changed with the FixPack 8 of Traveler 9.0.1



- Improved Traveler Details on Node Level  
Traveler Details: The Traveler Details Panel provides now more Information concerning specific Histogram Data (e.g DCA.DB\_OPEN, GUD Select,...)  
In addition to that you can now Export Traveler related User Data



- **DB Access Sensor:** You can now monitor in more detail the mail.box(s) (or other domino applications which are using the mail.box design). Multiple new statistics are now available which can be further used for alerting and charting. It provides for instance vital information of the oldest document in the mail.box (categorized by pending/hold/dead). In addition to that the DB Access Sensor offers now database size information, document count information too.

Access Type	All mail.box databases on server
	Single database (detailed inspection)
	List of databases (superficial check)
	All mail.box databases on server
	List of databases in mail.box design

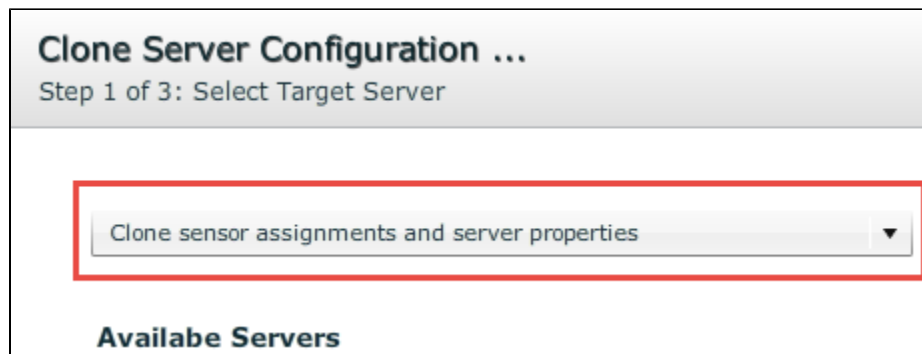
  

★	greenlight.dbaccess.mailbox.docage.oldest.dead	0
★	greenlight.dbaccess.mailbox.docage.oldest.hold	11.280
★	greenlight.dbaccess.mailbox.docage.oldest.overall	11.280
★	greenlight.dbaccess.mailbox.docage.oldest.wait	11.280

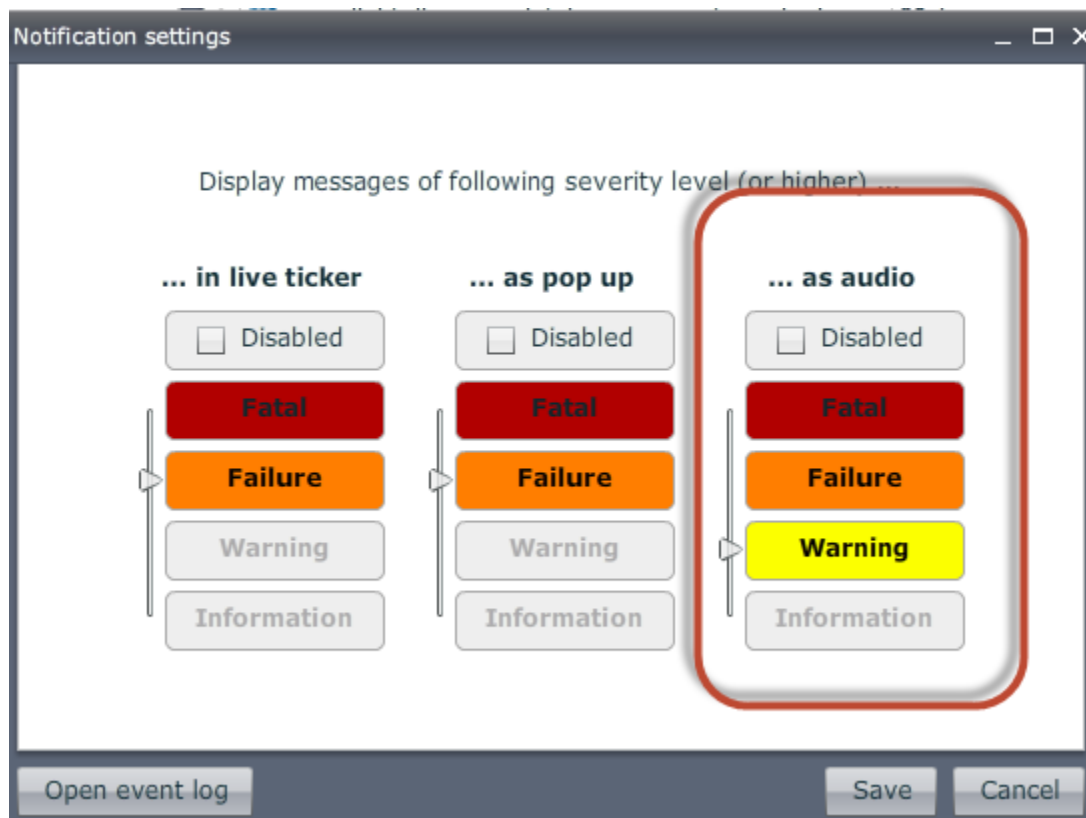
- **Clone Server Properties** in Clone Server Config  
During "Clone Server Configuration" you can now decide if server properties should be inherited too. There are 3 options available

- Clone sensor assignments only, do not overwrite server properties
- Clone sensor assignments and server properties
- Clone sensor properties only, do not add sensor assignments

e.g.

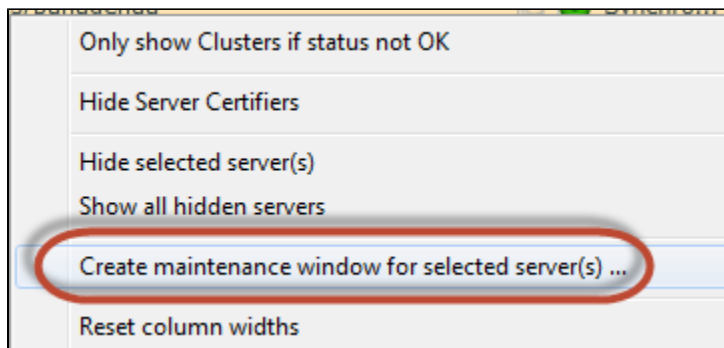


- *Sound Notification:* You can now activate Audio notifications on the Live Monitor Level



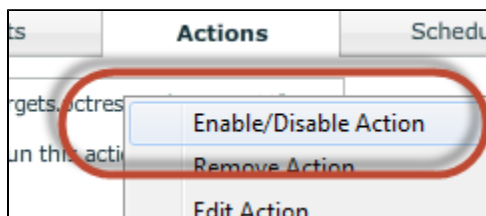
## Live Monitor

- *Server Maintenance:* A new way to set quickly a maintenance period via the Live Monitor has been added. (via the right-click context menu on the Live Monitor)

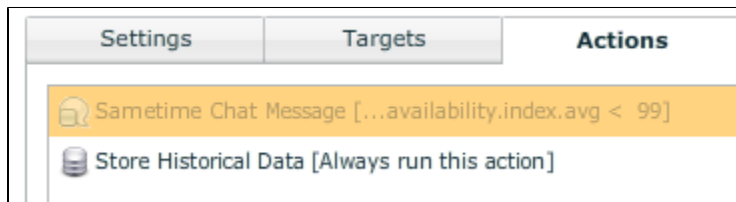


## Alerting

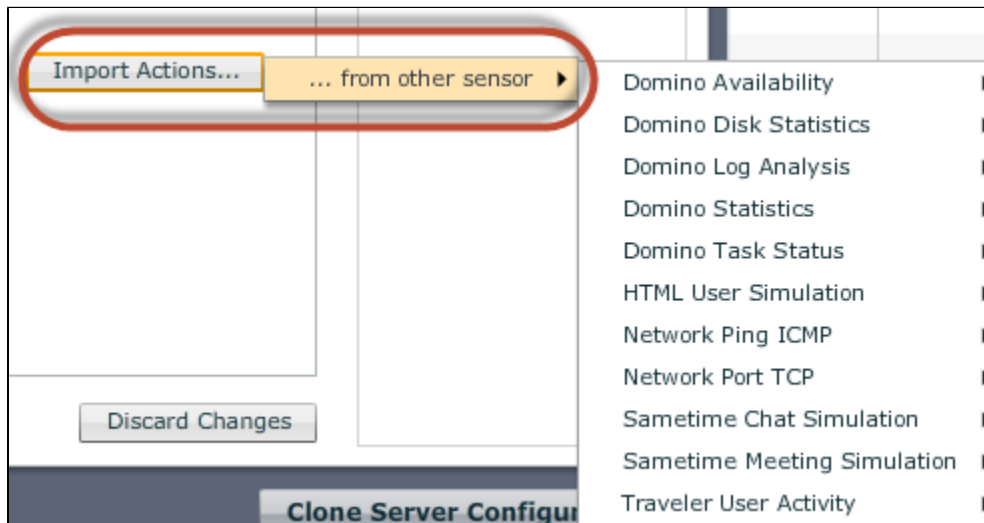
- *Deactivate Actions:* A new setting has been added which allows you to enable/disable existing actions. (via the right-click context menu)



Disabled actions are "greyed out" and can be re-enabled easily



- *Import Actions:* One can now import existing actions into other Sensors by using the *Import Actions* button



## Backend Configuration

- *PostgreSQL maintenance adjustments:* Several Scripts have been added to improve the maintenance tasks on the PostgreSQL Database Level

## Improvements

### General

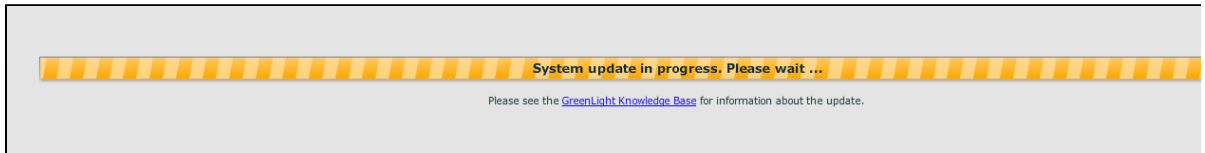
- *Config Integrity*: A maintenance check will verify sensor configuration at first run of the new version
- Improved "Separator Detection"  
In case the separator config on Node Level differs with the real separator on Domino Level, the following mail message will be sent to the Admin

Detected separators:

```
{com.panagenda.greenlight.plugin.domino.GROUPING_CHAR_DETECTED=,, com.panagenda.greenlight.plugin.domino.DECIMAL_CHAR_DETECTED=,}
```

Admin has to correct the node settings (e.g. Reset to automatic detection)

- *User Accounts*: Allow special characters for GreenLight Login passwords
- *Maintenance Periods*: Redesign for calculating maintenance periods
- *Health Grid*: Hide sensor refresh button in Health Grid if no sensors to refresh are available
- *Manual Sensor Execution*: Sort List of Sensors
- *Heartbeat script* (GL Backend) will also now be triggered if a daemon check detects an unavailability of tomcat and postgres
- *Daily Maintenance Task* purges old Config dumps ( /opt/panagenda/dbkbp ) which are older than 30 days
- Added new predefined action conditions to several Sensors (e.g. Traveler User Activity Sensor, ...)
- *Domino ServerUptime* is now calculated to seconds based on the Server.ElapsedTime Statistics --> greenlight.elapsedtime.seconds
- *Update Process*: System Update Progress Bar Information has been added (manual / automatic Update) --> visible in future upgrades



- *Sametime Statistics*: Added a functionality in which Meeting Statistics can be retrieved from a Websphere Meeting Server



Measurement Details		Statistics
List View		Favorites Only <input type="checkbox"/>
★	Key	Value
★	statistics.activeRoomCount	1
★	statistics.activeRoomCount.local	1
★	statistics.activeUserCount	1
★	statistics.activeUserCount.local	1
★	statistics.dormantRoomCount	4
★	statistics.libraryCount	1
★	statistics.librarySize	23,247,649
★	statistics.roomCount	6
★	statistics.topRoom 1 activeUserCount	1

## Reporting

- *DAOS Details*: Column Titles and Details for the DAOS Details Report have been adjusted in order to reflect the Units (MB; amount of objects)

## Charting

- *Line Chart*: If an axis is hidden, do not consider it when "set largest axis as maximum"

## Monitoring

- *Tasks Status Sensor*: Consecutive fire count behavior has been adapted (based on measurement result)
- *Tasks Status Sensor*: The task name "Traveler" has been added to the Task list due to Traveler Code modifications (starting with Traveler version 9.0.4 IBM changed the name from Lotus Traveler to Traveler)
- *Tasks Status Sensor*: Information Box is now available
- *HTML User Simulation*: Supports now Form, Basic and No Authentication
- *Disk Statistic Sensor*: One can set now different warning/failure threshold based on partition sizes.

Settings				Targets	Actions	Schedule
Basic Settings						
Advanced Settings						
Size		Warning threshold		Failure threshold		
1 GB -	20 GB	< 10 GB	▼	< 2 GB	▼	- +
20 GB -	100 GB	< 25 GB	▼	< 5 GB	▼	- +
100 GB -	600 GB	< 5 %	▼	< 3 %	▼	- +

- *Traveler User Activity Sensor*: Device - User - Sync Status information has been added to this Sensor. You can filter the list based on sync status, username, OS or Hardware and in addition to that you can export the output to a CSV file.

Measurement Details

Devices

Statistics

Export CSV ...

34 Devices

Last Sync	Last Sync Time	Device ID	User	2 ▲	OS
over 48 hours ago	Thu, 02. Jul 2015 00:02	IBM_IOS_777A5FB079CD40C	de		Apple iOS 8.4
over 48 hours ago	Wed, 01. Jul 2015 01:26	IBM_IOS_BD6B5E074D8D4C	de		Apple iOS 8.4
over 48 hours ago	Thu, 02. Jul 2015 13:54	IBM_IOS_C10C26292A1A471	fl		Apple iOS 8.3
over 48 hours ago	Thu, 18. Jun 2015 18:25	IBM_IOS_EF5A3FDF006043A	fr		Apple iOS 8.3

- *Traveler User Activity Sensor*: Added a new statistic to provide the total amount of users per IBM Traveler Pool
- *Traveler User Activity Sensor*: Timeout Setting for accessing the Traveler Server can now be set
- *Mailflow Sensor*: Avoids background Fulltext Creation

FTSearch only when the DB is indexed otherwise a simple search will be performed.

Note: in the latter case, the mail body will not be searched --> make sure the mail subject is preserved!

## Bug Fixes

### General

- fixed an issue where sending a test mail (Mail Profile for Maintenance Messages) in certain situation failed
- fixed an issue where incorrect maintenance settings/ business hours settings within *Server Settings* led to a strange Login behaviour
- fixed an issue where the Sensor status was not reflected correctly in the GreenLight Frontend

- Traveler Statistics: Filter out Device Types from DeviceSyncState Histogram View (IBM added additional DeviceSync Stats to Traveler: e.g. Traveler.DeviceSync.Count.android )
- *Unattended Viewer Mode*: fixed an issue where the Login crashed if the unattended viewer interval was set to 0
- PDF and CSV Export crashed if invalid character was in the filename
- fixed an issue with the GL DiskUsage notification
- fixed an issue with the Discovery process
- fixed an issue where a post-modification of a Cluster definition (Cluster members) was not saved
- fixed an handshake issue in which a traveler server accepted only TLS 1.x

## Monitoring

- Task Status Sensor: fixed an issue where in certain situations a Task Sensor action was not triggered.
- DB Access Sensor: fixed an issue where settings have not been saved correctly if you have changed the sensor settings from "List of Database (superficial check)" to "Single Database (detailed inspection)"

## Actions

- SNMP Action: GreenLight placeholders can now be used within a SNMP action
- SNMP Action: Eventlog captures now SNMP action output
- SNMP Action: fixed an issue in the Task Sensor
- Action - Advanced Options: In certain situations the GreenLight Frontend displayed incorrect checkbox selections
- fixed an issue with the Document.Count

## Reporting

- fixed an issue where the *Generate Report Button* was visible although the Report was set based on Schedule
- *DAOS Report*: Header Information has been updated

## Server Settings

- fixed an issue where the first entry of the Location list could not be selected

## Health Grid / Health Monitor

- fixed an issue where the *Health Monitor* settings for a normal user were not saved
- fixed an issue where "create Maintenance Window on selected Server" was not working on the Sensor Overview